

CombiCard 1000-3000



The design of this enclosure system makes use of the modular construction principle. This gives the user almost infinite variability for the optimal integration of his individual electronic components.

Thanks to the different insertable system parts, CombiCard can be used as a **desktop, wall or control panel mounting enclosure**. Individually mountable hinges mean that separate system parts can be swivelled as required.

The wide range of different front panel elements allows you to design the visible and operating areas to satisfy your individual requirements.

A comprehensive programme of accessories completes this system.

The interior assemblies which are available as accessories permit use as a 19" enclosure.



Enclosure material: ABS, polycarbonate (only FD...G).
For technical data see pages 646-650.

Ingress protection: Up to IP 65 / DIN EN 60529, depending on combined system parts.

Colour: Base parts light grey, similar to RAL 7035; front lid in G-version, crystal-clear; front and rear parts graphite grey, similar to RAL 7024. Special colours and minimum order quantities on request.

Accessories (additional charge):

- FP...AA: Extern. aluminium front panel
- FP...AI: Intern. aluminium front panel
- FA...I: Internal mounting plate for base parts in combination with a front element
- FA...: Aluminium front panel for base parts
- MR...: Mounting plate for rear wall lid
- MR...K: Mounting plate for rear wall lid with terminal compartment
- AB 1230: Feet
- HS...: Handle
- WR...: Wall frame
- Z 1230: Cylinder lock
- RS 1230: Knurled screws
- SC G-K: Terminal compartment lid hinge
- IB...: 19" internal design for plug-in connectors acc. to DIN EN 60603 with blind front panels
- IB...PI: BUS PCB
- IB...F: Front module rails
- IL...: 19" internal design for plug-in connectors acc. to DIN EN 60603-2 when using a front lid
- IL...PI: BUS PCB
- GS...: Tapped strips / card guide / card securing device

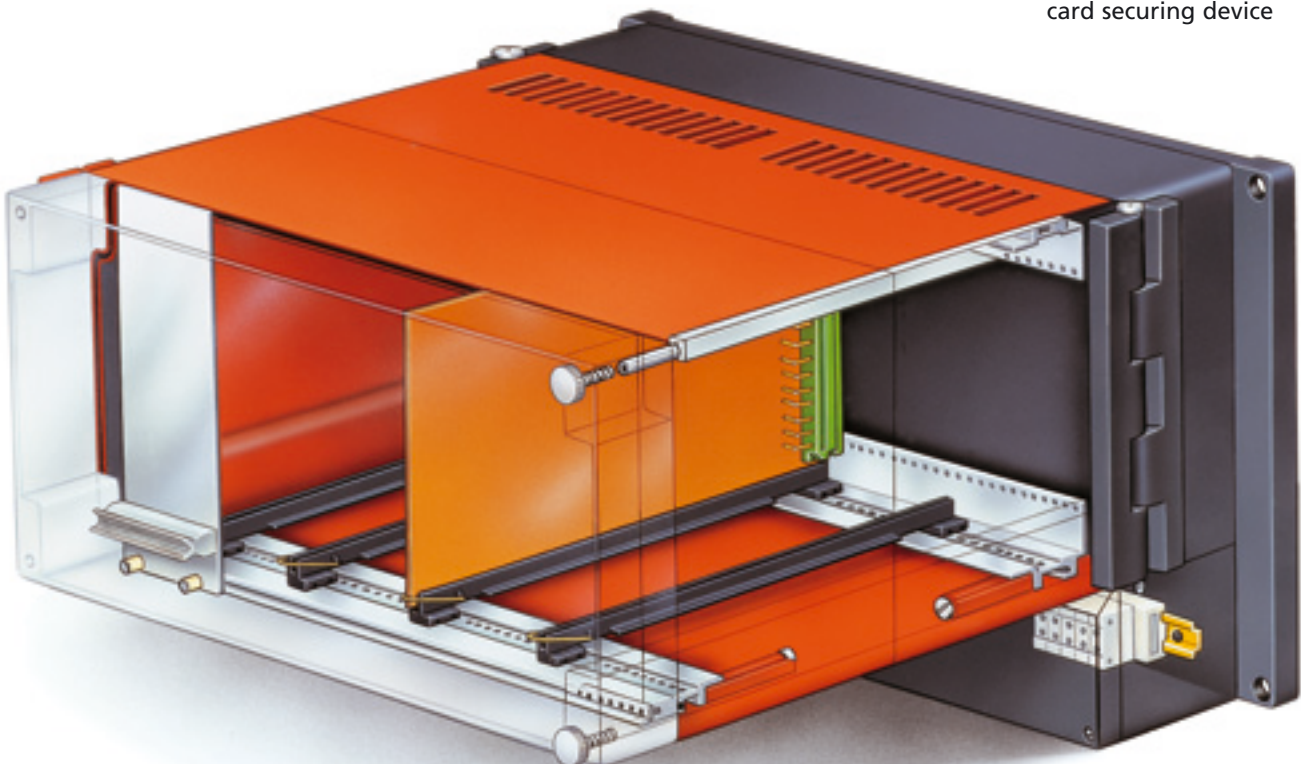
Enclosures

Model	Front length	Front height	Depth
1000	134 (144)	138 (144)	corresponding to the combined system parts
2000	184 (192)	138 (144)	
3000	281 (288)	138 (144)	

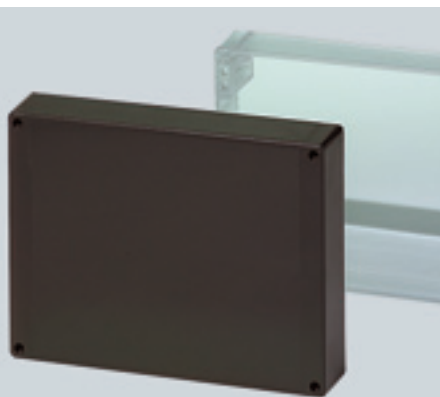
() = Control panel mounting version

Please take the following into account when selecting system parts:

- All front, base and rear parts in a basic size can be combined with each other.
- The different enclosure parts can be hinged to each other (see page 238).
- Front and rear parts can also be mounted direct – **without base part.**
- Special tie bar sets (see page 239) are required to assemble the selected enclosure configuration.
- We recommend that processing and assembly of the system parts is carried out in our factory. **We will be happy to help you to design an enclosure which satisfies your exact requirements.**



CombiCard 1000-3000 system components/front parts



Front lids act as a cover or to close bases.
IP 65 protection



The wraparound collar protects fitted switches or displays against mechanical damage.
IP 65 protection



To accommodate aluminium front panels. Also fitted with wraparound protective collar for operating elements. For details of protection category, see accessories.

Front lids

Order designation

Model	Order no.	Model	Order no.
FD 1000	19002700	FD 1000 G	19003000
FD 2000	19002800	FD 2000 G	19003100
FD 3000	19002900	FD 3000 G	19003200

G = clear

Scope of delivery:

Front lid,
screws

Accessories (additional charge):

Hinges, lock, knurled screws
see pages 238, 243

Table of dimensions

Model	L	L1	L6
FD 1000	133.40	96.50	119.80
FD 2000	184.20	147.30	170.60
FD 3000	280.72	243.82	267.12

Front frames, closed

Order designation

Model	Order no.
FR 1000	19002400
FR 2000	19002500
FR 3000	19002600

Scope of delivery:

Front frame, closed,
screws

Accessories (additional charge):

For hinges see page 238

Table of dimensions

Model	L	L5	L6	L7
FR 1000	133.40	79.2	119.80	115.20
FR 2000	184.20	130.0	170.60	166.00
FR 3000	280.72	200.0	267.12	262.52

Front frames, open

Order designation

Model	Order no.	Accessories (additional charge)			
		Front panel AI	Order no.	Front panel AA	Order no.
FO 1000	19002100	FP 1000 AI	39100000	FP 1000 AA	39103000
FO 2000	19002200	FP 2000 AI	39101000	FP 2000 AA	39104000
FO 3000	19002300	FP 3000 AI	39102000	FP 3000 AA	39105000

Scope of delivery:

Front frame, open, screws,
fixing material and seal for FP...AI

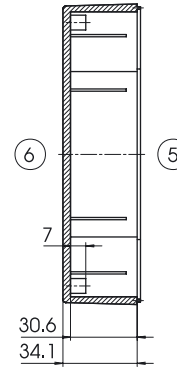
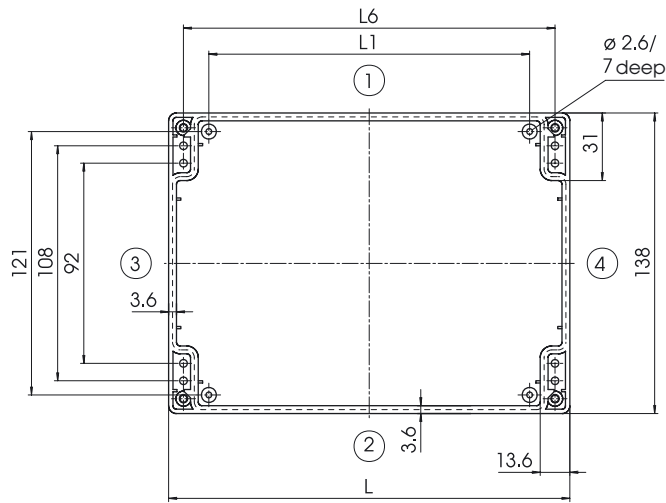
Accessories (additional charge):

For hinges see page 238
FP...AI inner aluminium panel (IP 65)
see page 240
FP...AA outer aluminium panel (IP 40)
see page 240

Table of dimensions

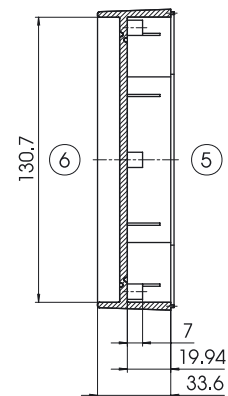
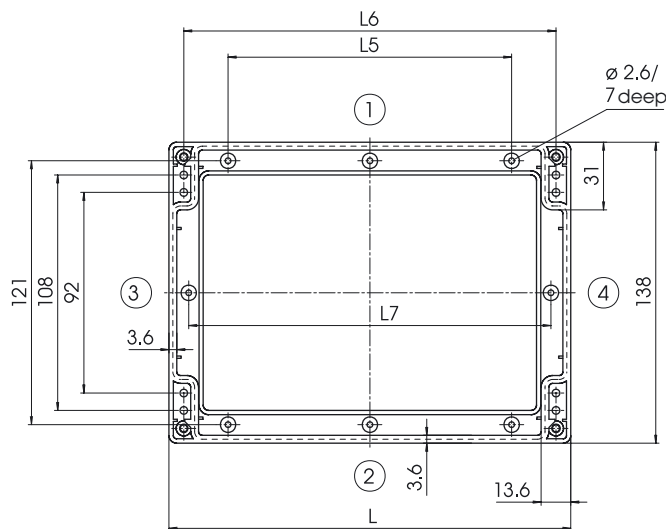
Model	L	L5	L6	L7
FO 1000	133.40	79.2	119.80	115.20
FO 2000	184.20	130.0	170.60	166.00
FO 3000	280.72	200.0	267.12	262.52

FD 1000 - FD 3000



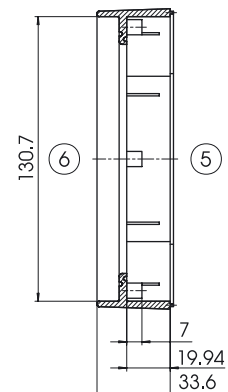
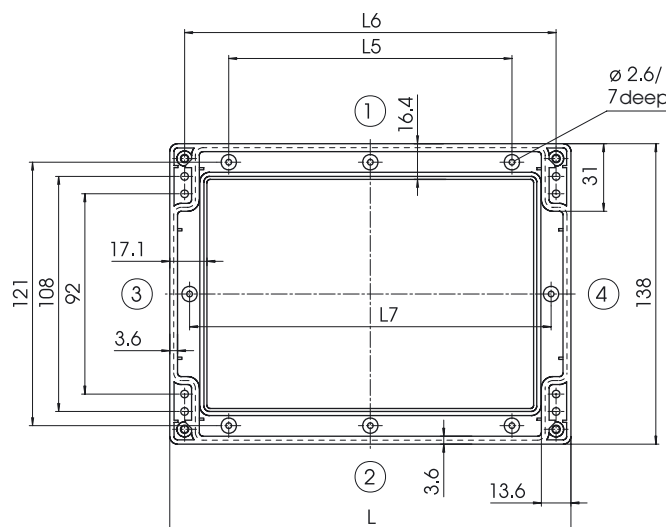
Z-2101354

FR 1000 - FR 3000



Z-2101353

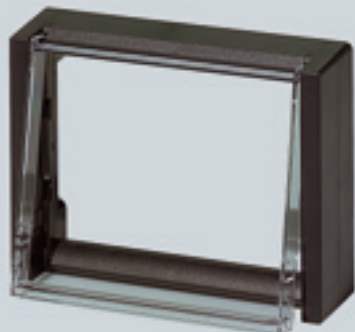
FO 1000 - FO 3000



Z-2101352



CombiCard 1000-3000 system components/front parts



The wraparound collar protects fitted switches or displays against mechanical damage. The enclosure screws are covered by latching side parts.
IP 65 protection for connection module
IP 20 for protective door



This front panel can be placed directly on base parts as a closing element in place of a front lid or frame. It can accommodate displays and push-buttons and **cannot** be used in combination with 19" internal assemblies.
IP 40 protection

Front frames, open, with protective door

Order designation		Accessories (additional charge)	
Model	Order no.	Front panel	Order no.
FCT 1000 FP	19005700	FP 1000 AI	39100000
FCT 2000 FP	19006100	FP 2000 AI	39101000
FCT 3000 FP	19006500	FP 3000 AI	39102000

Scope of delivery:
Front frame, open, with snap-on protective door, screws, fixing material and seal for FP...AI

Accessories (additional charge):
FP...AI front panel, internal (IP 65), see page 240,
SHLO-101 cylinder catch, see below

Model	Order no.
SHLO-101	21008300

Scope of delivery: 1 lock

2 cylinder catches are needed for secure locking.

Table of dimensions

Model	L	L5	L7
FCT 1000 FP	133.40	79.2	115.20
FCT 2000 FP	184.20	130.0	166.00
FCT 3000 FP	280.72	200.0	262.52

Front panels

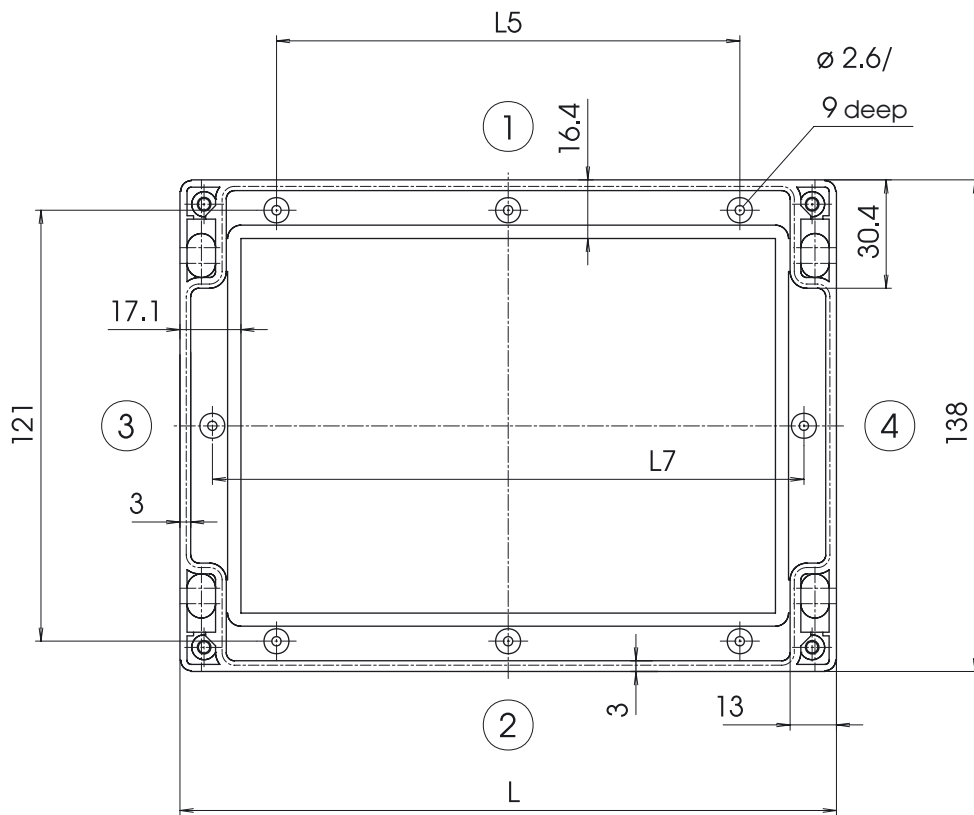
Order designation

Model	Order no.
FA 1000	39106000
FA 2000	39107000
FA 3000	39108000

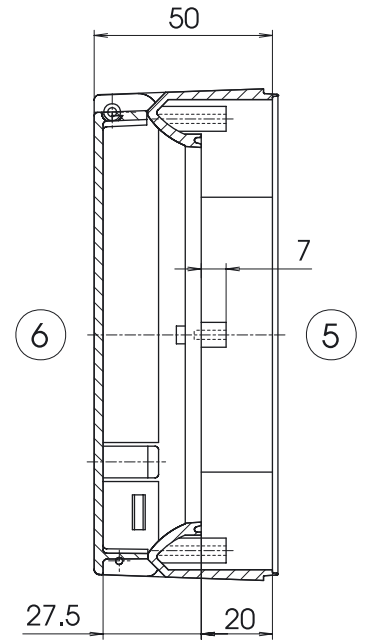
Scope of delivery:
Front panel, anodised aluminium, screws

Table of dimensions

Model	L10
FA 1000	131.00
FA 2000	181.80
FA 3000	278.32

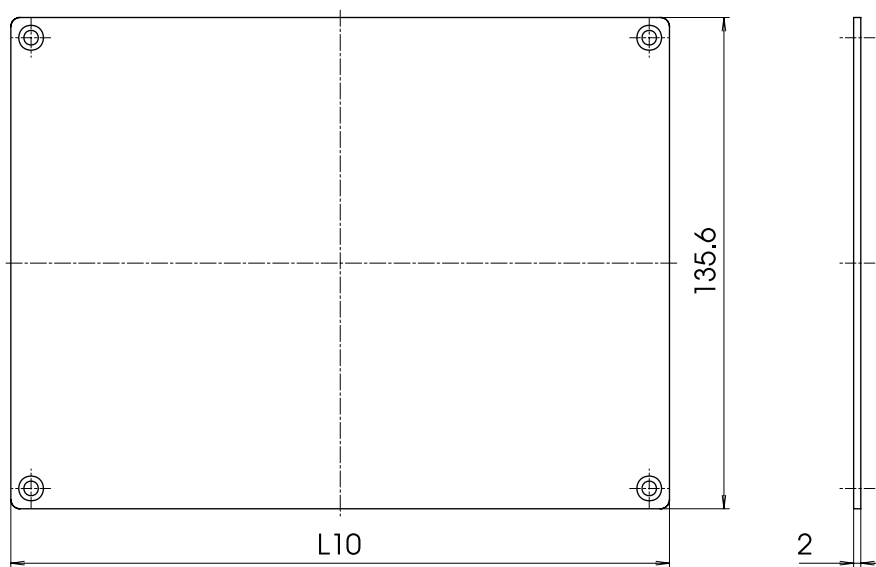


FCT 1000 FP - FCT 3000 FP



Z-2101152

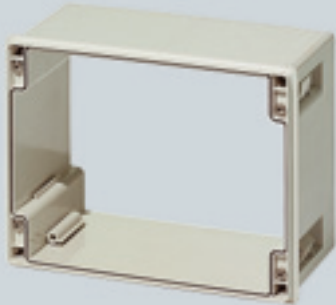
FA 1000 - FA 3000



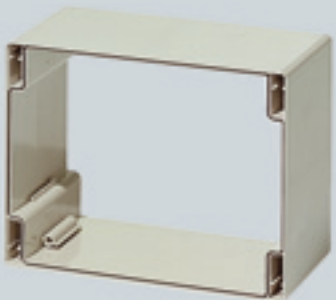
Z-2101360



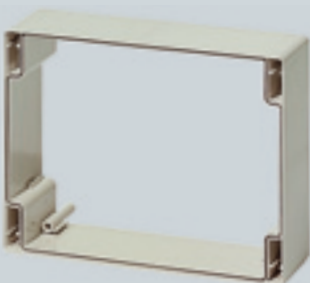
CombiCard 1000-3000 system components/base parts



Base enclosure for control panel mounting acc. to DIN IEC 61554 with moulded-on installation frame without air vents. No additional retaining clasps are required with this system, as the fixing kit is built-in.
*IP 65 protection



Individual base part which can be combined with other enclosure units as well as front and rear elements.
Ingress protection – see on right.



Low base part, e.g. for accommodating lowered 19" internal constructions acc. to following description on page 246, paragraph 2.
IP 65 protection

Bases for control panel mounting

Order designation			Accessories (add. charge)	
Model	Order no.	DIN IEC 61554 dim.	Front panel	Order no.
BC 1000 NG	19001900	144 x 144 mm	FA 1000 I	39109000
BC 2000 NG	19002000	192 x 144 mm	FA 2000 I	39110000
BC 3000 NG	19001910	288 x 144 mm	FA 3000 I	39111000

Scope of delivery:
Base part with seal incl. integrated fixing kit for control panel mounting.

Accessories (additional charge):
FA...I: internal aluminium panel see page 240
in combination with a front element

Table of dimensions

Model	L	L1	L8
BC 1000 NG	133.40	96.50	144
BC 2000 NG	184.20	147.30	192
BC 3000 NG	280.72	243.82	288

Bases

Order designation				Accessories (add. charge)	
Model	Order no.	Model	Order no.	Front panel	Order no.
BC 1000	19000100	BC 1000 L	19000400	FA 1000 I	39109000
BC 2000	19000200	BC 2000 L	19000500	FA 2000 I	39110000
BC 3000	19000300	BC 3000 L	19000600	FA 3000 I	39111000

L = with air vents

Scope of delivery:
Base with seal (IP 65) or base with air vents without seal (IP 30)

Accessories (additional charge):
FA...I: internal aluminium panel see page 240
in combination with a front element

Table of dimensions

Model	L	L1
BC 1000 (L)	133.40	96.50
BC 2000 (L)	184.20	147.30
BC 3000 (L)	280.72	243.82

Bases, low

Order designation			Accessories (additional charge)	
Model	Order no.	Front panel	Order no.	
BC 1000 N	19000110	FA 1000 I	39109000	
BC 2000 N	19000230	FA 2000 I	39110000	
BC 3000 N	19000310	FA 3000 I	39111000	

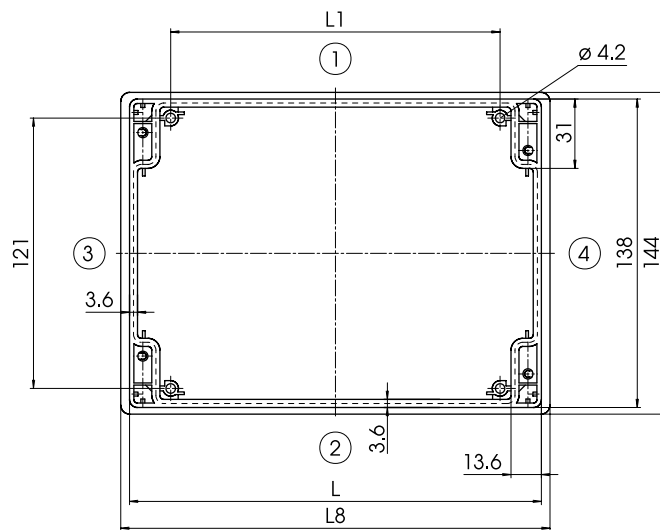
Scope of delivery:
Base, low, with seal

Accessories (additional charge):
FA...I: internal aluminium mounting panel, see page 240
in combination with a front element

Table of dimensions

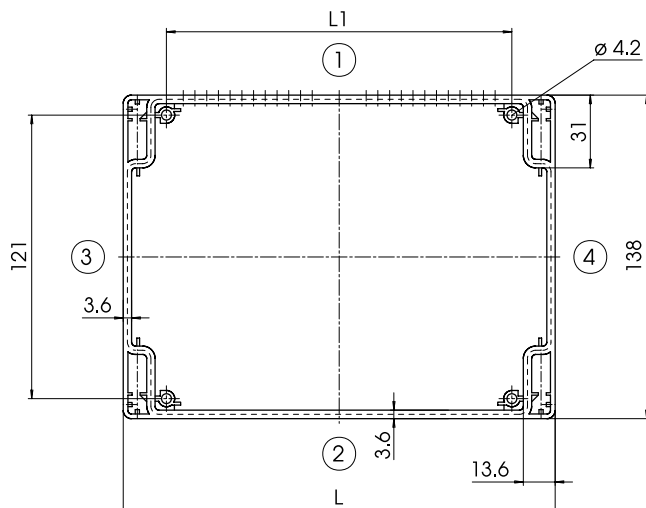
Model	L	L1
BC 1000 N	133.40	96.50
BC 2000 N	184.20	147.30
BC 3000 N	280.72	243.82

BC 1000 NG - BC 3000 NG



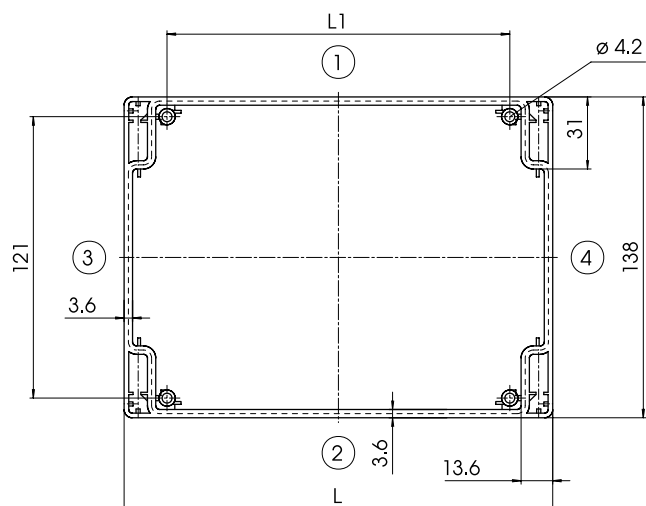
Z-2101356

BC 1000 (L) - BC 3000 (L)



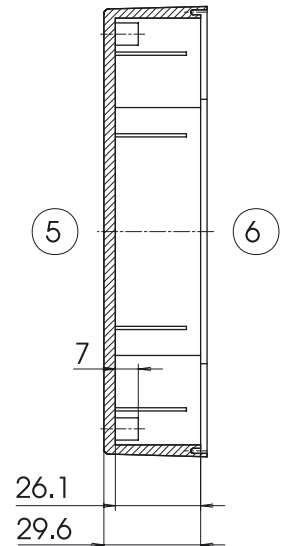
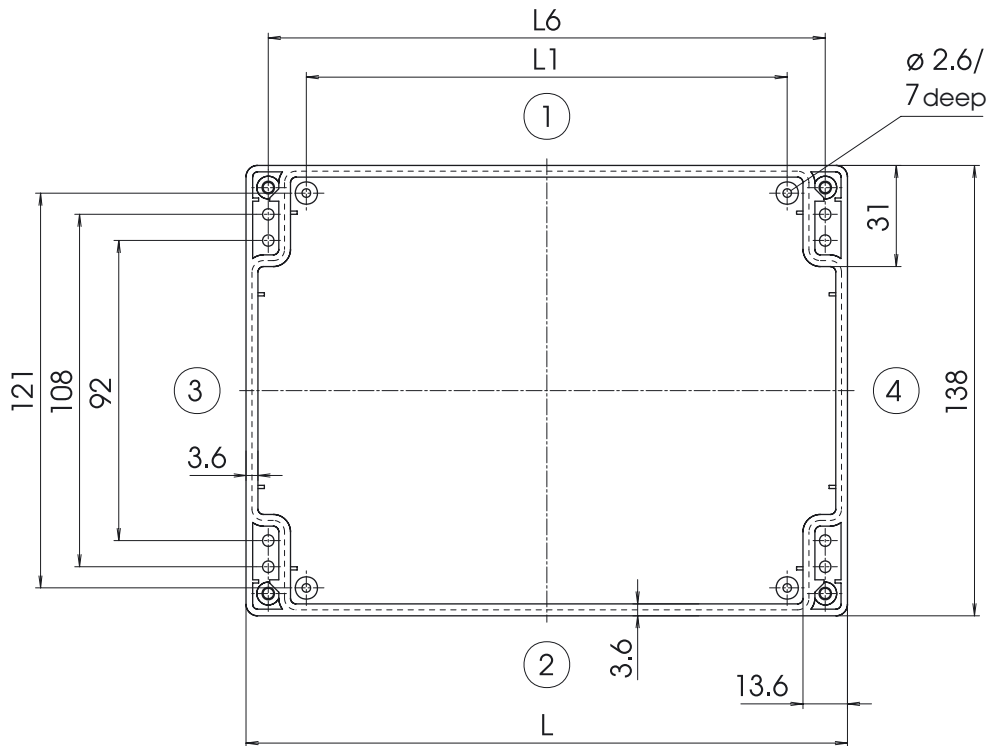
Z-2101351

BC 1000 N - BC 3000 N



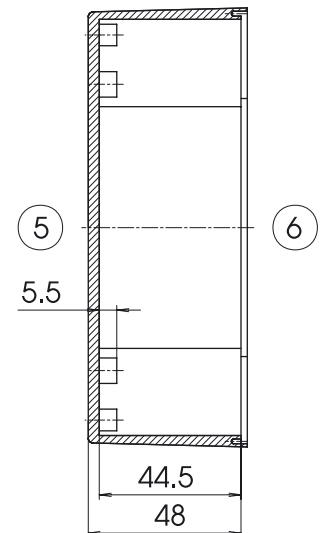
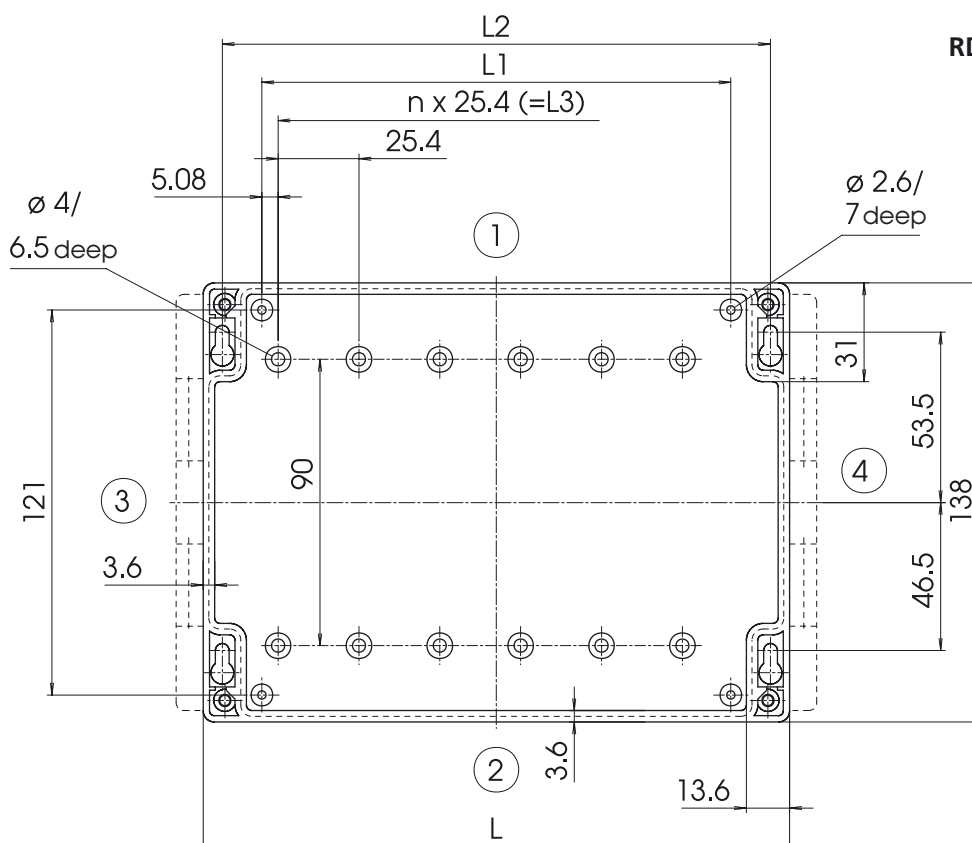
Z-2101355

RD 1000 - RD 3000



Z-2101350

RD 1000 H (SC) - RD 3000 H (SC)



Z-2101358

CombiCard 1000-3000 system components/rear parts



Ideal for wall mounting. The connection terminals can be accessed separately **without the need to open the complete system**. Type RD KSC with hinges allows you to swivel the enclosure unit to the right or left, as required, or to remove it completely from the fitted base. Easier servicing. IP 65 protection.



Ideal for wall mounting. The connection terminals can be accessed separately **without the need to open the complete system**. Type RD G-KSC with hinges allows you to swivel the enclosure unit to the right or left, as required, or to remove it completely from the fitted base. Easier servicing. IP 65 protection.

Rear lids with terminal compartment

Order designation

Model	Order no.	Model	Order no.
RD 1000 K	19004800	RD 1000 KSC*	19005100
RD 2000 K	19004900	RD 2000 KSC*	19005200
RD 3000 K	19005000	RD 3000 KSC*	19005300

K = terminal compartment

KSC = with terminal comp. and hinges on both sides

Accessories (additional charge)

Mounting plate	Order no.	Mounting plate	Order no.
MR 1000	39700000	MR 1000 K	39703000
MR 2000	39701000	MR 2000 K	39704000
MR 3000	39702000	MR 3000 K	39705000

Scope of delivery:

RD...K: Rear lid, terminal compartment cover, seals, screws

RD...KSC: Rear lid, terminal compartment cover, seals, screws, hinge elements and fixing material for attaching to the front-fitted system component.

Accessories (additional charge):

For mounting plates MR and MR...K, see page 241.

For information on fitting with cable glands or terminals, see pages 246-247.

Table of dimensions

Model	L	L1	L2	n	L3	L4
RD 1000 K (SC)	133.40	96.50	120.79	3	76.2	93.0
RD 2000 K (SC)	184.20	147.30	171.59	5	127.0	143.8
RD 3000 K (SC)	280.72	243.82	268.11	9	228.6	240.3

Rear lids with large terminal compartment

Order designation

Model	Order no.	Model	Order no.
RD 1000 G-K	19131100	RD 1000 G-KSC*	19131200
RD 2000 G-K	19231100	RD 2000 G-KSC*	19231200
RD 3000 G-K	19331100	RD 3000 G-KSC*	19331200

G-K = large terminal compartment

G-KSC = large term. comp. and hinges on both sides

Accessories (additional charge)

Mounting plate	Order no.	Mounting plate	Order no.
MR 1000	39700000	MR 1000 K	39703000
MR 2000	39701000	MR 2000 K	39704000
MR 3000	39702000	MR 3000 K	39705000

Scope of delivery:

RD...G-K: Rear lid, terminal compartment cover, seals, screws

RD...G-KSC: Rear lid, terminal compartment cover, seals, screws, hinge elements and fixing material for attaching to the front-fitted system component.

Accessories (additional charge):

For mounting plates MR and MR...K, see page 241.

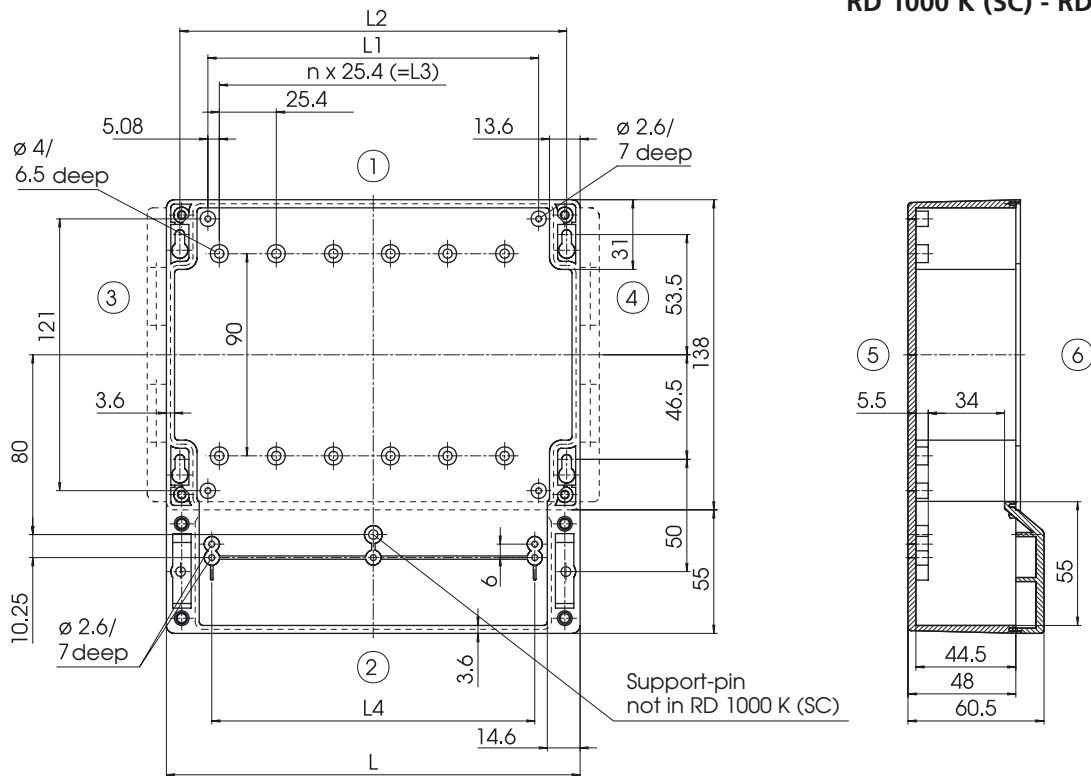
For hinge for large terminal compartment cover SC G-K, see page 243.

For information on fitting with cable glands or terminals, see pages 246-247.

Table of dimensions

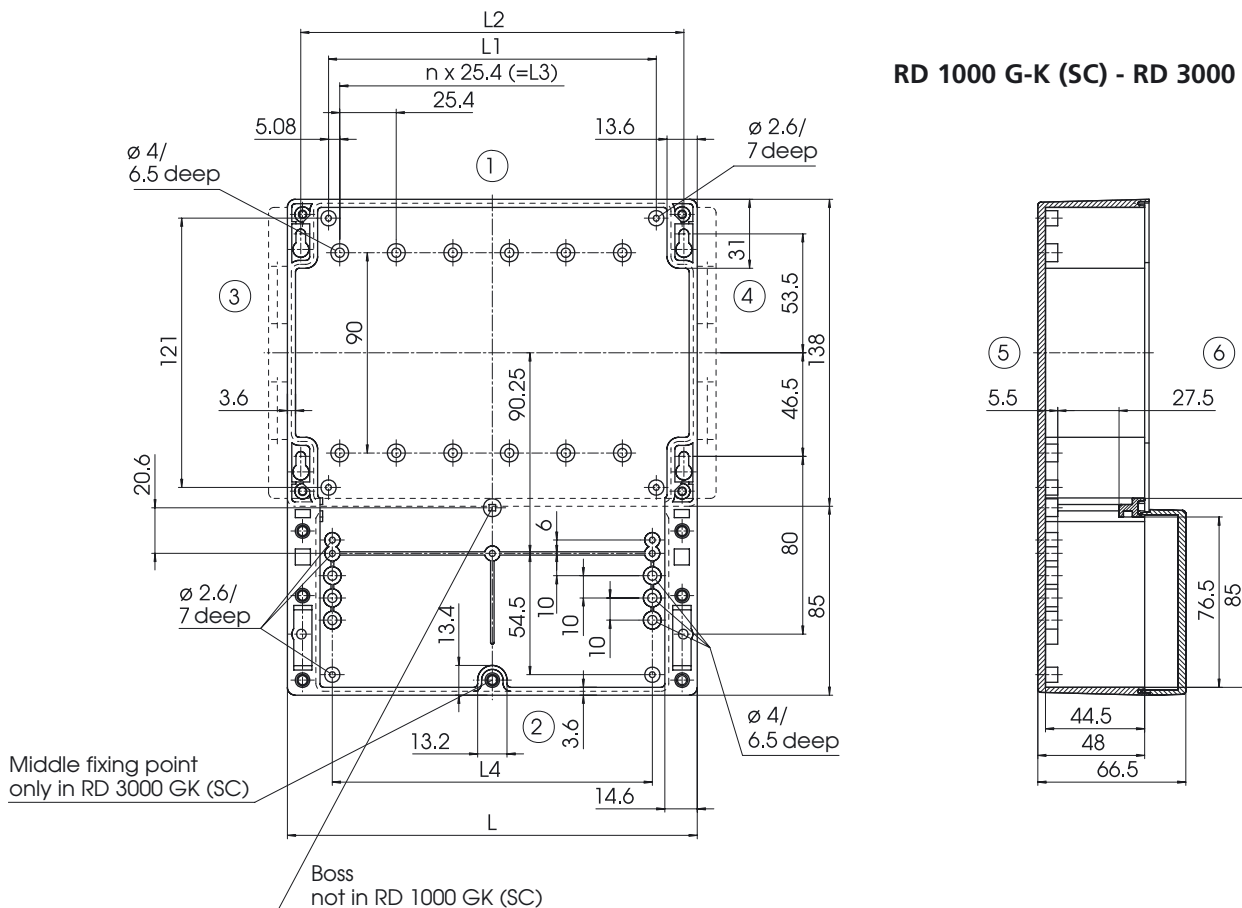
Model	L	L1	L2	n	L3	L4
RD 1000 GK (SC)	133.40	96.50	120.79	3	76.2	93.0
RD 2000 GK (SC)	184.20	147.30	171.59	5	127.0	143.8
RD 3000 GK (SC)	280.72	243.82	268.11	9	228.6	240.3

RD 1000 K (SC) - RD 3000 K (SC)



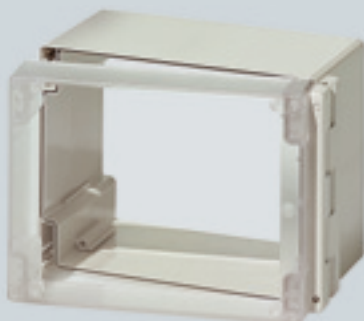
Z-2101349

RD 1000 G-K (SC) - RD 3000 G-K (SC)

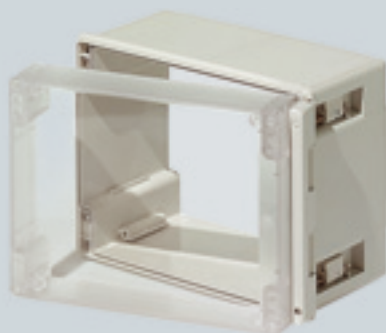


Z-2101359

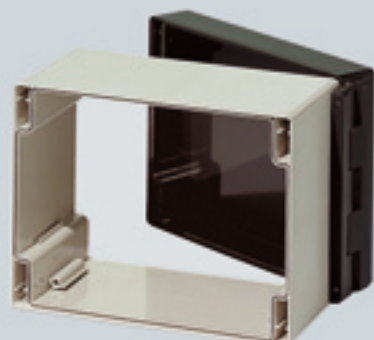
CombiCard 1000-3000 system components



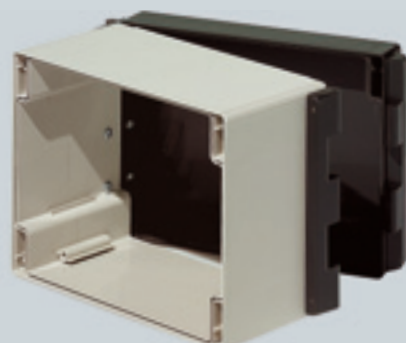
SC 1230 e.g. in combination with FD...G and BC...



SC 1230 NG e.g. in combination with BC...NG and FD...G



SC 1230 R e.g. in combination with RD... and BC...



DSC 1230 e.g. in combination with RD... and BC...

Hinge SC 1230

Order designation

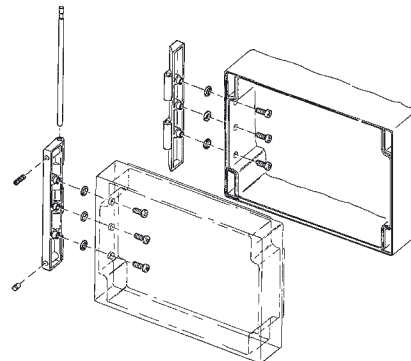
Model	Order no.
SC 1230*	39500000

Colour: light grey, similar to RAL 7035

1 front lid hinge for screwing between front parts and bases or between front parts and rear parts.

Approx. 135° opening angle.

Important: Not suitable for use with control panel mounting frame BC...NG..



Hinge SC 1230 NG

Order designation

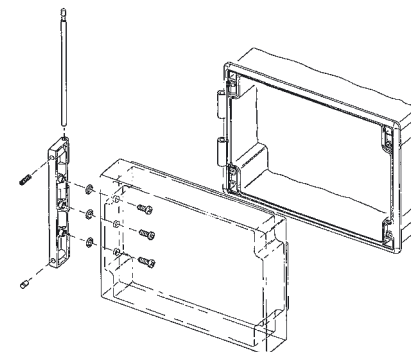
Model	Order no.
SC 1230 NG*	39501000

Colour: light grey, similar to RAL 7035

1 hinge for control panel mounting frame with front part.

Fitting to BC...NG must be carried out by BOPLA.

Approx. 100° opening angle.



Hinge SC 1230 R

Order designation

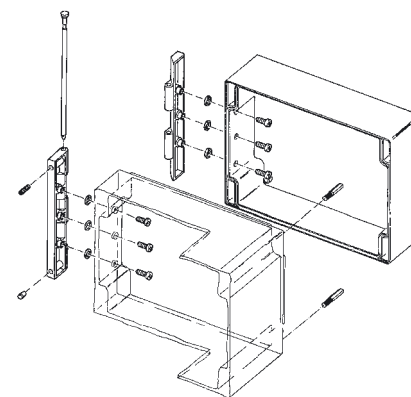
Model	Order no.
SC 1230 R*	39503000

Colour: graphite grey, sim. to RAL 7024

1 hinge for screwing between rear part and base.

Approx. 135° opening angle.

Important: When mounted on a wall, can only be used with lock. Use tie bars as with rear-mounted double hinge. Not for use with RD...-SC.



Hinge DSC 1230

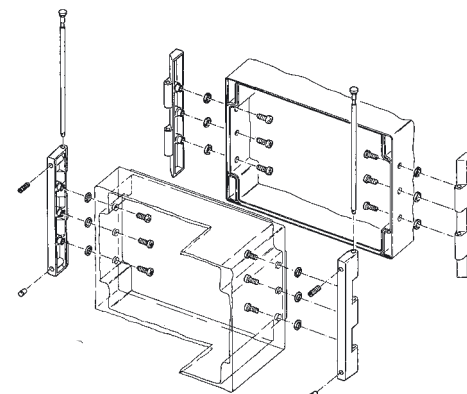
Order designation

Model	Order no.
DSC 1230*	39502000

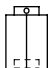
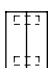
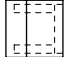
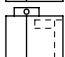
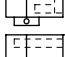
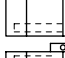

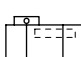
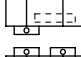

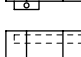


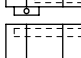
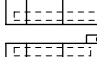

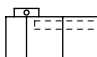
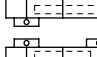
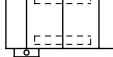
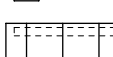



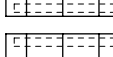
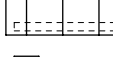
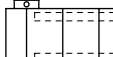
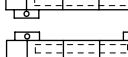



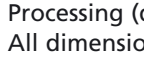

Colour: graphite grey, sim. to RAL 7024

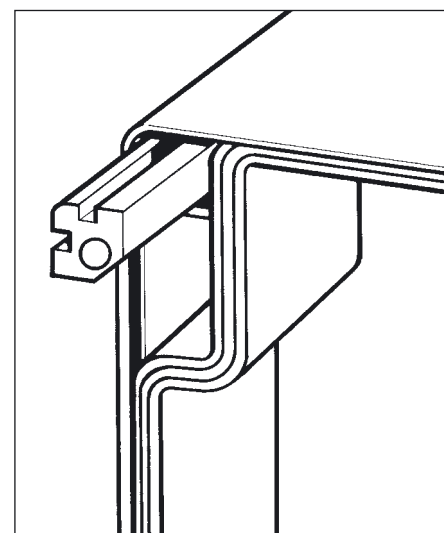
2 hinges for screwing between rear parts and bases. Approx. 135° opening angle. Can also be used with special tie bar between two bases.

Important: Do not order with RD...-SC, as they are included in the scope of delivery.



Tie bar sets for assembling individual system components

	Model	Order no.	Length	Application for:
	ZA 0050	39900000	22.9	1 front part, 1 rear part with hinge on one side
	ZA 0100	39901000	22.9	1 rear part and 1 front part
	ZA 0200	39902000	96.7	1 rear part, 1 base and
	ZA 0200 N	39902100	60.2	1 aluminium front panel
	ZA 0300*	39903000	82.4	1 rear part, 1 base and
	ZA 0300 N*	39903100	45.9	1 aluminium front panel with rear hinge on both sides
	ZA 0400	39904000	110.6	1 rear part, 1 base and front part
	ZA 0400 N	39904100	74.1	
	ZA 0500	39905000	91.8	1 rear part, 1 base and
	ZA 0500 N	39905100	55.3	1 front part with front hinge on one side
	ZA 0600	39906000	96.0	1 rear part, 1 base and
	ZA 0600 N	39906100	59.5	1 front part with rear hinge on both sides
	ZA 0700	39907000	77.4	1 rear part, 1 base and 1 front part with rear hinge on both sides and front hinge on one side
	ZA 0700 N	39907100	40.9	
	ZA 0800	39908000	184.5	1 rear part, 2 bases and
	ZA 0800 N	39908100	148.0	1 aluminium front panel or 19" IB (= internal design)
	ZA 0900*	39909000	170.0	1 rear part, 2 bases and
	ZA 0900 N*	39909100	133.5	1 aluminium front panel or 19" IB with rear hinge on both sides
	ZA 0010	39910000	198.2	1 rear part, 2 bases
	ZA 0010 N	39910100	161.7	and 1 front part
	ZA 0110	39911000	179.5	1 rear part, 2 bases and
	ZA 0110 N	39911100	143.0	1 front part with front hinge on one side
	ZA 0120*	39912000	183.9	1 rear part, 2 bases and
	ZA 0120 N*	39912100	147.4	1 front part with rear hinge on both sides
	ZA 0130	39913000	164.9	1 rear part, 2 bases and 1 front part with rear hinge on both sides and front hinge on one side
	ZA 0130 N	39913200	128.4	
	ZA 0140*	39914000	272.2	1 rear part, 3 bases and
	ZA 0140 N*	39914100	235.7	1 aluminium front panel or 19" IB (= internal design)
	ZA 0150*	39915000	257.6	1 rear part, 3 bases and
	ZA 0150 N*	39915100	221.1	1 aluminium front panel or 19" IB with rear hinge on both sides
	ZA 0160*	39916000	285.6	1 rear part, 3 bases and
	ZA 0160 N*	39916100	249.1	1 front part
	ZA 0170	39917000	267.2	1 rear part, 3 bases and
	ZA 0170 N	39917100	230.7	1 front part with front hinge on one side
	ZA 0180*	39918000	271.4	1 rear part, 3 bases and
	ZA 0180 N*	39918100	234.9	1 front part with rear hinge on both sides
	ZA 0190*	39919000	252.4	1 rear part, 3 bases and 1 front part with rear hinge on both sides and front hinge on one side
	ZA 0190 N*	39919100	215.9	



Selecting a tie bar:

If all the bases in your enclosure combination are 87.5 mm high, use the tie bar **without the letter N**.

If **one** base in your combination is type BC...N, use the tie bar **with letter N**.

If you are using **several** BC...N parts in an enclosure combination, use the special tie bar; please contact us for details.

* available on request

CombiCard 1000-3000 accessories



External aluminium front panel

For use with open/closed front frames.
IP 40 protection



Internal aluminium front panel

For use with open front frames.
IP 65 protection



Internal aluminium mounting panel

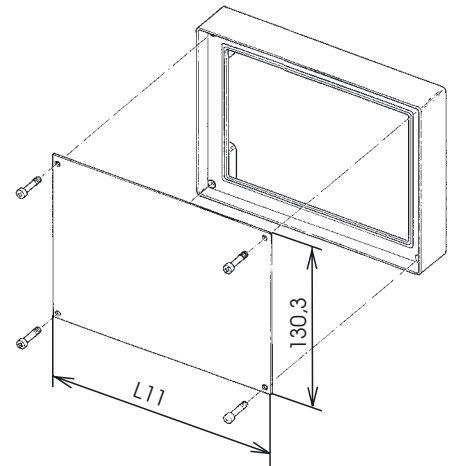
For accommodating operating elements which, for example, are to be protected by the clear lid.
Same protection as front element.

External aluminium front panels

Order designation

Model	Order no.	L11
FP 1000 AA	39103000	125.70
FP 2000 AA	39104000	176.50
FP 3000 AA	39105000	273.02

Note:
Each including fixing material.

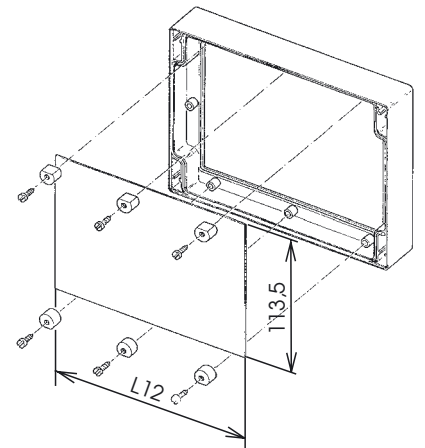


Internal aluminium front panels

Order designation

Model	Order no.	L12
FP 1000 AI	39100000	105.70
FP 2000 AI	39101000	156.50
FP 3000 AI	39102000	253.02

Note:
Fixing material included with FO... and FCT...FP.

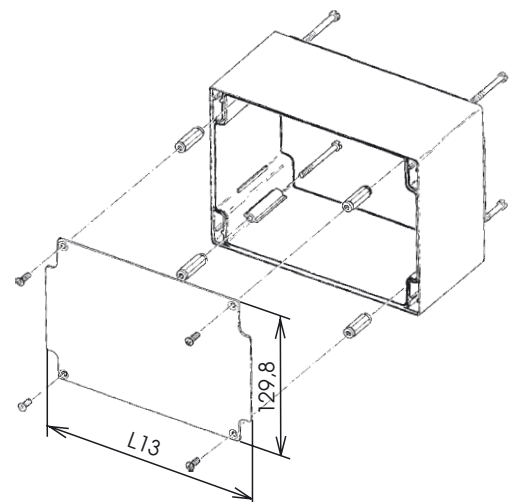


Internal mounting panels for base parts used in combination with a front element

Order designation

Model	Order no.	L13
FA 1000 I	39109000	125.20
FA 2000 I	39110000	176.00
FA 3000 I	39111000	272.52

Note:
Only for bases,
all types include fixing material.



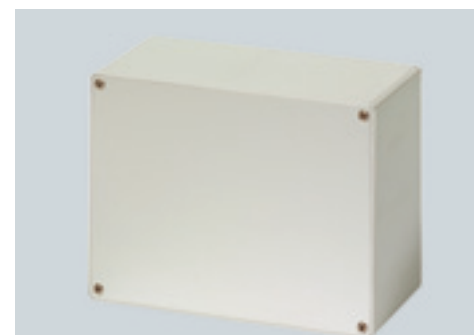
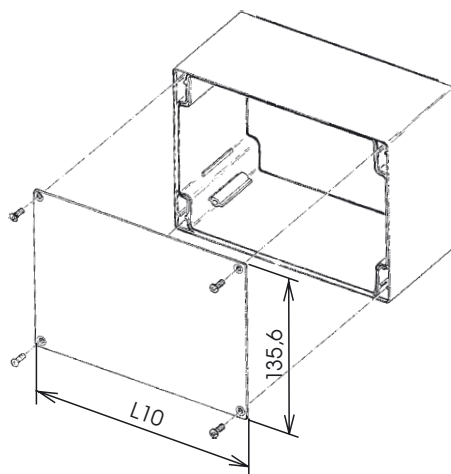
Aluminium front panels for base parts

Order designation

Model	Order no.	L10
FA 1000	39106000	131.00
FA 2000	39107000	181.80
FA 3000	39108000	278.32

Note:

Each including fixing material.



Aluminium front panel
Ingress protection IP 40

Mounting plates for rear wall lid

Order designation

Model	Order no.
MR 1000	39700000
MR 2000	39701000
MR 3000	39702000

Note:

Each including fixing material.



Mounting plate
for rear wall lid

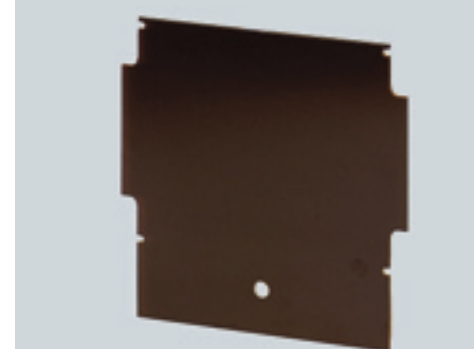
Mounting plates for rear wall lid with terminal compartment

Order designation

Model	Order no.
MR 1000 K	39703000
MR 2000 K	39704000
MR 3000 K	39705000

Note:

Each including fixing material.

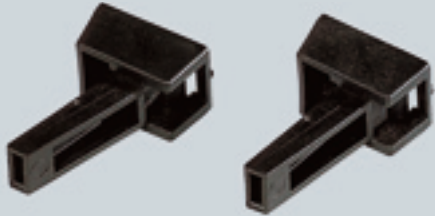


Mounting plate for
rear wall lid with
terminal compartment



Welcome to BOPLA City!

CombiCard 1000-3000 accessories



1 set of feet =
front: 2 pcs folding
rear: 2 pcs fixed



Handle

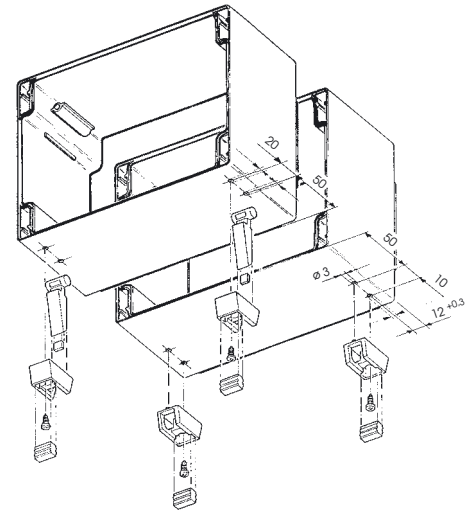


With the sturdy wall frame, the enclosure unit can be fixed to the wall without any need to open the unit.

Feet

Order designation

Model	Order no.
AB 1230	39603000



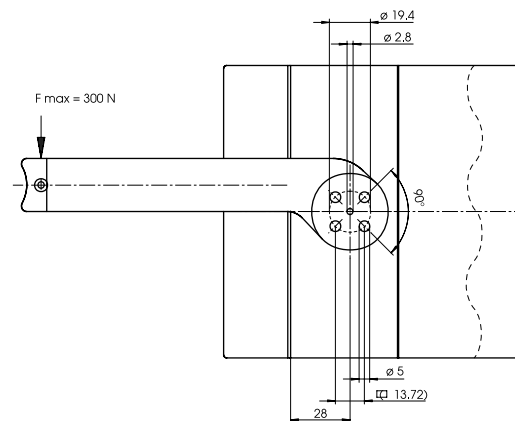
Handle

Order designation

Model	Order no.
HS 1000	39601020
HS 2000	39602020
HS 3000	39603020

With new mechanical system:
– higher carrying capacity
– can be mounted externally

Also for use with RD...H if required.
If used at the same time in combination with hinge SC 1230, fit the hinge to side 1 or 2.



Z-2101632

Wall frames

Order designation

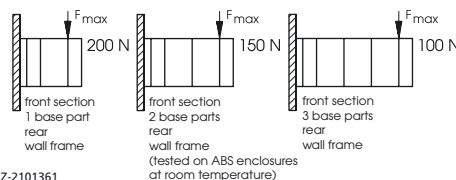
Model	Order no.	Model	Order no.
WR 1000	39604000	WR 1000 H	39607000
WR 2000	39605000	WR 2000 H	39608000
WR 3000	39606000	WR 3000 H	39609000

for low rear parts (29.6 mm) RD...

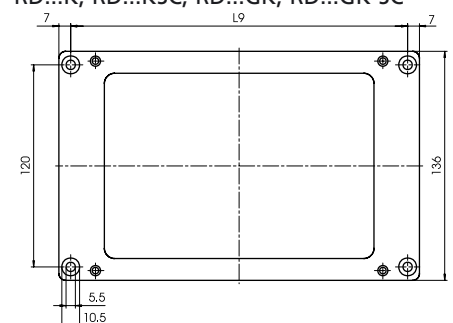
for high rear parts (48 mm) for RD...H, RD...K, RD...KSC, RD...GK, RD...GK-SC

Table of dimensions

Model	L 9	Height
WR 1000 (H)	150	11
WR 2000 (H)	200	11
WR 3000 (H)	296	11



Z-2101361



Cylinder lock

Order designation

Model	Order no.
Z 1230	39806000

Note:

Processing of the front lid and assembly of the counter piece must only be carried out by BOPLA.



This type of fastening can be used:

- on the front lid with SC 1230 (NG) (not suitable for FC../FCT)
- on the rear lid with SC 1230 R

Knurled screw

Order designation

Model	Order no.
RS 1230	39805000



1 set of knurled screws (2 pcs) which can be used with front (FD, FDG) or rear (RD) lids instead of the standard screws.

Terminal compartment lid hinge

Order designation

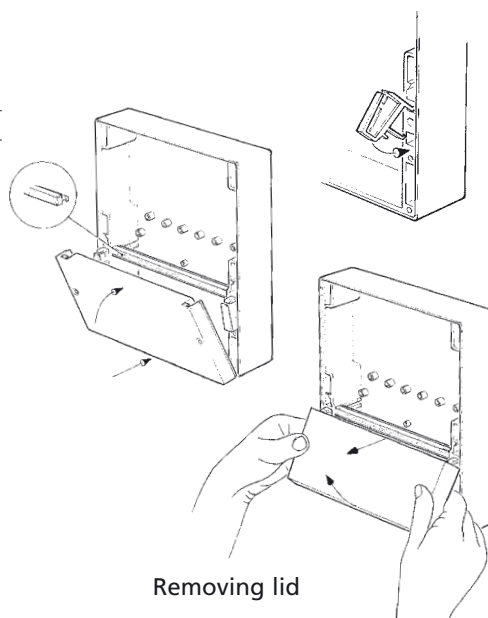
Model	Order no.
SC G-K	39500600

Mounting hinges:

- slot hinge in RD...GK/SC
- snap lid on

Hinge functions:

- holds lid in open position
- lid can be removed if required



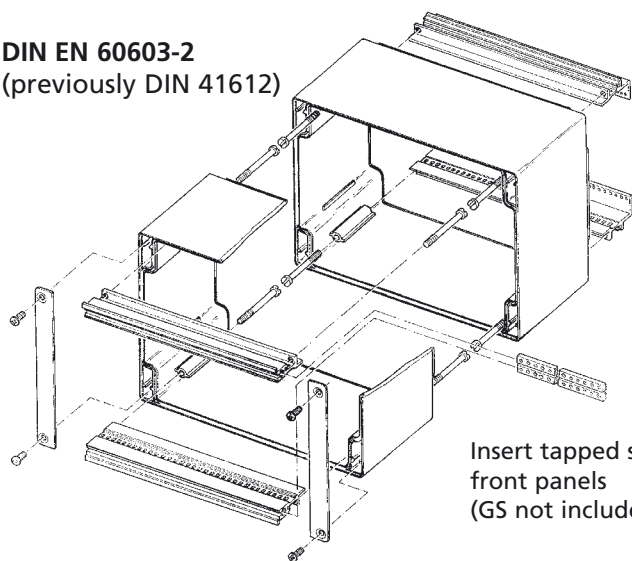
Removing lid



1 set of terminal compartment lid hinges (2 pcs). This hinge connects the terminal compartment lid permanently with the base part.

CombiCard 1000-3000 accessories

DIN EN 60603-2 (previously DIN 41612)



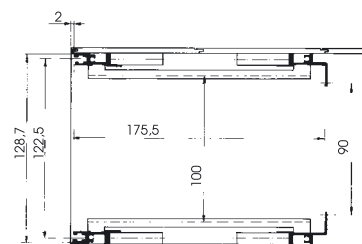
Insert tapped strips GS to mount front panels
(GS not included in scope of delivery).

Order designation

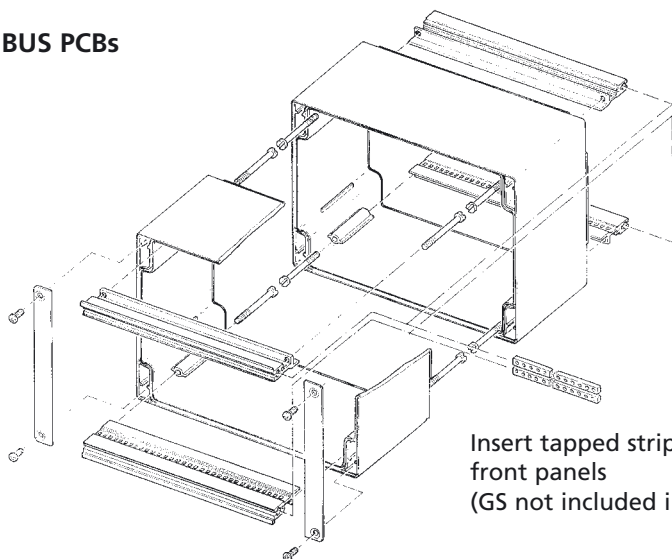
Model	Order no.	TE
IB 1000.12	39200000	20
IB 2000.12	39201000	30
IB 3000.12	39202000	49

19" internal design for connector bar DIN EN 60603-2 with blind front panels.

For encl. assembly without front part.



BUS PCBs



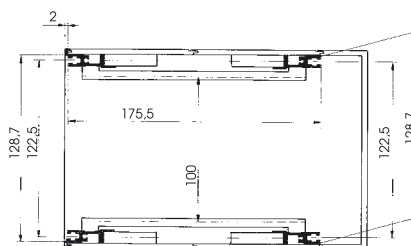
Insert tapped strips GS to mount front panels
(GS not included in scope of delivery).

Order designation

Model	Order no.	TE
IB 1000 PI	39206000	20
IB 2000 PI	39207000	30
IB 3000 PI	39208000	49

19" internal design for BUS PCB with blind front panels.

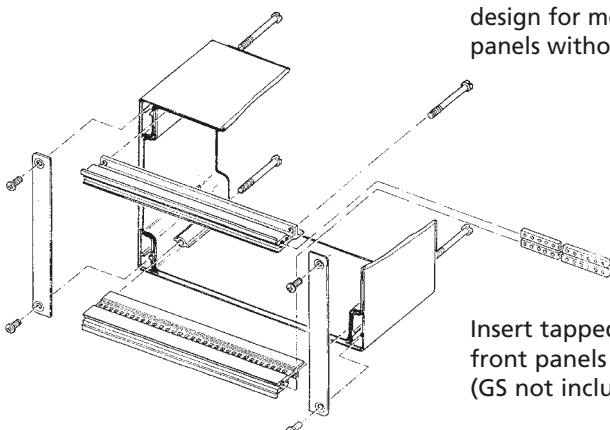
For enclosure assembly without front part.



Front module rails

19" front with blind front panels.

Front module rails of the IB internal design for mounting 19" part front panels without use of Euro card.

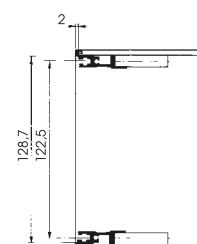


Insert tapped strips GS to mount front panels
(GS not included in scope of delivery).

Order designation

Model	Order no.	TE
IB 1000 F	39218000	20
IB 2000 F	39219000	30
IB 3000 F	39220000	49

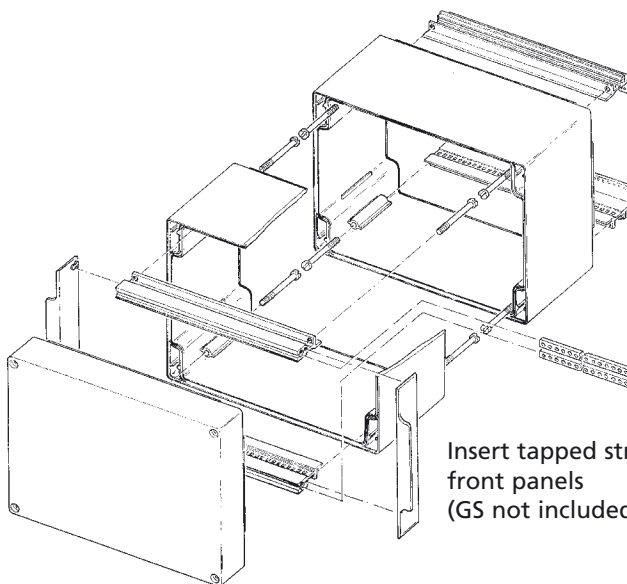
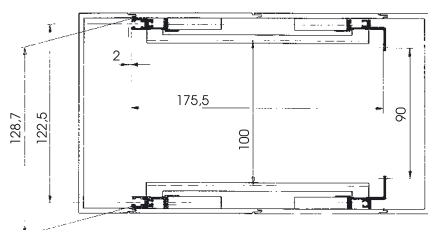
For encl. assembly without front panel.



Order designation

Model	Order no.	TE
IL 1000.12	39209000	20
IL 2000.12	39210000	30
IL 3000.12	39211000	49

19" internal design for connector bars DIN EN 60603-2 when using a front lid.



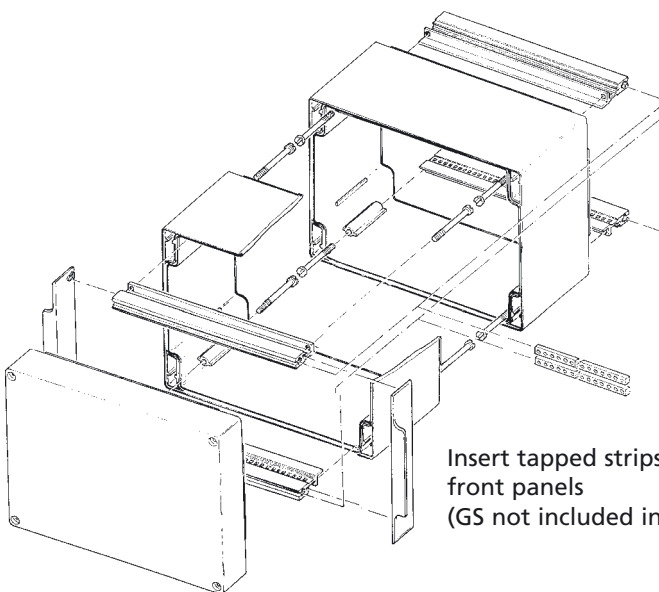
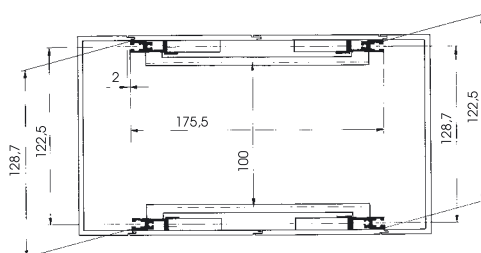
DIN EN 60603-2
(previously
DIN 41612)

Insert tapped strips GS to mount front panels
(GS not included in scope of delivery).

Order designation

Model	Order no.	TE
IL 1000 PI	39215000	20
IL 2000 PI	39216000	30
IL 3000 PI	39217000	49

19" internal design for BUS PCB when using a front lid.



BUS PCBs

Insert tapped strips GS to mount front panels
(GS not included in scope of delivery).

Order designation

Tapped strips

Model	Order no.	TE	
GS 1000	39800000	20	1 set = 2 pcs
GS 2000	39801000	30	1 set = 2 pcs
GS 3000	39802000	49	1 set = 2 pcs

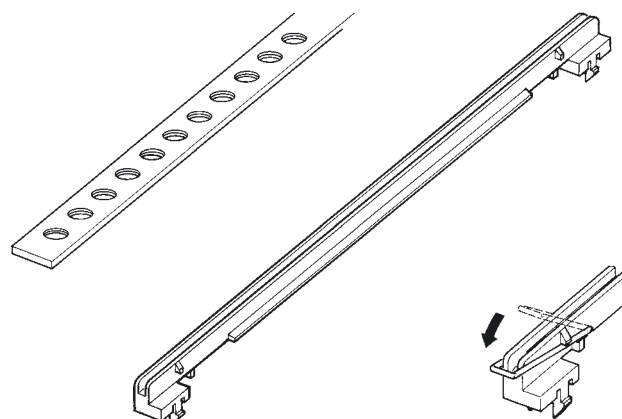
Card guide

Model	Order no.	
KF 1230	39302000	PU = 10 pcs

Card securing device

Model	Order no.	
KS 1230	39301000	PU = 10 pcs

Tapped strips / card guide / card securing device



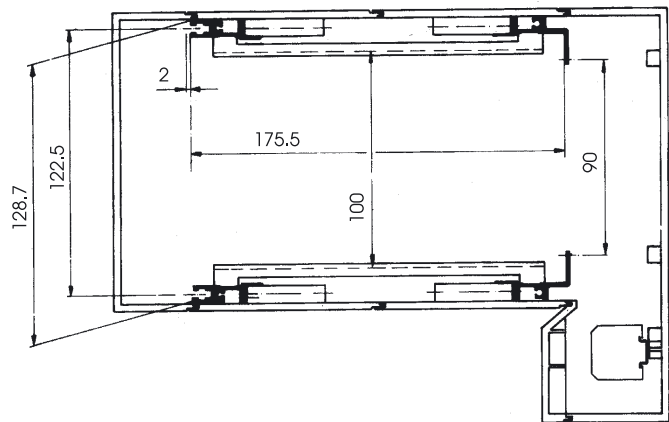
CombiCard 1000-3000 accessories

Information on 19" assembly

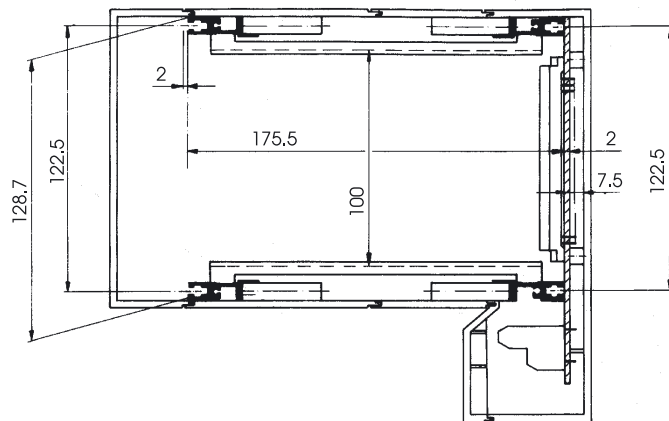
CombiCard technology makes 3 different assembly types possible:

1. The use of 2 bases (87.5 mm high) in connection with 1 rear element results in conventional wiring of the DIN plug-in connectors. For example, by using a combination with a terminal compartment, the plug-in connectors are connected to the connection terminals via a harness (see drawing 1).
2. By means of the combination of a high base (87.5 mm), a low base (51.0 mm) and the 19" internal design PI (BUS PCB), it is possible to mount the 19" plug-in connectors and the connection terminals on a common PCB in the rear lid (see drawing 2).
3. By using at least two high bases, the 19" internal design can, if required, be set up to 15 mm deeper in the enclosure.

Drawing 1 ▶



Drawing 2 ▶



Handle / Pg threaded drill holes

Max. Pg threaded drill holes in rear lids for cable glands

Model	Side 1/2						Side 3/4					
	Pg 7	Pg 9	Pg 11	Pg 13.5	Pg 16	Pg 21	Pg 7	Pg 9	Pg 11	Pg 13.5	Pg 16	Pg 21
RD 1000 (G-) K	10	6	4	4	3	3	8	4	3	3	2	2
RD 2000 (G-) K	16	9	7	6	5	4	8	4	3	3	2	2
RD 3000 (G-) K	24	12	10	8	8	6	8	4	3	3	2	2
RD 1000 (G-) KSC	10	6	4	4	3	3	4	3	3*	3*	-	-
RD 2000 (G-) KSC	16	9	7	6	5	4	4	3	3*	3*	-	-
RD 3000 (G-) KSC	24	12	10	8	8	6	4	3	3*	3*	-	-
RD 1000 H	10	6	4	4	3	3	8	4	3	3	2	2
RD 2000 H	16	9	7	6	5	4	8	4	3	3	2	2
RD 3000 H	24	12	10	8	8	6	8	4	3	3	2	2
RD 1000 HSC	10	6	4	4	3	3	4	3	3*	3*	-	-
RD 2000 HSC	16	9	7	6	5	4	3	3*	3*	-	-	-
RD 3000 HSC	24	12	10	8	8	6	4	3	3*	3*	-	-
RD 1000	6	5*	4*	4*	-	-	4	3	3*	3*	-	-
RD 2000	8	7*	6*	5*	-	-	4	3	3*	3*	-	-
RD 3000	14	11*	10*	9*	-	-	4	3	3*	3*	-	-

*Note : If a mounting plate is used at the same time, it must be opened in the appropriate places to accommodate the cable glands.

Model	Weidmüller		Phoenix		
	AKZ 1.5	AKZ 4	MBK 2.5	MBK 5	MBK 10
V ~ Gr. C	250	380	500	500	500
A	20	36	19.535	46	
mm ²	1.5	4	1.5 4	6	
RD 1000 K (SC)	14	12	15	12	10
RD 2000 K (SC)	20	16	20	18	14
RD 3000 K (SC)	38	32	40	34	28
RD 1000 G-K (SC)	14	12	15	12	10
RD 2000 G-K (SC)	20	16	20	18	14
RD 3000 G-K (SC)	38	32	40	34	28

Terminal accessories

End-angle pieces	2	2	2	2	2
Back plates	1	1	-	-	-

As an alternative to the DIN rail, assignment can also be carried out on mounting plate MR...K (see page 241).

DIN rails

Model	Order no.	
TS 1000	39115000	TS 15 for CC 1000, length: 100 mm
TS 2000	39116000	TS 15 for CC 2000, length: 153 mm
TS 3000	39117000	TS 15 for CC 3000, length: 250 mm

Possible terminal assignment

in connection with DIN rail
TS 15 (see also diagram 1
on p. 246)

If the terminals are soldered, the following numbers can be achieved:

Soldered terminals with 2.5 or 2.54 pitch

Model	single-row	double-row (double-deck terminals)
RD 1000 K (SC)	17	34
RD 2000 K (SC)	26	52
RD 3000 K (SC)	44	88
RD 1000 G-K (SC)	17	34
RD 2000 G-K (SC)	26	52
RD 3000 G-K (SC)	44	88

Possible terminal assignment

for soldered terminals
(see also diagram 2
on page 246)