

Euromas-Polycarbonate/ABS



The enclosure line with IP 65 ingress protection, manufactured using high-quality polycarbonate or lower-priced ABS, offers optimal protection for your components. The polycarbonate (M...) enclosures are UL-listed.

36 different enclosure sizes and a wide range of accessories permit the fitting of products from terminals (available as accessories) to high-value electronics.

Enclosure material: Polycarbonate, ABS.
For technical data see pages 646-651.

Colour: Light grey, similar to RAL 7035.
Special colours on request.

Scope of delivery: Upper and lower section; lid screws made of V2A; self-tapping screws for mounting bosses.

Ingress protection: IP65/DIN EN 60529; increased protection up to IP x7 on request.

Lid seal: Sponge cord (neoprene) in lid groove.
For technical data see page 651.

Accessories (additional charge):

M: Mounting plate, laminated paper (Pertinax), zinc-coated steel for model 260

RD: Set of knurled screws = 4 pcs

F: Set of rubber feet = 4 pcs

WL: Set of wall brackets = 4 pcs

TS 15: Top hat rail DIN EN 60715 TH15

TS 32: G-rail DIN EN 60715 G 32

TS 35: Top hat rail DIN EN 60715 TH35

SchM: Hinge for M/T

Lid with silicone seal on request.

Notes:

- All M and M...G enclosures are listed under UL file no. 196 706 UL.
- We recommend fitting the mounting plate or the DIN-rails with the self-tapping screws (included with the enclosure).
- Threaded inserts are required for assembly with metric screws. See page 643.
- Cable glands, see page 614 ff.
- Terminal assignment, see page 409
- Material shrinkage may result in ABS enclosures being approx. 0.1 – 0.25% larger than the PC enclosures illustrated.
- For Vestamid enclosures suitable for F05-insertion, please see pages 436-437.

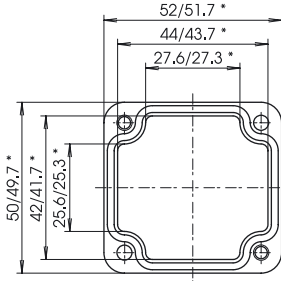
Polycarbonate enclosures				ABS enclosures				External dim.		
Model	Order no.	Model	Order no.	Model	Order no.	Model	Order no.	L	W	H
M 205	02205000	M 205 G	02205400	T 205	03205000	T 205 SV*	03205400	52	50	35
M 206	02206000	M 206 G	02206200	T 206	03206000	T 206 SV*	03206400	65	50	35
M 208	02208000	-	-	T 208	03208000	T 208 SV*	03208400	98	64	36
M 210	02210000	M 210 G	02210100	T 210	03210000	T 210 SV*	03210400	82	80	55
M 215	02215000	M 215 G	02215100	T 215	03215000	T 215 SV*	03215400	120	80	55
M 216	02216000	M 216 G	02216100	T 216	03216000	T 216 SV*	03216400	120	80	60
M 217	02217000	M 217 G	02217200	T 217	03217000	T 217 SV*	03217400	122	120	55
M 219	02219000	-	-	T 219	03219000	T 219 SV*	03219400	160	80	60
M 220	02220000	M 220 G	02220100	T 220	03220000	T 220 SV*	03220400	160	80	55
M 221	02221000	M 221 G	02221100	T 221	03221000	T 221 SV*	03221400	200	120	75
M 223	02223000	M 223 G	02223100	T 223	03223000	T 223 SV*	03223400	200	150	75
M 225	02225000	M 225 G	02225100	T 225	03225000	T 225 SV*	03225400	82	80	85
M 226	02226000	M 226 G	02226100	T 226	03226000	T 226 SV*	03226400	120	80	85
M 227	02227000	M 227 G	02227100	T 227	03227000	T 227 SV*	03227400	122	120	85
M 228	02228000	M 228 G	02228100	T 228	03228000	-	-	122	120	105
M 230	02230000	-	-	T 230	03230000	T 230 SV*	03230400	120	80	90
M 231	02231000	M 231 G	02231100	T 231	03231000	T 231 SV*	03231400	160	80	85
M 235	02235000	-	-	T 235	03235000	T 235 SV*	03235400	160	80	90
M 237	02237000	M 237 G	02237100	T 237	03237000	T 237 SV*	03237400	200	120	90
M 238	02238000	M 238 G	02238100	T 238	03238000	T 238 SV*	03238400	160	120	90
M 2381	02238200	M 2381 G	02238300	T 2381	03238200	-	-	160	120	75
M 240	02240000	M 240 G	02240100	T 240	03240000	T 240 SV*	03240400	250	160	90
M 2401	02240200	M 2401 G	02240300	T 2401	03240200	T 2401 SV*	03240240	240	160	90
M 241	02241000	-	-	T 241	03241000	T 241 SV*	03241400	250	160	120
M 242	02242000	M 242 G	02242100	T 242	03242000	T 242 SV*	03242400	240	120	100
M 243	02243000	M 243 G	02243100	T 243	03243000	T 243 SV*	03243400	240	160	120
M 244	02244000	M 244 G	02244100	T 244	03244000	-	-	340	150	100
M 245	02245000	-	-	T 245	03245000	-	-	340	150	120
M 246	02246000	M 246 G	02246100	T 246	03246000	-	-	160	120	140
M 250	02250000	-	-	T 250	03250000	-	-	250	160	150
M 251	02251000	-	-	T 251	03251000	T 251 SV*	03251400	360	160	100
M 252	02252000	-	-	-	-	-	-	300	230	65
M 253	02253000	M 253 G	02253100	T 253	03253000	T 253 SV*	03253400	300	230	85
M 254	02254000	M 254 G	02254100	T 254	03254000	T 254 SV*	03254400	300	230	110
M 255	02255000	M 255 G	02255100	T 255	03255000	T 255 SV*	03255400	360	200	150
				T 260	03260000	-	-	400	360	150

G = clear lid

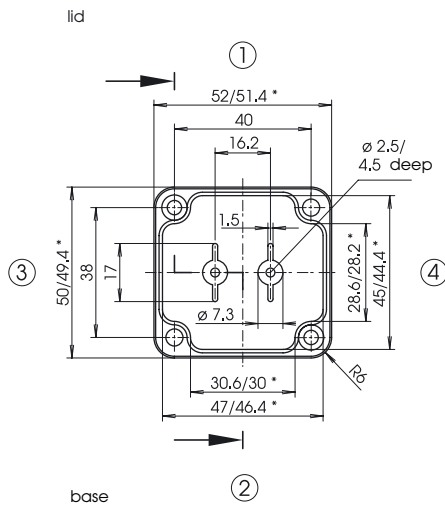
SV = quick-release fastening
* available on request

Euromas-Polycarbonate/ABS

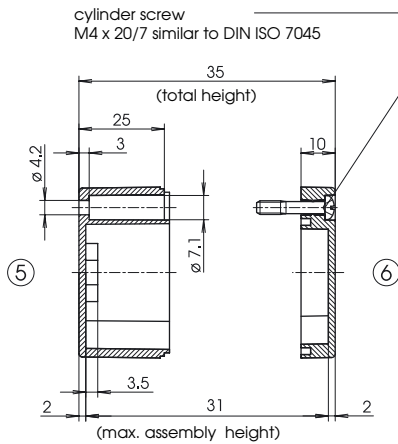
M/T 205



*= Dimension reduced at bottom due to conical form.
Tolerances to DIN 16901-130.



Z-2501098



Due to a different shrinkage rate of the plastic material, ABS enclosures can be about 0.1 - 0.25% bigger than the PC enclosures shown in the drawing.

Order designation

Polycarbonate enclosures	Order no.
M 205	02205000
M 205 G	02205400

(G = with clear lid)

ABS enclosures	Order no.
T 205	03205000
T 205 SV*	03205400

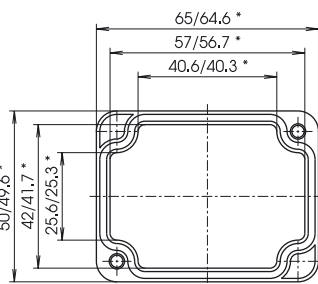
(SV = quick-release fastening)

* available on request

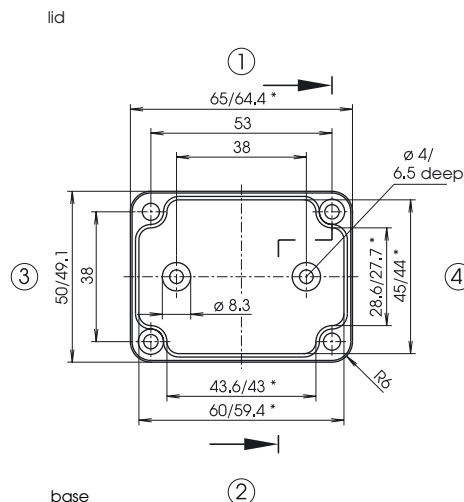
Accessories (additional charge)

Order no.	Order no.
M: Mounting plate, 1.5 mm	22000100
TS 15: Top hat rail DIN EN 60715 TH15	22001800

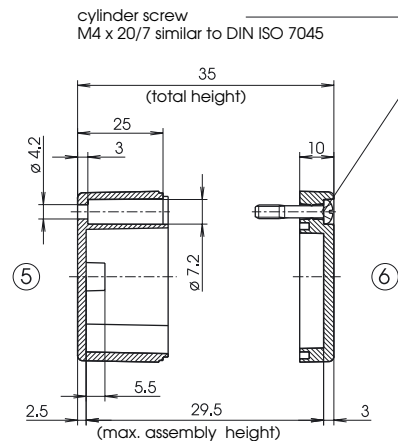
M/T 206



*= Dimension reduced at bottom due to conical form.
Tolerances to DIN 16901-130.



Z-2501099



Due to a different shrinkage rate of the plastic material, ABS enclosures can be about 0.1 - 0.25% bigger than the PC enclosures shown in the drawing.

Order designation

Polycarbonate enclosures	Order no.
M 206	02206000
M 206 G	02206200

(G = with clear lid)

ABS enclosures	Order no.
T 206	03206000
T 206 SV*	03206400

(SV = quick-release fastening)

* available on request

Accessories (additional charge)

Order no.	Order no.
M: Mounting plate, 1.5 mm	22000200
TS 15: Top hat rail DIN EN 60715 TH15	22001710

Order designation

Polycarbonate enclosure	Order no.
M 208	02208000

M/T 208

ABS enclosures

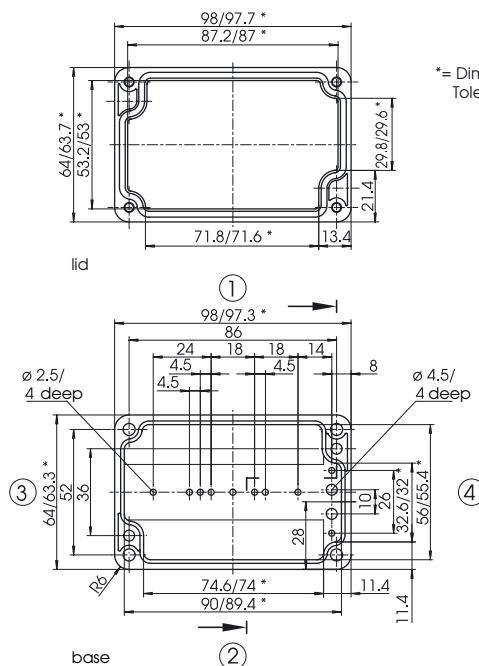
T 208	Order no.
T 208 SV*	03208400

(SV = quick-release fastening)

* available on request

Accessories (additional charge)

F: Set of rubber feet = 4 pcs	Order no.
	22003300



*= Dimension reduced at bottom due to conical form.
Tolerances to DIN 16901-130.

Order designation

Polycarbonate enclosures	Order no.
M 210	02210000

M 210 G	02210100
---------	----------

(G = with clear lid)

M/T 210

ABS enclosures

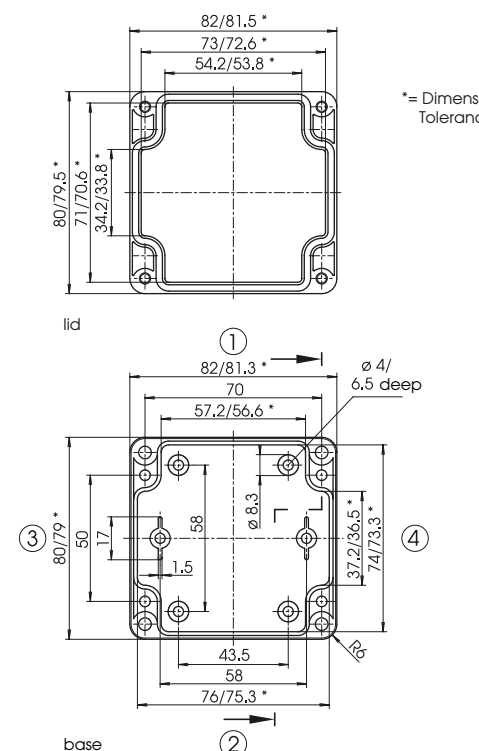
T 210	Order no.
T 210 SV*	03210400

(SV = quick-release fastening)

* available on request

Accessories (additional charge)

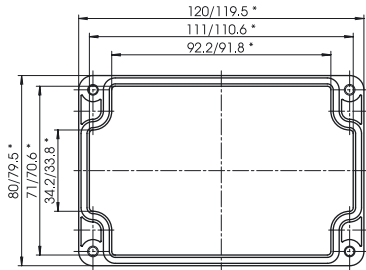
M: Mounting plate, 1.5 mm	Order no.
RD: Set of knurled screws = 4 pcs	22003100
F: Set of rubber feet = 4 pcs	22003300
WL: Set of wall brackets = 4 pcs	22004900
TS 15: Top hat rail DIN EN 60715 TH15	22001700
TS 32: G-rail DIN EN 60715 G 32	22001701
TS 35: Top hat rail DIN EN 60715 TH35	22001702



*= Dimension reduced at bottom due to conical form.
Tolerances to DIN 16901-130.

Euromas-Polycarbonate/ABS

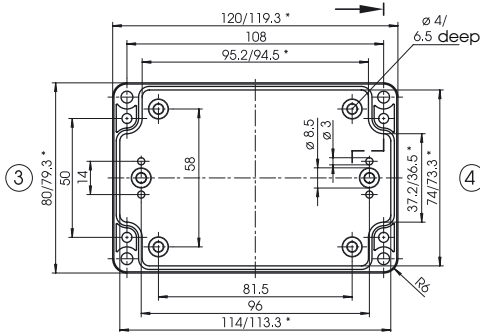
M/T 215



lid

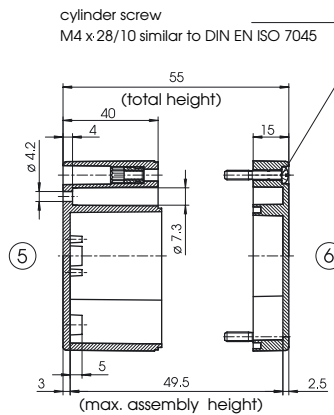
①

* = Dimension reduced at bottom due to conical form.
Tolerances to DIN 16901-130.



base

②



(max. assembly height)

Due to a different shrinkage rate of the plastic material, ABS enclosures cc be about 0.1 - 0.25% bigger than the PC enclosures shown in the drawing.

Order designation

Polycarbonate enclosures	Order no.
M 215	02215000
M 215 G	02215100

(G = with clear lid)

ABS enclosures	Order no.
T 215	03215000
T 215 SV*	03215400

(SV = quick-release fastening)

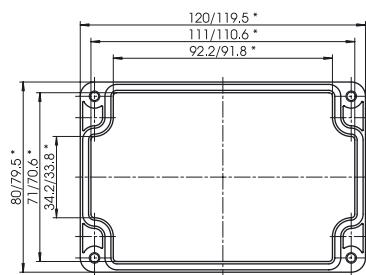
* available on request

Accessories (additional charge)

Accessories	Order no.
M: Mounting plate, 1.5 mm	22000400
RD: Set of knurled screws = 4 pcs	22003100
F: Set of rubber feet = 4 pcs	22003300
WL: Set of wall brackets = 4 pcs	22004900
TS 15: Top hat rail DIN EN 60715 TH15	22001900
TS 35: Top hat rail DIN EN 60715 TH35	22001910

Z-2501102

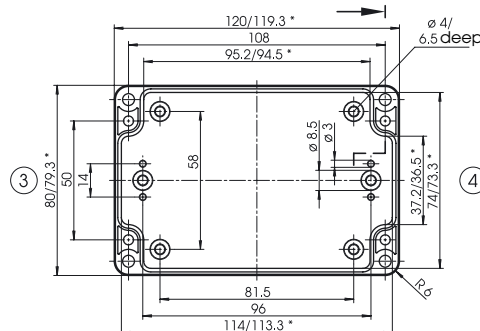
M/T 216



lid

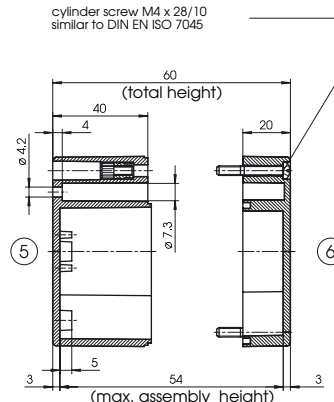
①

* = Dimension reduced at bottom due to conical form.
Tolerances to DIN 16901-130.



base

②



(max. assembly height)

Due to a different shrinkage rate of the plastic material, ABS enclosures can be about 0.1 - 0.25% bigger than the PC enclosures shown in the drawing.

Order designation

Polycarbonate enclosures	Order no.
M 216	02216000
M 216 G	02216100

(G = with clear lid)

ABS enclosures	Order no.
T 216	03216000
T 216 SV*	03216400

(SV = quick-release fastening)

* available on request

Accessories (additional charge)

Accessories	Order no.
M: Mounting plate, 1.5 mm	22000400
F: Set of rubber feet = 4 pcs	22003300
WL: Set of wall brackets = 4 pcs	22004900
TS 15: Top hat rail DIN EN 60715 TH15	22001900
TS 35: Top hat rail DIN EN 60715 TH35	22001910

Z-2501103

Order designation

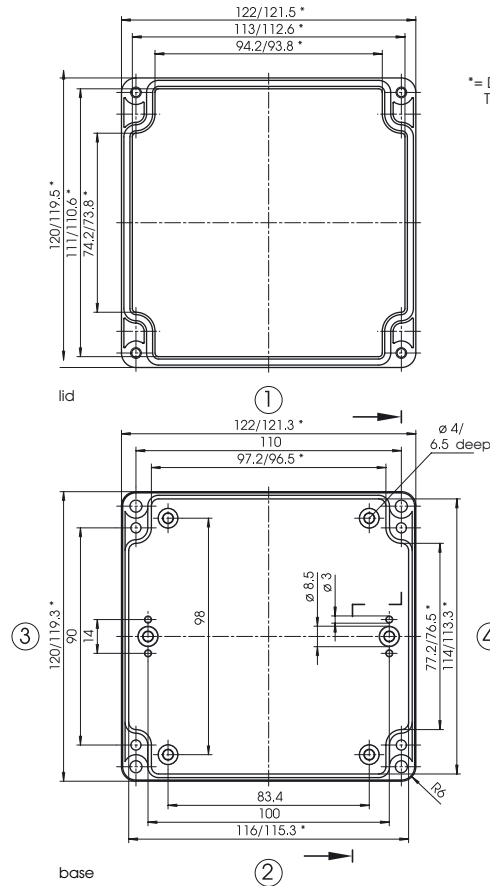
Polycarbonate enclosures	Order no.
M 217	02217000
M 217 G	02217200

(G = with clear lid)

ABS enclosures	Order no.
T 217	03217000
T 217 SV*	03217400

(SV = quick-release fastening)
* available on request

Accessories (additional charge)	Order no.
M: Mounting plate, 2.0 mm	22000500
RD: Set of knurled screws = 4 pcs	22003100
F: Set of rubber feet = 4 pcs	22003300
WL: Set of wall brackets = 4 pcs	22004900
TS 15: Top hat rail DIN EN 60715 TH15	22001900
TS 35: Top hat rail DIN EN 60715 TH35	22001910

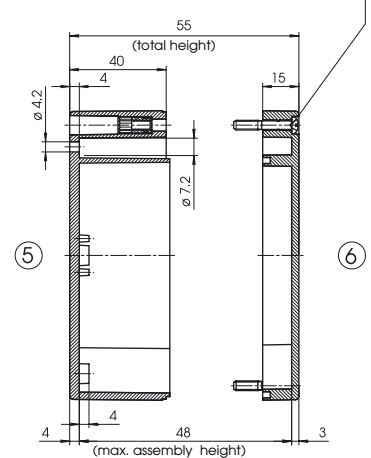


M/T 217

* = Dimension reduced at bottom due to conical form.
Tolerances to DIN 16901-130.

Due to a different shrinkage rate of the plastic material, ABS enclosures can be about 0.1 - 0.25% bigger than the PC enclosures shown in the drawing.

cylinder screw M4 x 24/10 similar DIN EN ISO 7045



Z-2501104

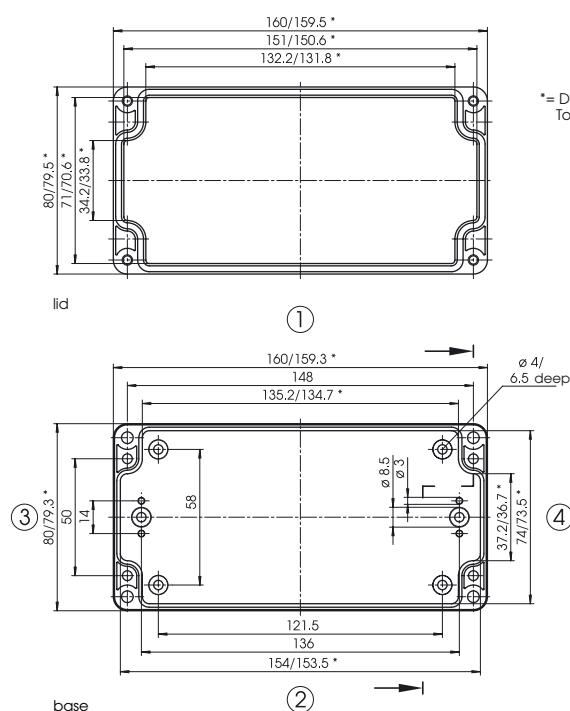
Order designation

Polycarbonate enclosure	Order no.
M 219	02219000

ABS enclosures	Order no.
T 219	03219000
T 219 SV*	03219400

(SV = quick-release fastening)
* available on request

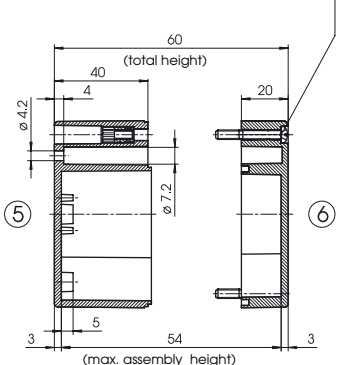
Accessories (additional charge)	Order no.
M: Mounting plate, 1.5 mm	22000600
F: Set of rubber feet = 4 pcs	22003300
WL: Set of wall brackets = 4 pcs	22004900
TS 15: Top hat rail DIN EN 60715 TH15	22002000
TS 32: G-rail DIN EN 60715 G 32	22002010
TS 35: Top hat rail DIN EN 60715 TH35	22002020



M/T 219

* = Dimension reduced at bottom due to conical form.
Tolerances to DIN 16901-130.

cylinder screw M4 x 28/10 similar to DIN EN ISO 7045

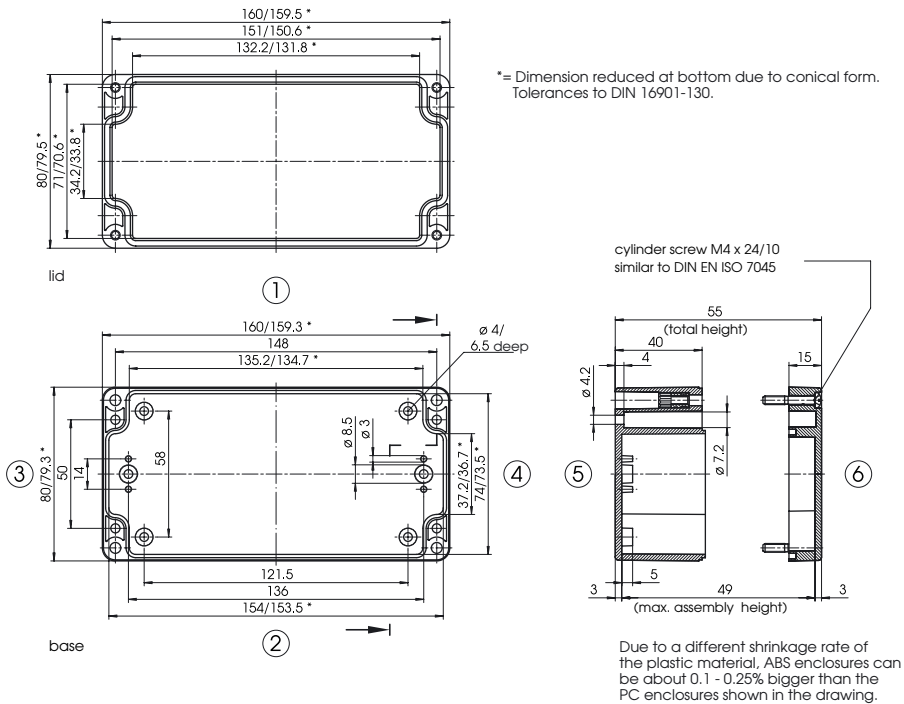


Due to a different shrinkage rate of the plastic material, ABS enclosures can be about 0.1 - 0.25% bigger than the PC enclosures shown in the drawing.

Z-2501105

Euromas-Polycarbonate/ABS

M/T 220



Order designation

Polycarbonate enclosures	Order no.
M 220	02220000
M 220 G	02220100

(G = with clear lid)

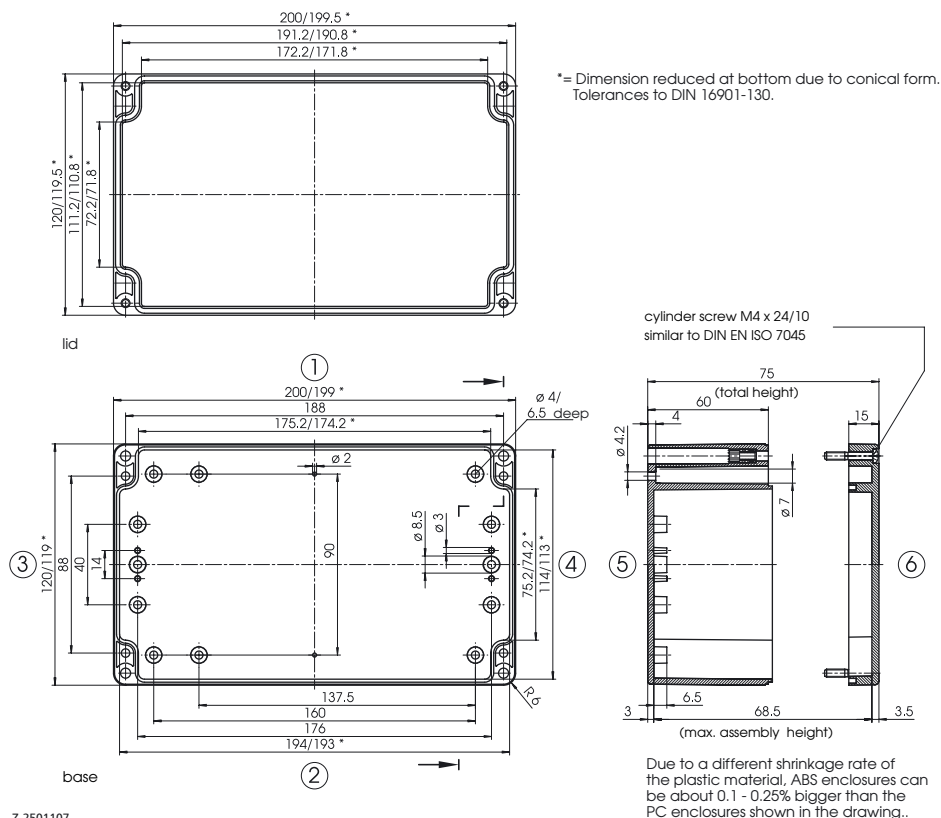
ABS enclosures	Order no.
T 220	03220000
T 220 SV*	03220400

(SV = quick-release fastening)
* available on request

Accessories (additional charge)	Order no.
M: Mounting plate, 1.5 mm	22000600
RD: Set of knurled screws = 4 pcs	22003100
F: Set of rubber feet = 4 pcs	22003300
WL: Set of wall brackets = 4 pcs	22004900
TS 15: Top hat rail DIN EN 60715 TH15	22002000
TS 32: G-rail DIN EN 60715 G 32	22002010
TS 35: Top hat rail DIN EN 60715 TH35	22002020

Z-2501106

M/T 221



Order designation

Polycarbonate enclosures	Order no.
M 221	02221000
M 221 G	02221100

(G = with clear lid)

ABS enclosures	Order no.
T 221	03221000
T 221 SV*	03221400

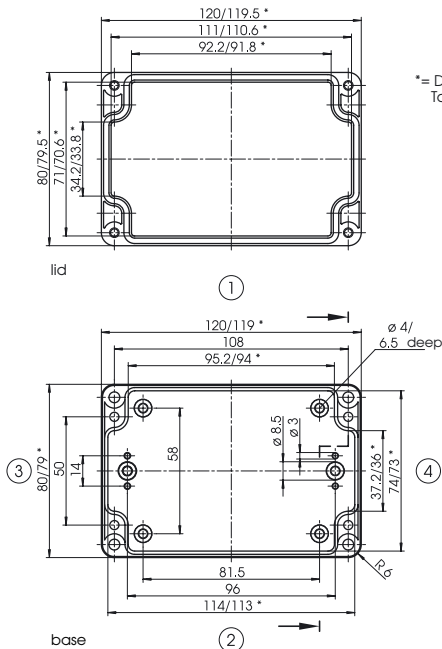
(SV = quick-release fastening)
* available on request

Accessories (additional charge)	Order no.
M: Mounting plate, 2.0 mm	22000700
RD: Set of knurled screws = 4 pcs	22003100
F: Set of rubber feet = 4 pcs	22003300
WL: Set of wall brackets = 4 pcs	22004900
TS 15: Top hat rail DIN EN 60715 TH15	22002100
TS 32: G-rail DIN EN 60715 G 32	22002130
TS 35: Top hat rail DIN EN 60715 TH35	22002120

Z-2501107

Euromas-Polycarbonate/ABS

M/T 226



*= Dimension reduced at bottom due to conical form. Tolerances to DIN 16901-130.

Due to a different shrinkage rate of the plastic material, ABS enclosures can be about 0.1 - 0.25% bigger than the PC enclosures shown in the drawing.

cylinder screw M4 x 24/10 similar to DIN EN ISO 7045

Order designation

Polycarbonate enclosures	Order no.
M 226	02226000
M 226 G	02226100

(G = with clear lid)

ABS enclosures	Order no.
T 226	03226000
T 226 SV*	03226400

(SV = quick-release fastening)

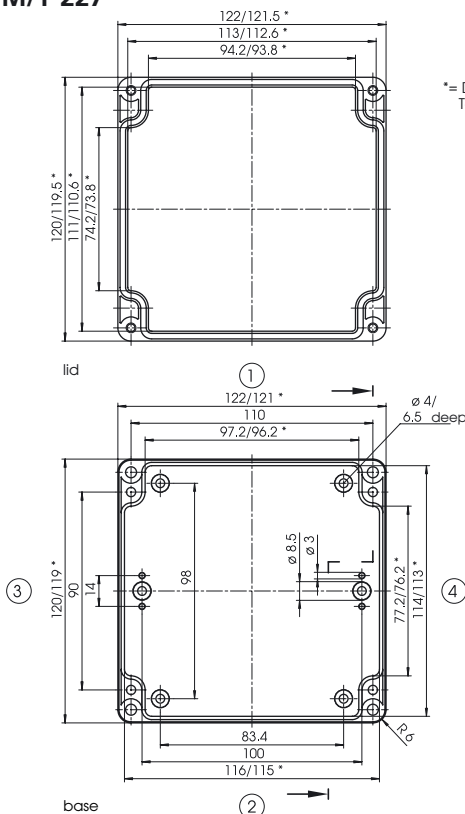
* available on request

Accessories (additional charge)

Accessories (additional charge)	Order no.
M: Mounting plate, 1.5 mm	22000400
RD: Set of knurled screws = 4 pcs	22003100
F: Set of rubber feet = 4 pcs	22003300
WL: Set of wall brackets = 4 pcs	22004900
TS 15: Top hat rail DIN EN 60715 TH15	22001900
TS 35: Top hat rail DIN EN 60715 TH35	22001910

Z-2501110

M/T 227



*= Dimension reduced at bottom due to conical form. Tolerances to DIN 16901-130..

Due to a different shrinkage rate of the plastic material, ABS enclosures can be about 0.1 - 0.25% bigger than the PC enclosures shown in the drawing.

cylinder screw M4 x 24/10 similar DIN EN ISO 7045

Order designation

Polycarbonate enclosures	Order no.
M 227	02227000
M 227 G	02227100

(G = with clear lid)

ABS enclosures	Order no.
T 227	03227000
T 227 SV*	03227400

(SV = quick-release fastening)

* available on request

Accessories (additional charge)

Accessories (additional charge)	Order no.
M: Mounting plate, 2.0 mm	22000500
RD: Set of knurled screws = 4 pcs	22003100
F: Set of rubber feet = 4 pcs	22003300
WL: Set of wall brackets = 4 pcs	22004900
TS 15: Top hat rail DIN EN 60715 TH15	22001900
TS 35: Top hat rail DIN EN 60715 TH35	22001910

Z-2501111

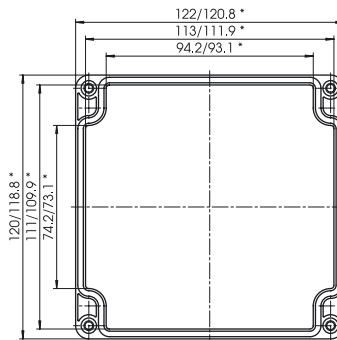
Order designation

Polycarbonate enclosures	Order no.
M 228	02228000
M 228 G	02228100
(G = with clear lid)	

ABS enclosure	Order no.
T 228	03228000

Accessories (additional charge)

M: Mounting plate, 2.0 mm	2200500
F: Set of rubber feet = 4 pcs	22003300
WL: Set of wall brackets = 4 pcs	22004900
TS 15: Top hat rail DIN EN 60715 TH15	22001900
TS 35: Top hat rail DIN EN 60715 TH35	22001910



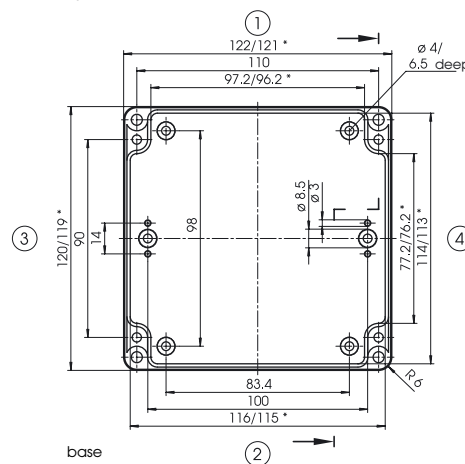
lid

M/T 228

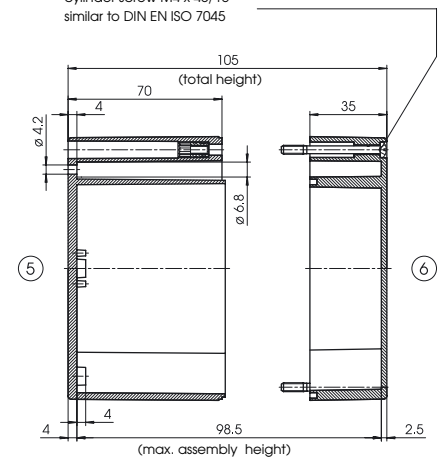
*= Dimension reduced at bottom due to conical form. Tolerances to DIN 16901-130.

Due to a different shrinkage rate of the plastic material, ABS enclosures can be about 0.1 - 0.25% bigger than the PC enclosures shown in the drawing.

cylinder screw M4 x 45/10 similar to DIN EN ISO 7045



base



Z-2501112

Order designation

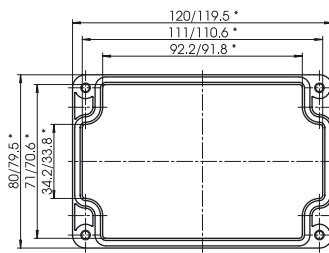
Polycarbonate enclosure	Order no.
M 230	02230000

ABS enclosures	Order no.
T 230	03230000
T 230 SV*	03230400

(SV = quick-release fastening)
* available on request

Accessories (additional charge)

M: Mounting plate, 1.5 mm	2200400
F: Set of rubber feet = 4 pcs	22003300
WL: Set of wall brackets = 4 pcs	22004900
TS 15: Top hat rail DIN EN 60715 TH15	22001900
TS 35: Top hat rail DIN EN 60715 TH35	22001910



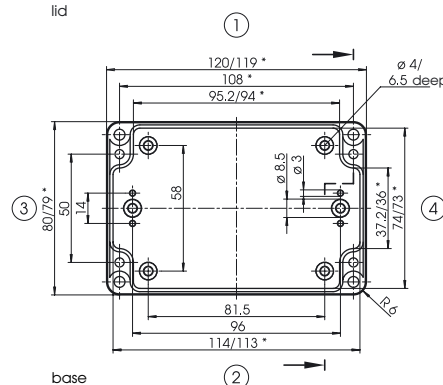
lid

M/T 230

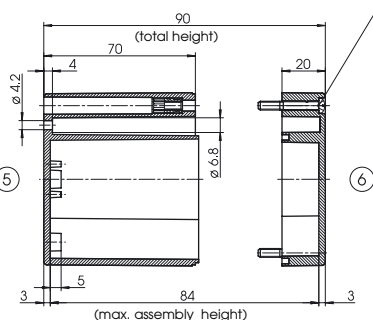
*= Dimension reduced at bottom due to conical form. Tolerances to DIN 16901-130.

Due to a different shrinkage rate of the plastic material, ABS enclosures can be about 0.1 - 0.25% bigger than the PC enclosures shown in the drawing.

cylinder screw M4 x 28/10 similar to DIN EN ISO 7045



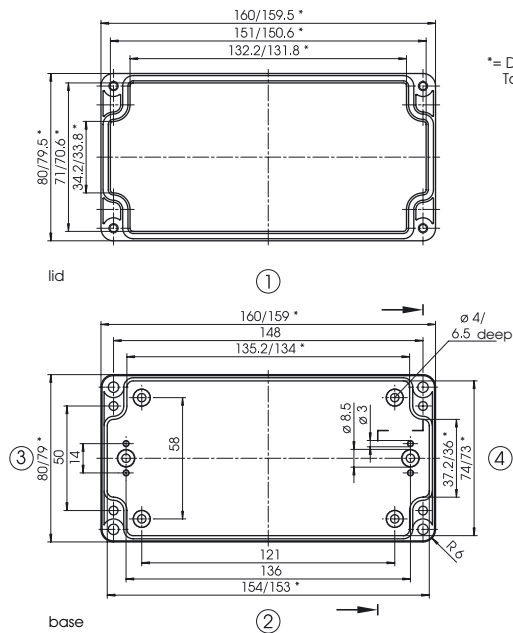
base



Z-2501113

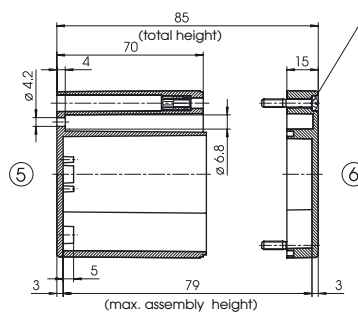
Euromas-Polycarbonate/ABS

M/T 231



*= Dimension reduced at bottom due to conical form.
Tolerances to DIN 16901-130.

cylinder screw M4 x 24/10
similar to DIN EN ISO 7045



Due to a different shrinkage rate of the plastic material, ABS enclosures can be about 0.1 - 0.25% bigger than the PC enclosures shown in the drawing.

Z-2501114

Order designation

Polycarbonate enclosures	Order no.
M 231	02231000
M 231 G	02231100

(G = with clear lid)

ABS enclosures	Order no.
T 231	03231000
T 231 SV*	03231400

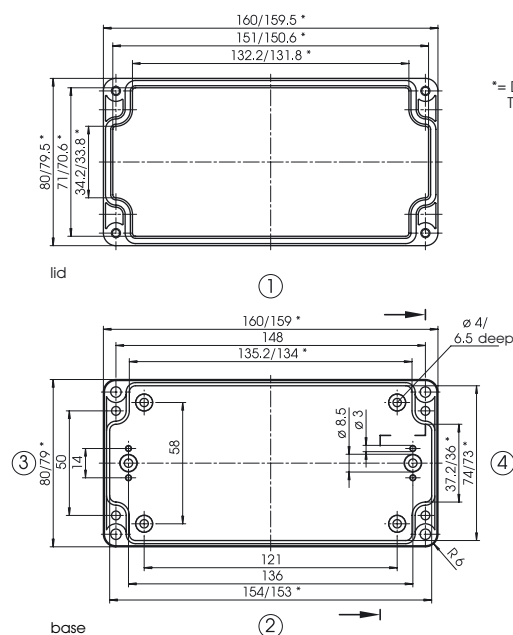
(SV = quick-release fastening)

* available on request

Accessories (additional charge)

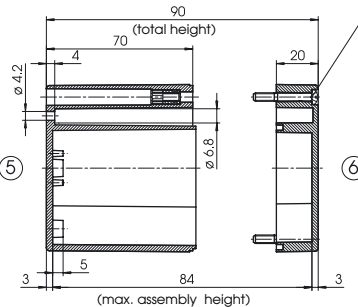
Accessories	Order no.
M: Mounting plate, 1.5 mm	22000600
RD: Set of knurled screws = 4 pcs	22003100
F: Set of rubber feet = 4 pcs	22003300
WL: Set of wall brackets = 4 pcs	22004900
TS 15: Top hat rail DIN EN 60715 TH15	22002000
TS 32: G-rail DIN EN 60715 G 32	22002010
TS 35: Top hat rail DIN EN 60715 TH35	22002020

M/T 235



*= Dimension reduced at bottom due to conical form.
Tolerances to DIN 16901-130.

cylinder screw M4 x 28/10
similar to DIN EN ISO 7045



Due to a different shrinkage rate of the plastic material, ABS enclosures can be about 0.1 - 0.25% bigger than the PC enclosures shown in the drawing.

Z-2501115

Order designation

Polycarbonate enclosure	Order no.
M 235	02235000

ABS enclosures	Order no.
T 235	03235000
T 235 SV*	03235400

(SV = quick-release fastening)

* available on request

Accessories (additional charge)

Accessories	Order no.
M: Mounting plate, 1.5 mm	22000600
F: Set of rubber feet = 4 pcs	22003300
WL: Set of wall brackets = 4 pcs	22004900
TS 15: Top hat rail DIN EN 60715 TH15	22002000
TS 32: G-rail DIN EN 60715 G 32	22002010
TS 35: Top hat rail DIN EN 60715 TH35	22002020

Order designation

Polycarbonate enclosures	Order no.
M 237	02237000
M 237 G	02237100

(G = with clear lid)

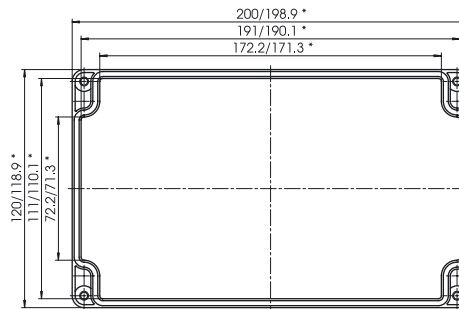
ABS enclosures	Order no.
T 237	03237000
T 237 SV*	03237400

(SV = quick-release fastening)

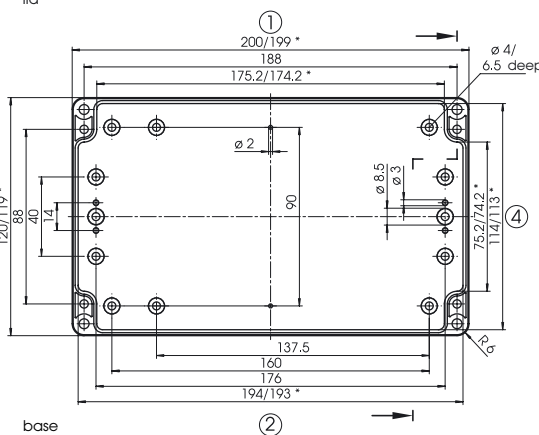
* available on request

Accessories (additional charge)

Order no.	Order no.
M: Mounting plate, 2.0 mm	22000700
F: Set of rubber feet = 4 pcs	22003300
WL: Set of wall brackets = 4 pcs	22004900
TS 15: Top hat rail DIN EN 60715 TH15	22002100
TS 32: G-rail DIN EN 60715 G 32	22002130
TS 35: Top hat rail DIN EN 60715 TH35	22002120



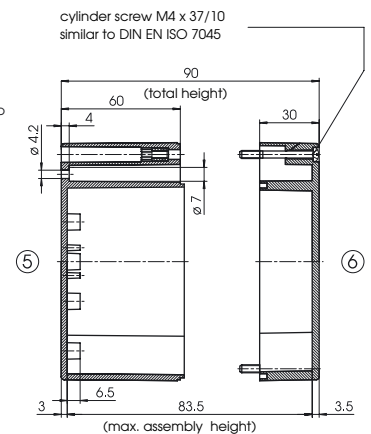
lid



base

M/T 237

* = Dimension reduced at bottom due to conical form. Tolerances to DIN 16901-130.



Due to a different shrinkage rate of the plastic material, ABS enclosures can be about 0.1 - 0.25% bigger than the PC enclosures shown in the drawing.

Z-2501116

Order designation

Polycarbonate enclosures	Order no.
M 238	02238000
M 238 G	02238100

(G = with clear lid)

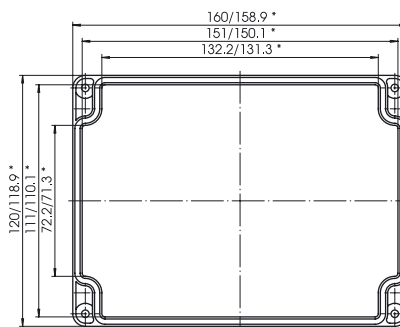
ABS enclosures	Order no.
T 238	03238000
T 238 SV*	03238400

(SV = quick-release fastening)

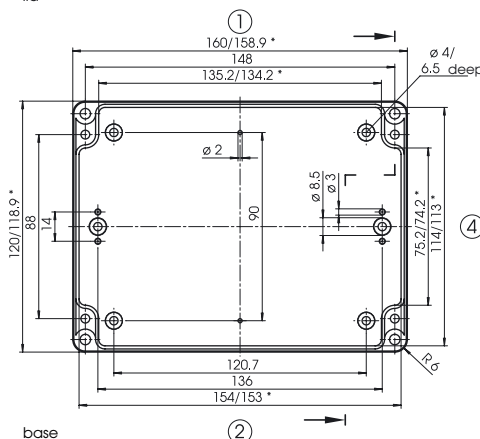
* available on request

Accessories (additional charge)

Order no.	Order no.
M: Mounting plate, 2.0 mm	22001100
F: Set of rubber feet = 4 pcs	22003300
WL: Set of wall brackets = 4 pcs	22004900
TS 15: Top hat rail DIN EN 60715 TH15	22002000
TS 32: G-rail DIN EN 60715 G 32	22002010
TS 35: Top hat rail DIN EN 60715 TH35	22002020



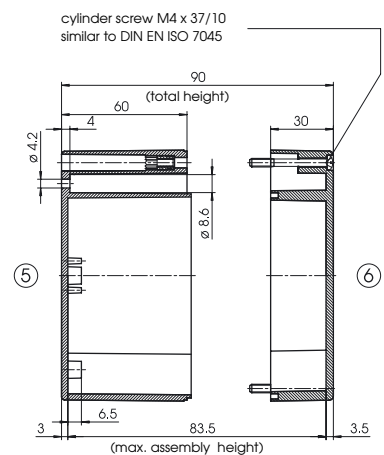
lid



base

M/T 238

* = Dimension reduced at bottom due to conical form. Tolerances to DIN 16901-130.

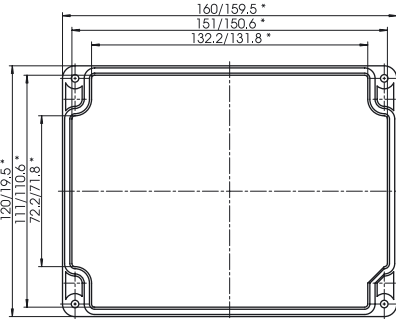


Due to a different shrinkage rate of the plastic material, ABS enclosures can be about 0.1 - 0.25% bigger than the PC enclosures shown in the drawing.

Z-2501117

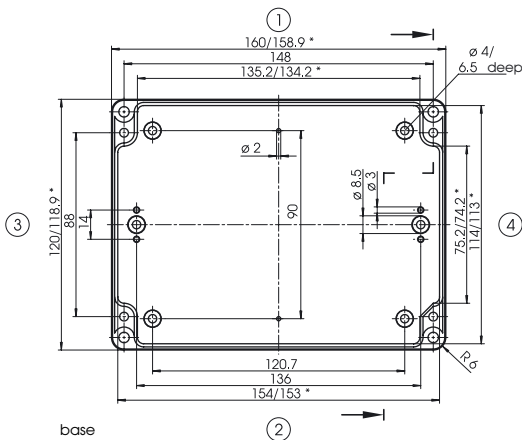
Euromas-Polycarbonate/ABS

M/T 2381



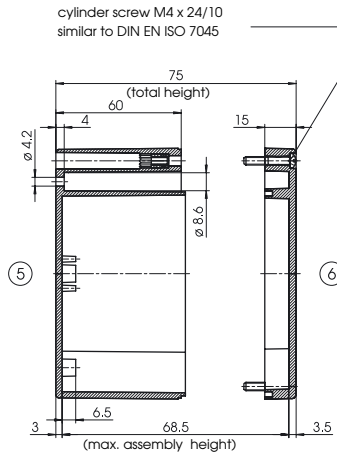
lid

* = Dimension reduced at bottom due to conical form.
Tolerances to DIN 16901-130.



base

Z-2502157



Due to a different shrinkage rate of the plastic material, ABS enclosures can be about 0.1 - 0.25% bigger than the PC enclosures shown in the drawing.

Order designation

Polycarbonate enclosures	Order no.
M 2381	02238200
M 2381 G	02238300

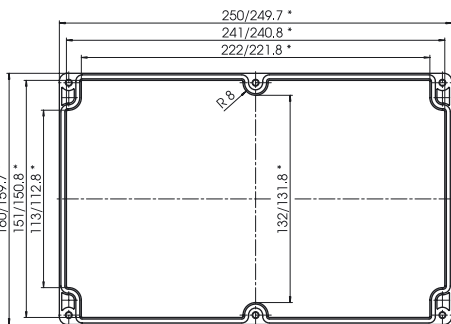
(G = with clear lid)

ABS enclosure	Order no.
T 2381	03238200

Accessories (additional charge)

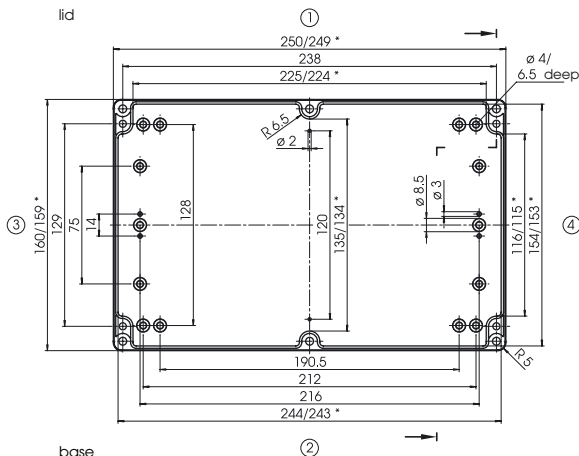
Accessories (additional charge)	Order no.
M: Mounting plate, 2.0 mm	22001100
RD: Set of knurled screws = 4 pcs	22003200
F: Set of rubber feet = 4 pcs	22003300
WL: Set of wall brackets = 4 pcs	22004900
TS 15: Top hat rail DIN EN 60715 TH15	22002000
TS 32: G-rail DIN EN 60715 G 32	22002010
TS 35: Top hat rail DIN EN 60715 TH35	22002020

M/T 240



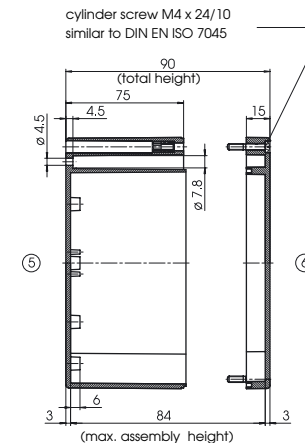
lid

* = Dimension reduced at bottom due to conical form.
Tolerances to DIN 16901-130.



base

Z-2501118



Due to a different shrinkage rate of the plastic material, ABS enclosures can be about 0.1 - 0.25% bigger than the PC enclosures shown in the drawing.

Order designation

Polycarbonate enclosures	Order no.
M 240	02240000
M 240 G	02240100

(G = with clear lid)

ABS enclosures	Order no.
T 240	03240000
T 240 SV*	03240400

(SV = quick-release fastening)
* available on request

Accessories (additional charge)

Accessories (additional charge)	Order no.
M: Mounting plate, 2.5 mm	22000900
RD: Set of knurled screws = 4 pcs	22003200
F: Set of rubber feet = 4 pcs	22003300
WL: Set of wall brackets = 4 pcs	22004900
TS 15: Top hat rail DIN EN 60715 TH15	22002402
TS 32: G-rail DIN EN 60715 G 32	22002300
TS 35: Top hat rail DIN EN 60715 TH35	22002310

Order designation

Polycarbonate enclosures	Order no.
M 2401	02240200
M 2401 G	02240300

(G = with clear lid)

ABS enclosures	Order no.
T 2401	03240200
T 2401 SV*	03240240

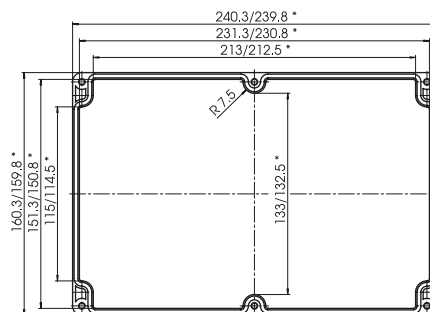
(SV = quick-release fastening)

* available on request

Accessories (additional charge) Order no.

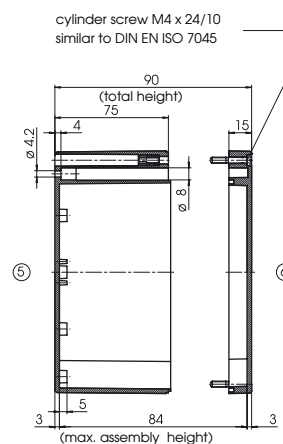
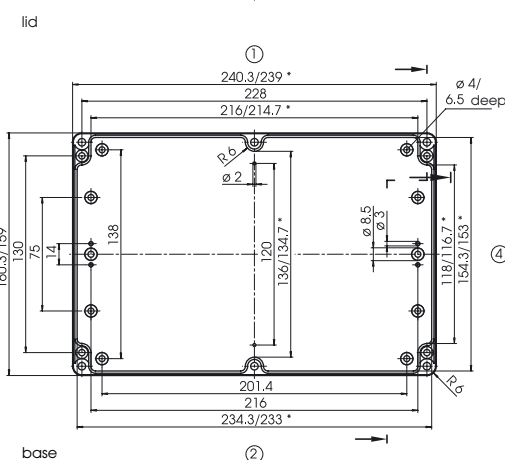
M: Mounting plate, 2.5 mm	22001000
RD: Set of knurled screws = 4 pcs	22003200
F: Set of rubber feet = 4 pcs	22003300
WL: Set of wall brackets = 4 pcs	22004900
TS 15: Top hat rail DIN EN 60715 TH15	22002402
TS 32: G-rail DIN EN 60715 G 32	22002400
TS 35: Top hat rail DIN EN 60715 TH35	22002401

M/T 2401



*= Dimension reduced at bottom due to conical form. Tolerances to DIN 16901-130.

Due to a different shrinkage rate of the plastic material, ABS enclosures can be about 0.1 - 0.25% bigger than the PC enclosures shown in the drawing.



Z-2501119

Order designation

Polycarbonate enclosure	Order no.
M 241	02241000

ABS enclosures	Order no.
T 241	03241000
T 241 SV*	03241400

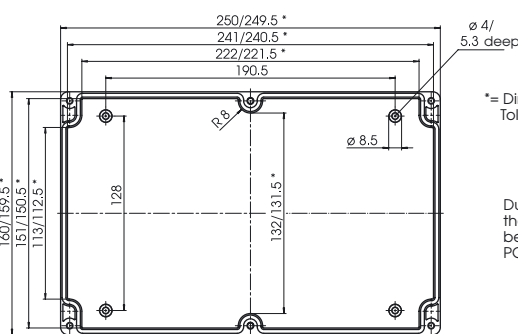
(SV = quick-release fastening)

* available on request

Accessories (additional charge) Order no.

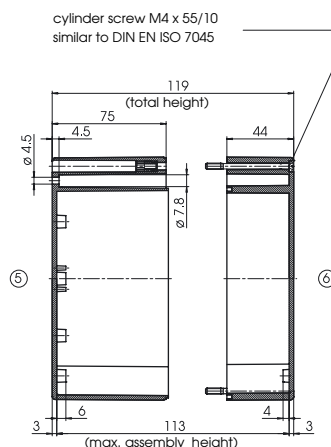
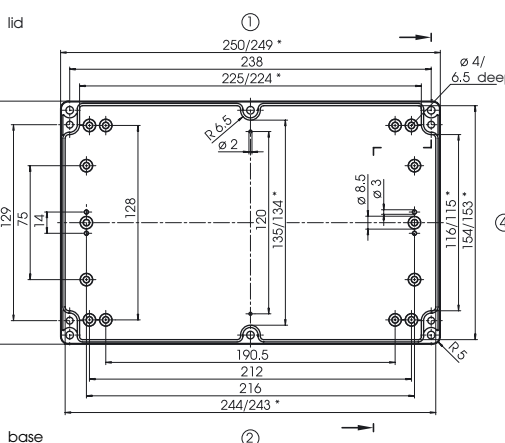
M: Mounting plate, 2.5 mm	22000900
RD: Set of knurled screws = 4 pcs	22003310
F: Set of rubber feet = 4 pcs	22003300
WL: Set of wall brackets = 4 pcs	22004900
TS 15: Top hat rail DIN EN 60715 TH15	22002402
TS 32: G-rail DIN EN 60715 G 32	22002300
TS 35: Top hat rail DIN EN 60715 TH35	22002310

M/T 241



*= Dimension reduced at bottom due to conical form. Tolerances to DIN 16901-130.

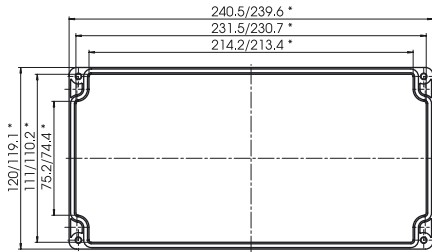
Due to a different shrinkage rate of the plastic material, ABS enclosures can be about 0.1 - 0.25% bigger than the PC enclosures shown in the drawing.



Z-2501120

Euromas-Polycarbonate/ABS

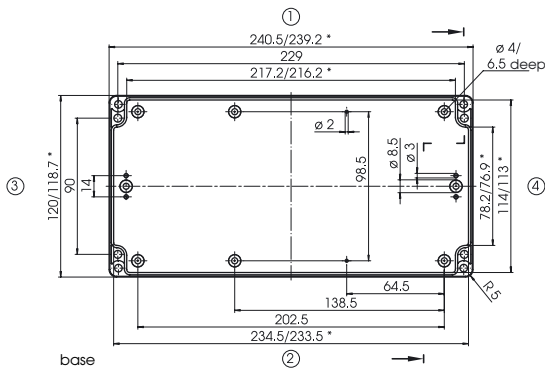
M/T 242



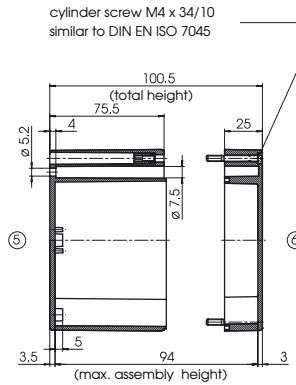
lid

*= Dimension reduced at bottom due to conical form. Tolerances to DIN 16901-130.

Due to a different shrinkage rate of the plastic material, ABS enclosures can be about 0.1 - 0.25% bigger than the PC enclosures shown in the drawing.



base



cylinder screw M4 x 34/10 similar to DIN EN ISO 7045

Order designation

Polycarbonate enclosures	Order no.
M 242	02242000
M 242 G	02242100

(G = with clear lid)

ABS enclosures	Order no.
T 242	03242000
T 242 SV*	03242400

(SV = quick-release fastening)

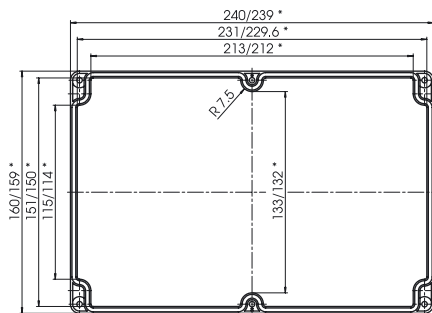
* available on request

Accessories (additional charge)

Accessories	Order no.
M: Mounting plate, 2.0 mm	22001200
F: Set of rubber feet = 4 pcs	22003300
WL: Set of wall brackets = 4 pcs	22004900
TS 15: Top hat rail DIN EN 60715 TH15	22002402
TS 32: G-rail DIN EN 60715 G 32	22002400
TS 35: Top hat rail DIN EN 60715 TH35	22002401

Z-2501121

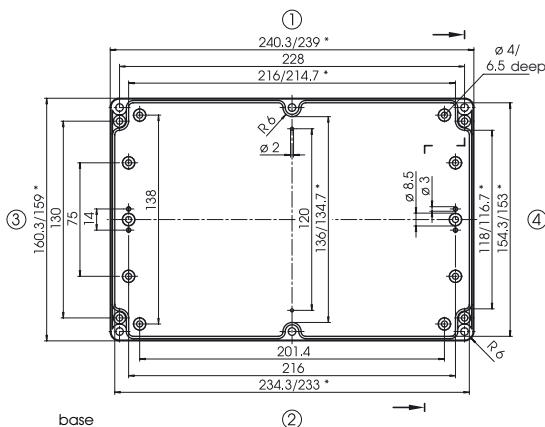
M/T 243



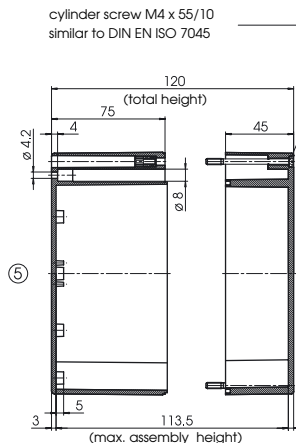
lid

*= Dimension reduced at bottom due to conical form. Tolerances to DIN 16901-130.

Due to a different shrinkage rate of the plastic material, ABS enclosures can be about 0.1 - 0.25% bigger than the PC enclosures shown in the drawing.



base



cylinder screw M4 x 55/10 similar to DIN EN ISO 7045

Order designation

Polycarbonate enclosures	Order no.
M 243	02243000
M 243 G	02243100

(G = with clear lid)

ABS enclosures	Order no.
T 243	03243000
T 243 SV*	03243400

(SV = quick-release fastening)

* available on request

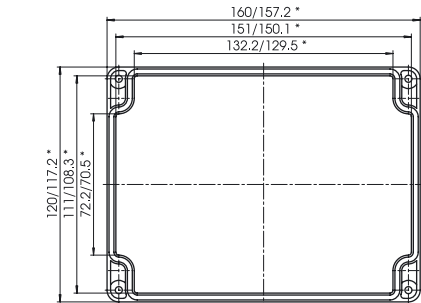
Accessories (additional charge)

Accessories	Order no.
M: Mounting plate, 2.5 mm	22001000
RD: Set of knurled screws = 4 pcs	22003310
F: Set of rubber feet = 4 pcs	22003300
WL: Set of wall brackets = 4 pcs	22004900
TS 15: Top hat rail DIN EN 60715 TH15	22002402
TS 32: G-rail DIN EN 60715 G 32	22002400
TS 35: Top hat rail DIN EN 60715 TH35	22002401

Z-2501122

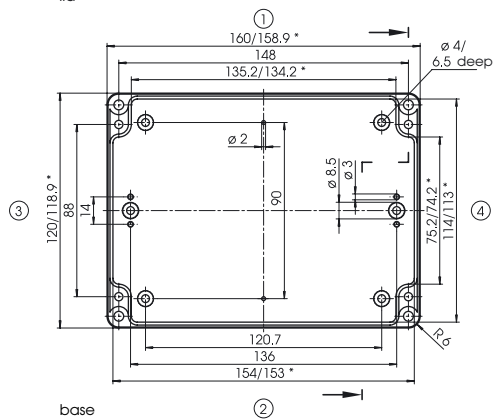
Euromas-Polycarbonate/ABS

M/T 246



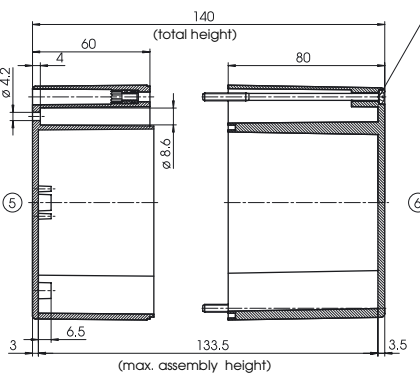
lid

*= Dimension reduced at bottom due to conical form. Tolerances to DIN 16901-130.



base

cylinder screw M4 x 90/22 similar to DIN EN ISO 7045



Due to a different shrinkage rate of the plastic material, ABS enclosures can be about 0.1 - 0.25% bigger than the PC enclosures shown in the drawing.

Order designation

Polycarbonate enclosures	Order no.
M 246	02246000
M 246 G	02246100

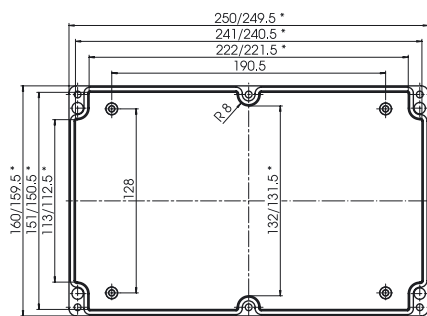
(G = with clear lid)

ABS enclosure	Order no.
T 246	03246000

Accessories (additional charge)

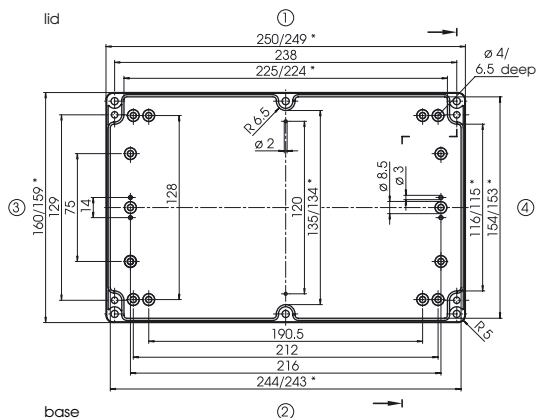
Accessories	Order no.
M: Mounting plate, 2.0 mm	22001100
F: Set of rubber feet = 4 pcs	22003300
WL: Set of wall brackets = 4 pcs	22004900
TS 15: Top hat rail DIN EN 60715 TH15	22002000
TS 32: G-rail DIN EN 60715 G 32	22002010
TS 35: Top hat rail DIN EN 60715 TH35	22002020

M/T 250



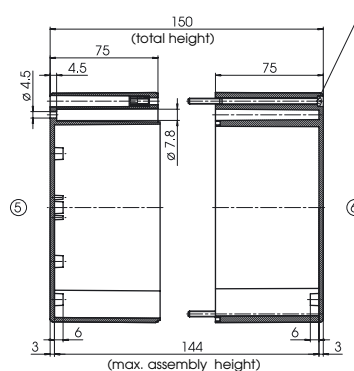
lid

*= Dimension reduced at bottom due to conical form. Tolerances to DIN 16901-130.



base

cylinder screw M4 x 90/22 similar to DIN EN ISO 7045



Due to a different shrinkage rate of the plastic material, ABS enclosures can be about 0.1 - 0.25% bigger than the PC enclosures shown in the drawing.

Order designation

Polycarbonate enclosure	Order no.
M 250	02250000

ABS enclosure	Order no.
T 250	03250000

Accessories (additional charge)

Accessories	Order no.
M: Mounting plate, 2.5 mm	22000900
F: Set of rubber feet = 4 pcs	22003300
WL: Set of wall brackets = 4 pcs	22004900
TS 15: Top hat rail DIN EN 60715 TH15	22002402
TS 32: G-rail DIN EN 60715 G 32	22002300
TS 35: Top hat rail DIN EN 60715 TH35	22002310

Z-2501126

Order designation

Polycarbonate enclosure	Order no.
M 251	02251000

ABS enclosures

T 251	Order no.
03251000	
T 251 SV*	03251400

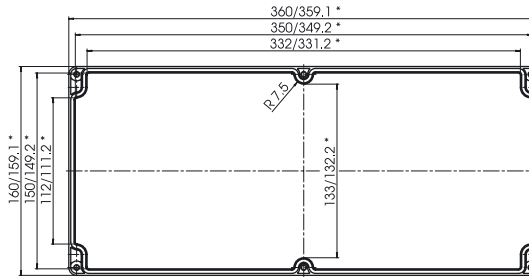
(SV = quick-release fastening)

* available on request

Accessories (additional charge)

M: Mounting plate, 2.5 mm	Order no.	22001400
F: Set of rubber feet = 4 pcs	22003300	
WL: Set of wall brackets = 4 pcs	22004900	
TS 15: Top hat rail DIN EN 60715 TH15	22002820	
TS 32: G-rail DIN EN 60715 G 32	22002800	
TS 35: Top hat rail DIN EN 60715 TH35	22002810	

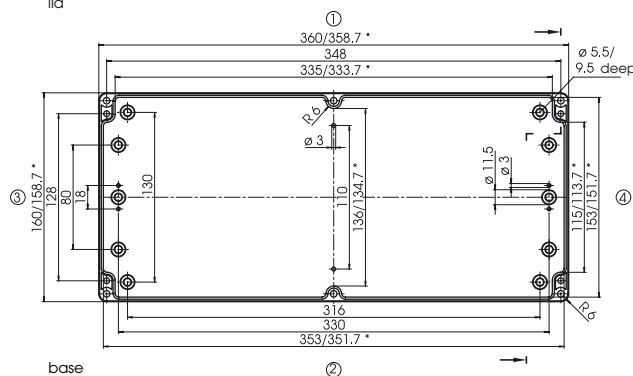
M/T 251



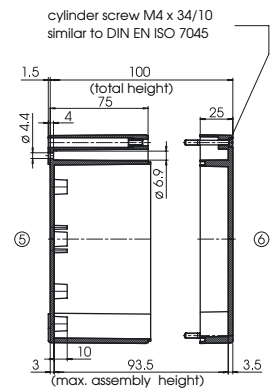
* = Dimension reduced at bottom due to conical form. Tolerances to DIN 16901-130.

Due to a different shrinkage rate of the plastic material, ABS enclosures can be about 0.1 - 0.25% bigger than the PC enclosures shown in the drawing.

lid



base



Z-2501127

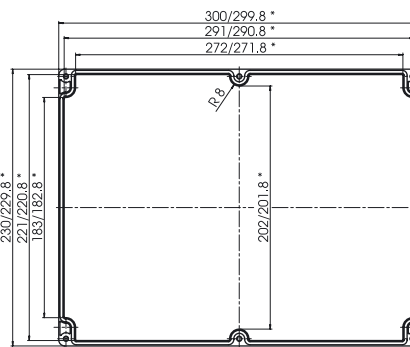
Order designation

Polycarbonate enclosure	Order no.
M 252	02252000

Accessories (additional charge)

M: Mounting plate, 2.0 mm	Order no.	22001500
F: Set of rubber feet = 4 pcs	22003300	
WL: Set of wall brackets = 4 pcs	22004900	
TS 15: Top hat rail DIN EN 60715 TH15	22002920	
TS 32: G-rail DIN EN 60715 G 32	22002900	

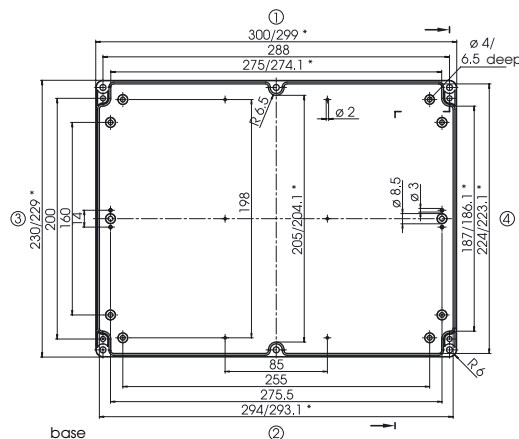
M 252



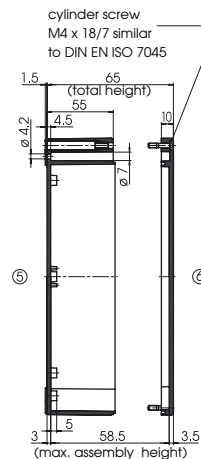
* = Dimension reduced at bottom due to conical form. Tolerances to DIN 16901-130.

Due to a different shrinkage rate of the plastic material, ABS enclosures can be about 0.1 - 0.25% bigger than the PC enclosures shown in the drawing.

lid



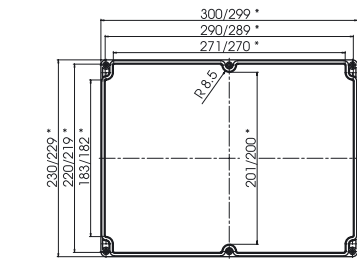
base



Z-2501128

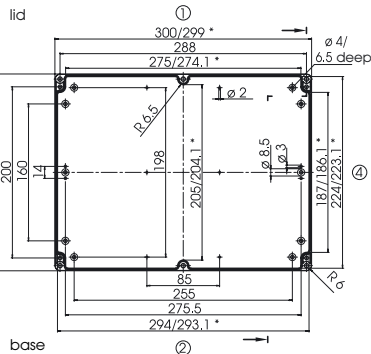
Euromas-Polycarbonate/ABS

M/T 253

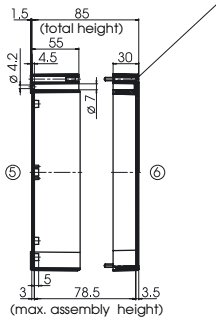


* = Dimension reduced at bottom due to conical form. Tolerances to DIN 16901-130.

Due to a different shrinkage rate of the plastic material, ABS enclosures can be about 0.1 - 0.25% bigger than the PC enclosures shown in the drawing.



cylinder screw M4 x 37/10 similar to DIN EN ISO 7045



Order designation

Polycarbonate enclosures	Order no.
M 253	02253000
M 253 G	02253100

(G = with clear lid)

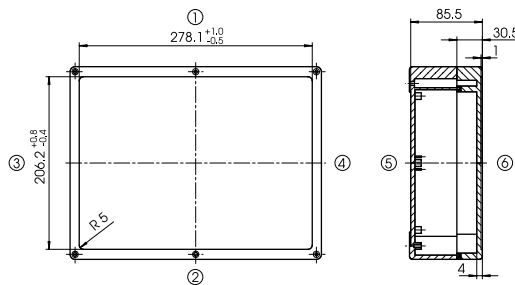
ABS enclosures	Order no.
T 253	03253000
T 253 SV*	03253400
T 253 F**	03253200

(SV = quick-release fastening, F = with membrane keypad area)
* available on request
** available for quantities exceeding 500 units

Accessories (additional charge)	Order no.
M: Mounting plate, 2.0 mm	22001500
F: Set of rubber feet = 4 pcs	22003300
WL: Set of wall brackets = 4 pcs	22004900
TS 15: Top hat rail DIN EN 60715 TH15	22002920
TS 32: G-rail DIN EN 60715 G 32	22002900

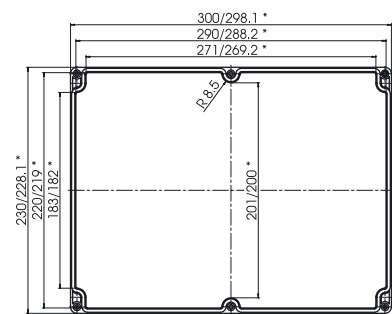
Z-2501129

T 253 F



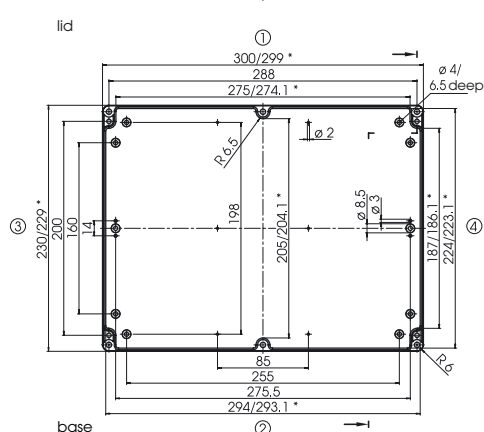
Z-2501137

M/T 254

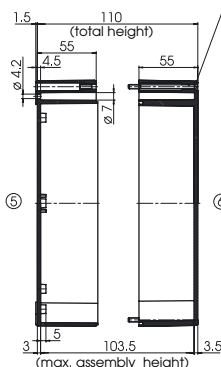


* = Dimension reduced at bottom due to conical form. Tolerances to DIN 16901-130.

Due to a different shrinkage rate of the plastic material, ABS enclosures can be about 0.1 - 0.25% bigger than the PC enclosures shown in the drawing.



cylinder screw M4 x 62/10 similar to DIN EN ISO 7045



Order designation

Polycarbonate enclosures	Order no.
M 254	02254000
M 254 G	02254100

(G = with clear lid)

ABS enclosures	Order no.
T 254	03254000
T 254 SV*	03254400

(SV = quick-release fastening)
* available on request

Accessories (additional charge)	Order no.
M: Mounting plate, 2.0 mm	22001500
F: Set of rubber feet = 4 pcs	22003300
WL: Set of wall brackets = 4 pcs	22004900
TS 15: Top hat rail DIN EN 60715 TH35	22002920
TS 32: G-rail DIN EN 60715 G 32	22002900

Z-2501130

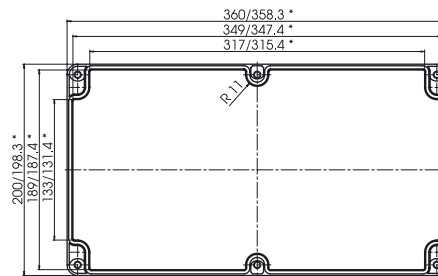
Order designation

Polycarbonate enclosures	Order no.
M 255	02255000
M 255 G	02255100
(G = with clear lid)	

ABS enclosures	Order no.
T 255	03255000
T 255 SV*	03255400
(SV = quick-release fastening)	
* available on request	

Accessories (additional charge)	Order no.
M: Mounting plate, 2.5 mm	22001600
F: Set of rubber feet = 4 pcs	22003300
TS 32: G-rail DIN EN 60715 G 32	22002950
TS 35: Top hat rail DIN EN 60715 TH35	22002951

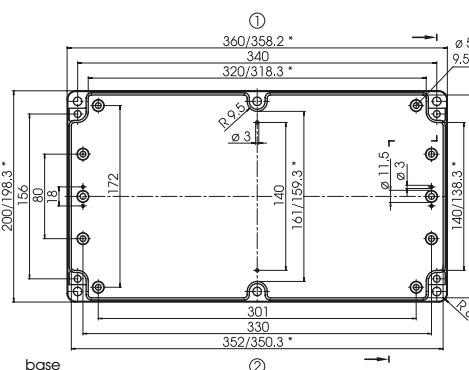
M/T 255



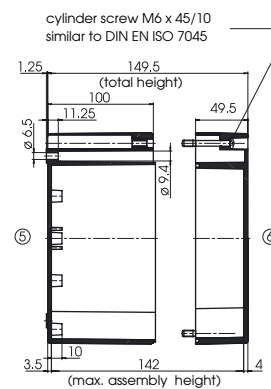
lid

*= Dimension reduced at bottom due to conical form. Tolerances to DIN 16901-130.

Due to a different shrinkage rate of the plastic material, ABS enclosures can be about 0.1 - 0.25% bigger than the PC enclosures shown in the drawing.



base



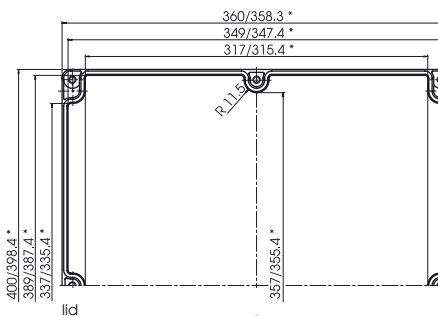
Z-2501131

Order designation

ABS enclosure	Order no.
T 260	03260000

Accessories (additional charge)	Order no.
M: Mounting plate, sheet steel, 2.0 mm	22001610
F: Set of rubber feet = 4 pcs	22003300
TS 32: G-rail DIN EN 60715 G 32	22002960

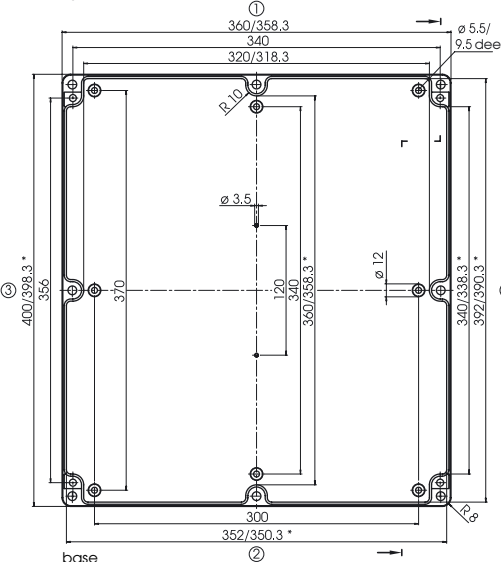
T 260



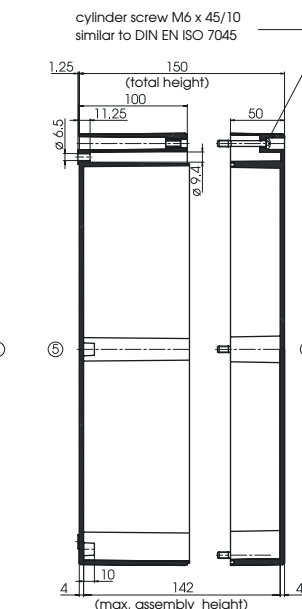
lid

*= Dimension reduced at bottom due to conical form. Tolerances to DIN 16901-130.

Due to a different shrinkage rate of the plastic material, ABS enclosures can be about 0.1 - 0.25% bigger than the PC enclosures shown in the drawing.

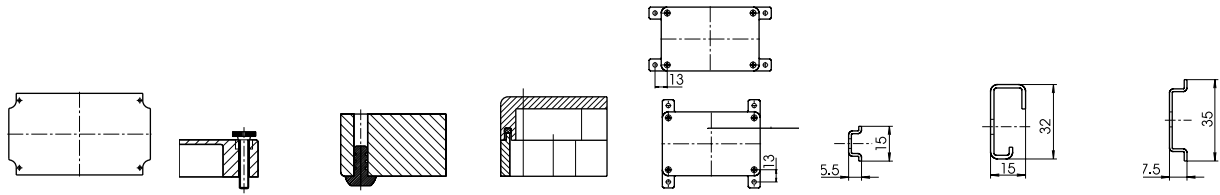


base



Z-2501132

Euromas-Polycarbonate/ABS accessories



Model	M	RD	F	SIL	WL	TS 15	TS 32	TS 35
205	22000100	-	-	-	-	22001800	-	-
206	22000200	-	-	-	-	22001710	-	-
208	-	-	22003300	-	-	-	-	-
210	22000300	22003100	22003300	22003500	22004900	22001700	22001701	22001702
215	22000400	22003100	22003300	22003600	22004900	22001900	-	22001910
216	22000400	-	22003300	22003600	22004900	22001900	-	22001910
217	22000500	22003100	22003300	22003700	22004900	22001900	-	22001910
219	22000600	-	22003300	22003800	22004900	22002000	22002010	22002020
220	22000600	22003100	22003300	22003800	22004900	22002000	22002010	22002020
221	22000700	22003100	22003300	22003900	22004900	22002100	22002110	22002120
223	22000800	22003100	22003300	22005500	22004900	22002100	22002110	22002120
225	22000300	22003100	22003300	22003500	22004900	22001700	22001701	22001702
226	22000400	22003100	22003300	22003600	22004900	22001900	-	22001910
227	22000500	22003100	22003300	22003700	22004900	22001900	-	22001910
228	22000500	-	22003300	22003700	22004900	22001900	-	22001910
230	22000400	-	22003300	22003600	22004900	22001900	-	22001910
231	22000600	22003100	22003300	22003800	22004900	22002000	22002010	22002020
235	22000600	-	22003300	22003800	22004900	22002000	22002010	22002020
237	22000700	-	22003300	22003900	22004900	22002100	22002110	22002120
238	22001100	-	22003300	22004300	22004900	22002000	22002010	22002020
240	22000900	22003200	22003300	22004100	22004900	22002402	22002300	22002310
2401	22001000	22003200	22003300	22004200	22004900	22002402	22002400	22002401
241	22000900	22003310	22003300	22004100	22004900	22002402	22002300	22002310
242	22001200	-	22003300	22004400	22004900	22002402	22002400	22002401
243	22001000	22003310	22003300	22004200	22004900	22002402	22002400	22002401
244	22001300	-	22003300	22004500	-	22002720	22002700	22002710
245	22001300	-	22003300	22004500	-	22002720	22002700	22002710
246	22001100	-	22003300	22004300	22004900	22002000	22002010	22002020
250	22000900	-	22003300	22004100	22004900	22002402	22002300	22002310
251	22001400	-	22003300	22004600	22004900	22002820	22002800	22002810
252	22001500	-	22003300	22004700	22004900	22002920	22002900	-
253	22001500	-	22003300	22004700	22004900	22002920	22002900	-
254	22001500	-	22003300	22004700	22004900	22002920	22002900	-
255	22001600	-	22003300	22004800	-	-	22002950	22002951
260	22001610	-	22003300	-	-	-	22002960	-

M: Mounting plates, laminated paper (Pertinax), galvanised steel for model 260

RD: Set of knurled screws = 4 pcs (cannot be used with SV)

F: Set of rubber feet = 4 pcs

SIL: Lid with silicone seal

WL: Set of wall brackets = 4 pcs

TS 15: Top hat rail DIN EN 60715 TH15

TS 32: G-rail DIN EN 60715 G 32

TS 35: Top hat rail DIN EN 60715 TH35

Threaded inserts for mounting bosses

Boss internal ø x depth	Threaded inserts	Order no.	PU
4 x 6.5	Dodge M 3 x 6.5	59002810	100 pcs
5.4 x 9.5	Dodge M 4 x 9.5	59002820	100 pcs

Cabinet-version:

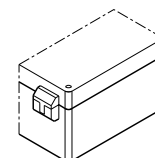
If you want your enclosure(s) fitted with hinges, please order separately:

Order designation	Order no.
SchM: Set of hinges polycarbonate	22006000

Additional charge for fitting.

Assembly instructions:

Put the insert into the boss until it touches the base. Then hammer down the stretcher plate using a pin.



Z-2001663

**Maximal assignment
with terminal blocks**

	Phoenix						Weidmüller				
	MBK 2.5	MBK 3	MBK 5	UK 3 N	UK 5 N	UK 10 N	AKZ 1.5	AKZ 2.5	AKZ 4	SAK 2.5	SAK 4
DIN-rail TS 15	X	X	X				X	X	X		
DIN-rail TS 32				X	X	X				X	X
DIN-rail TS 35				X	X	X					
Bridgeable		X	X	X	X	X	X	X	X	X	X
End angle-piece	2	2	2	2	2	2	2	2	2	2	2
Closing plate	-	-	-	1	1	1	1	1	1	1	1
Connection cross-section (mm ²) fine-strand	1.5	2.5	4	2.5	4	10	1.5	2.5	4	2.5	4
Connection cross-section (mm ²) single wire	2.5	4	4	4	6	16	2.5	4	6	4	10
Nominal voltage (V)	500	500	500	750	750	800	400	250	500	800	800
Rating (A)	26	32	34	34	34	76	17.5	24	32	24	32
Terminal width (mm)	5.2	5.2	6.2	5.2	6.2	10.2	5	5	6	6	6.5

Model	Number per DIN-rail						Number per DIN-rail				
M/T 205	1 x KL16/4 PA-DS terminal block						1 x KL16/4 PA-DS terminal block				
M/T 206	1 x KL16/8 PA-DS terminal block						1 x KL16/8 PA-DS terminal block				
M/T 208	7						7	7			
M/T 210	7	7	5				7	7	6		
M/T 215	14	14	11				14	14	12		
M/T 216	14	14	11				14	14	12		
M/T 217	15	15	12				14	14	12		
M/T 219	22	22	18	22	18	11	22	22	18		
M/T 220	22	22	18				30	22	18		
M/T 221	30	30	24	29	23	15	30	30	25	25	23
M/T 223	30	30	24	29	23	15	7	30	25	25	23
M/T 225	7	7	5	6	5	3	14	7	6	6	5
M/T 226	14	14	11	13	11	7	14	14	12	12	9
M/T 227	15	15	12	14	11	7	14	14	12	12	11
M/T 228	15	15	12	14	11	7	14	14	12	12	11
M/T 230	14	14	11	13	11	7	14	14	12	12	11
M/T 231	22	22	18	21	18	11	21	21	17	17	16
M/T 235	22	22	18	21	18	11	21	21	17	17	16
M/T 237	30	30	24	29	23	15	30	30	25	25	23
M/T 238	22	22	18	21	18	11	21	21	17	17	16
M/T 240	38	38	30	36	30	20	40	40	33	33	30
M/T 2401	38	38	30	36	30	20	40	40	33	33	30
M/T 241	38	38	30	36	30	20	40	40	33	33	30
M/T 242	38	38	30	36	30	20	40	40	33	33	30
M/T 243	38	38	30	36	30	20	40	40	33	33	30
M/T 244	52	52	47	50	45	28	54	54	49	49	43
M/T 245	52	52	47	50	45	28	54	54	49	49	43
M/T 246	22	22	18	21	18	11	21	21	17	17	16
M/T 250	38	38	30	36	32	20	40	40	33	33	30
M/T 251	60	60	50	58	48	30	62	62	52	52	46
M 252	48	48	40	46	40	24	48	48	42		
M/T 253	48	48	40	46	40	24	48	48	42	42	38
M/T 254	48	48	40	46	40	24	48	48	42	42	38
M/T 255	60	60	50	58	48	30	60	60	50	50	45
T 260	60	60	50	58	48	30	60	60	50	50	45