



- Light-weight plastic enclosures for industrial applications with pre-embossed flanges
- Can be combined with other polycarbonate flange enclosures
- Quick release feature with flange quick release system
- Standard and transparent lid options

### Included in delivery

Completely closed enclosure body with pre-embossed flanges to break out, lid with plastic quick release feature; 4 threaded inserts for internal fastening

### Technical data

**Material:**

Polycarbonate

**Colour:**

pebble grey, similar to RAL 7032

**Ingress protection:**

IP 65 to EN 60529

**Impact resistance:**

>7 Joule, EN 50014

**Flammability:**

enclosure: V0 / self-extinguishing, UL 94

transparent lid: V2 / UL 94

**Temperature range:**

enclosure: -40°C to +100°C

transparent lid: -40°C to +100°C

**Insulation:**

full protective insulation acc. to VDE 0100

**Dielectric strength:**

enclosure: >18 KV/mm, DIN 53481

transparent lid: >30 KV/mm, DIN 53481

**Toxicity:**

low halogen

**Surface resistance:**

enclosure: >10<sup>15</sup> Ohm, DIN 53481

# Polycarbonate Flange

## Programme range

Type	Dimensions W x L x H	Flange openings	Enclosure with lid 20 mm	Enclosure with transparent lid 20 mm
17.01	134 x 170 x 130	2	17.01 10 00	17.01 10 10*
17.02	170 x 170 x 130	4	17.02 10 00	17.02 10 10*
17.03	170 x 269 x 130	4	17.03 10 00	17.03 10 10*
17.04	269 x 269 x 130	4	17.04 10 00	17.04 10 10*
17.05	269 x 540 x 130	6	17.05 10 00	17.05 10 10*
17.06	269 x 440 x 130	4	17.06 10 00	-

\* transparent lid on request

## Accessories (depending on type)

Type	DIN rail TS 32	DIN rail TS 35	Earthing rail	Mounting plate
17.01	10.06 17 04	10.06 17 24	10.06 21 00	17.01 60 00
17.02	10.06 17 04	10.06 17 24	10.06 21 00	17.02 60 00
17.03	10.06 17 01	10.06 17 21	10.06 21 01	17.03 60 00
17.04	10.06 17 02	10.06 17 22	10.06 21 01	17.04 60 00
17.05	10.06 17 03	10.06 17 23	10.06 21 02	17.05 60 00
17.06		10.06 17 25	10.06 21 03	17.06 60 00

## Accessories (for all types)

Blind flange I	17.00 31 00
Blind flange II	17.00 32 00
PG flange II, 19 x PG9/PG13,5	17.00 34 00
PG flange II, 16 x PG11/PG16	17.00 35 00
PG flange II, 10 x PG9/PG13,5; 4 x PG11/PG16; 2 x PG21/PG29	17.00 33 00
Connection flange I	17.00 36 00
Connection flange II	17.00 37 00
Mounting brackets (set of 4 pcs.), 2 sets required for type 17.05	17.00 42 00
Additional threaded inserts (set of 10 pcs.)	10.03 50 03
External mounting brackets (set of 4 pcs.)	10.03 11 04
Replacement fastening wedges (set of 10 pcs.)	17.00 41 00
Internal hinges (set of 2 pcs.)	17.00 55 00

## Terminal mounting

	Series terminals									Earth conductor connections									
	Phoenix									Weidmüller									
DIN rail TS 35	X	X	X	X	X	X	X	X	X	X	X	X	X	X	X	X	X	X	X
Voltage (V)	500	800	800	800	1000	1000	1000	1000	1000	500	800	800	800	800	1000	1000			
Current (A)	17	24	32	41	57	76	101	150	24	24	32	41	57	76	125				
Nom. cross section (mm <sup>2</sup> )	1.5	2.5	2.5	4	6	10	16	35	2.5	2.5	4	6	10	16	35				
Terminal (mm)	4.2	5.2	5.2	6.2	8.2	10.2	12.2	15.2	5	5	6	8	10	12	16				
Terminal type																			
Type	UK 1.5 N	UK 2.5 N	UK 3 N	UK 4 N	UK 6 N	UK 10 N	UK 16 N	UK 35	WDU 2.5 N	WDU 2.5	WDU 4	WDU 6	WDU 10	WDU 16	WDU 35				
17.01 10 00	28	22	22	19	14	11	9	7	22	22	19	14	11	9	7				
17.02 10 00	28	22	22	19	14	11	9	7	22	22	19	14	11	9	7				
17.03 10 00	45	37	37	31	23	18	15	12	37	37	31	23	18	15	11				
17.04 10 00	45*	37*	37*	31*	23*	18*	15*	12*	37*	37*	31*	23*	18*	15*	11*				
17.05 10 00	110*	89*	89*	74*	56*	45*	37*	30*	91*	91*	76*	57*	45*	38*	28*				
17.06 10 00	86*	69*	69*	58*	44*	35*	29*	23*	71*	71*	59*	44*	35*	29*	22*				

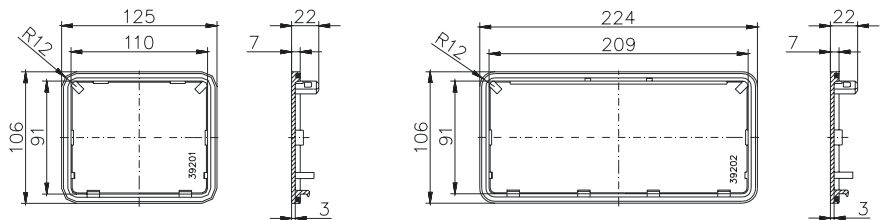
\* 2 DIN rails possible

## Accessories



**Blind flange**

Order No.	version
<b>17.00 31 00</b>	Blind flange I (125 x 106 mm)
<b>17.00 32 00</b>	Blind flange II (224 x 106 mm)



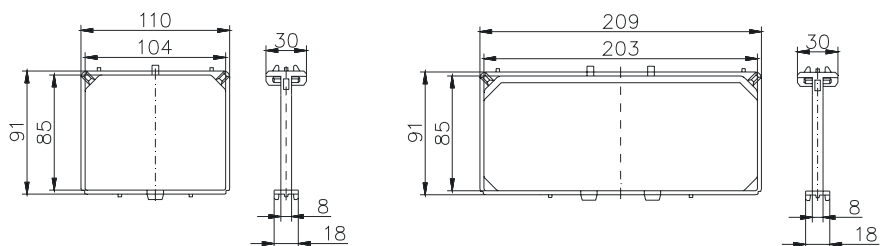
**Threaded flange  
with pre-embossed holes**

Order No.	version
<b>17.00 34 00</b>	19 x PG 9 / PG 13,5
<b>17.00 35 00</b>	16 x PG 11 / PG 16
<b>17.00 33 00</b>	10 x PG 9 / PG 13,5; 4 x PG 11 / PG 16; 2 x PG 21 / PG 29



**Connection flange**  
to connect two polycarbonate flange enclosures with itself

Order No.	version
<b>17.00 36 00</b>	Connection flange I
<b>17.00 37 00</b>	Connection flange II



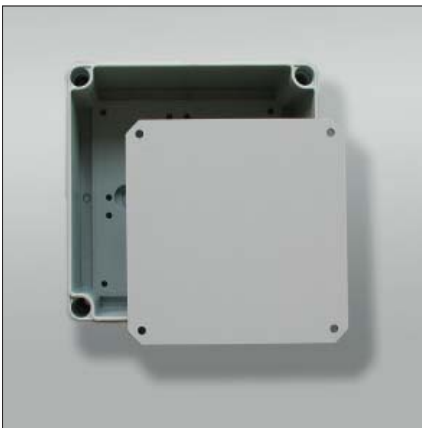
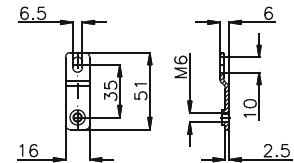
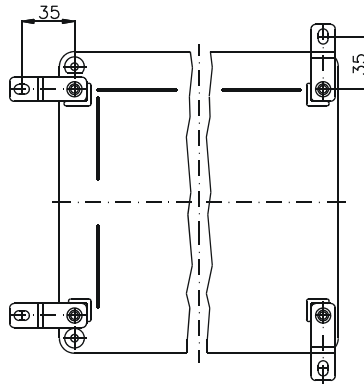
# Polycarbonate Flange

## Accessories



**External mounting brackets**  
set = 4 pcs.

Order No. **10.03 11 04**



**Mounting plates**  
for fitting electro-mechanical components



**Mounting bracket**  
set = 4 pcs.

Order No. **17.00 42 00**

Type: **17.01 10..**

External dimensions: **134 x 170 x 130 mm**

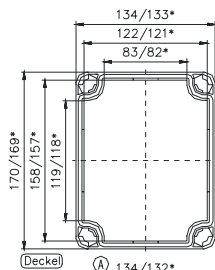
Weight: **790 g**

DIN rail length in mm	max. fitting length in mm	Mounting plate (thickness in mm)	External mounting brackets	Hinged lid	No. of flanges			
TS 35								
140	115	3	•	•	2			

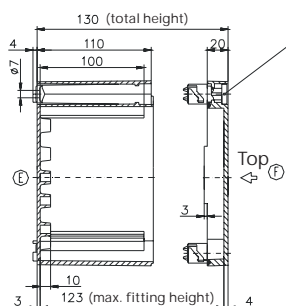
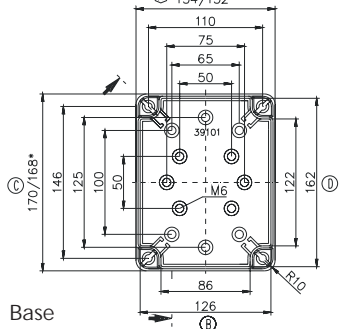
Maximum number of cable glands to **50262\***

M	Corner dim.	Side		PG	Corner dim.	Side		
		A/B	C/D			A/B	C/D	
12	17,25	16	27	7	17,25	16	27	
16	25,30	8	12	9	21,85	12	16	
20	27,60	6	10	11	25,30	8	12	
25	37,95	3	5	13,5	27,60	6	10	
32	48,30	2	4	16	31,05	4	9	
40	60,95	1	2	21	37,95	3	5	
50	69,00	1	1	29	48,30	2	4	
63	74,75	0	1	36	60,95	1	1	
					42	69,00	1	1
					48	74,75	0	1

Lid



\* = Conical form tapering downwards  
Free dimensions-tolerance to DIN 16901 - 130



Type: **17.02 10..**

External dimensions: **170 x 170 x 130 mm**

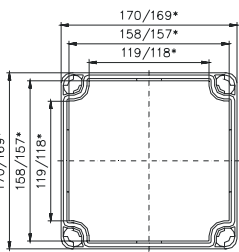
Weight: **910 g**

DIN rail length in mm	max. fitting length in mm	Mounting plate (thickness in mm)	External mounting brackets	Hinged lid	No. of flanges			
TS 35								
140	115	3	•	•	4			

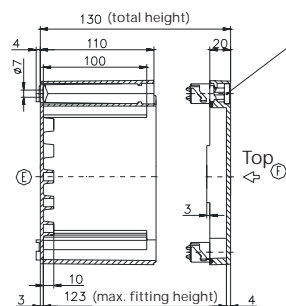
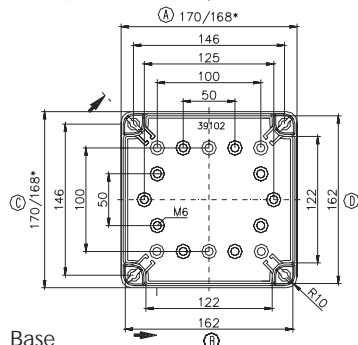
Maximum number of cable glands to **50262\***

M	Corner dim.	Side		PG	Corner dim.	Side		
		A/B	C/D			A/B	C/D	
12	17,25	27	27	7	17,25	27	27	
16	25,30	12	12	9	21,85	16	16	
20	27,60	10	10	11	25,30	12	12	
25	37,95	5	5	13,5	27,60	10	10	
32	48,30	4	4	16	31,05	9	9	
40	60,95	2	2	21	37,95	5	5	
50	69,00	1	1	29	48,30	4	4	
63	74,75	1	1	36	60,95	1	1	
					42	69,00	1	1
					48	74,75	1	1

Lid



\* = Conical form tapering downwards  
Free dimensions-tolerance to DIN 16901 - 130



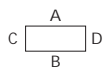
Type: **17.03 10 . .**

External dimensions: **170 x 269 x 130 mm**

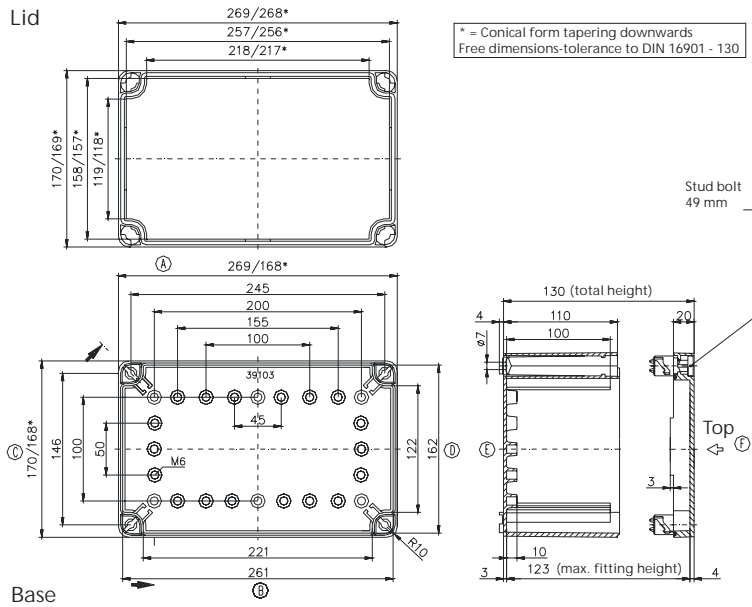
Weight: **1210 g**

DIN rail length in mm	max. fitting length in mm	Mounting plate (thickness in mm)	External mounting brackets	Hinged lid	No. of flanges			
TS 35								
215	190	3	•	•	4			

Maximum number of cable glands to **50262\***



M	Corner dim.	Side		PG	Corner dim.	Side		
		A/B	C*/D*			A/B	C*/D*	
12	17,25	60	27	7	17,25	60	27	
16	25,30	28	12	9	21,85	35	16	
20	27,60	21	10	11	25,30	28	12	
25	37,95	12	5	13,5	27,60	21	10	
32	48,30	8	4	16	31,05	18	9	
40	60,95	4	2	21	37,95	11	5	
50	69,00	3	1	29	48,30	8	4	
63	74,75	2	1	36	60,95	3	1	
					42	69,00	3	1
					48	74,75	2	1



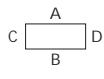
Type: **17.04 10 . .**

External dimensions: **269 x 269 x 130 mm**

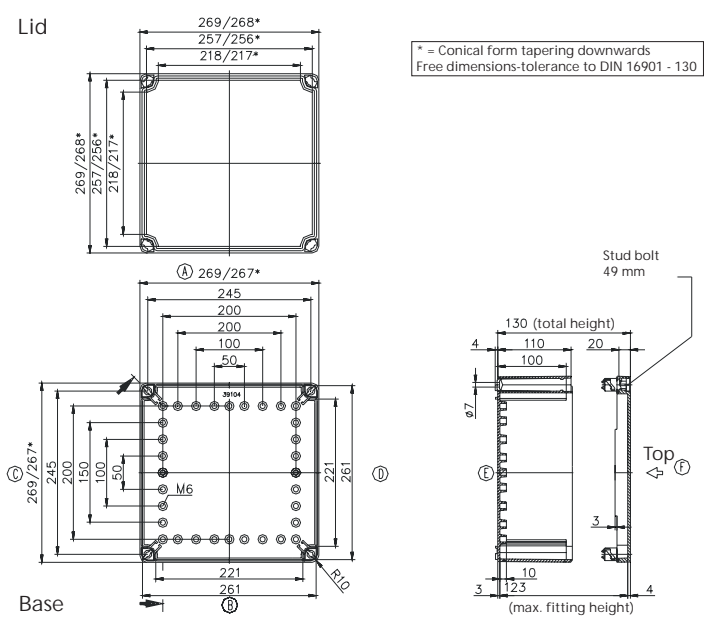
Weight: **1710 g**

DIN rail length in mm	max. fitting length in mm	Mounting plate (thickness in mm)	External mounting brackets	Hinged lid	No. of flanges			
TS 35								
215	190	3	•	•	4			

Maximum number of cable glands to **50262\***



M	Corner dim.	Side		PG	Corner dim.	Side		
		A/B	C/D			A/B	C/D	
12	17,25	60	60	7	17,25	60	60	
16	25,30	28	28	9	21,85	35	35	
20	27,60	21	21	11	25,30	28	28	
25	37,95	12	12	13,5	27,60	21	21	
32	48,30	8	8	16	31,05	18	18	
40	60,95	4	4	21	37,95	11	11	
50	69,00	3	3	29	48,30	8	8	
63	74,75	2	2	36	60,95	3	3	
					42	69,00	3	3
					48	74,75	2	2



Type: **17.05 10 . .**

External dimensions: **269 x 540 x 130 mm**

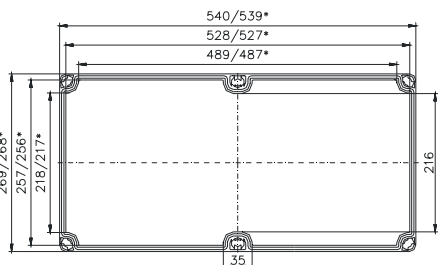
Weight: **3040 g**

DIN rail length in mm	max. fitting length in mm	Mounting plate (thickness in mm)	External mounting brackets	Hinged lid	No. of flanges			
TS 35								
485	450	3	•	•	6			

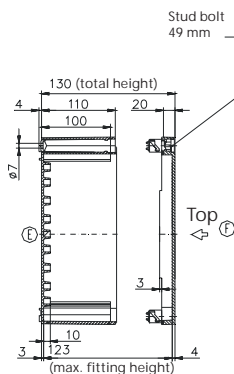
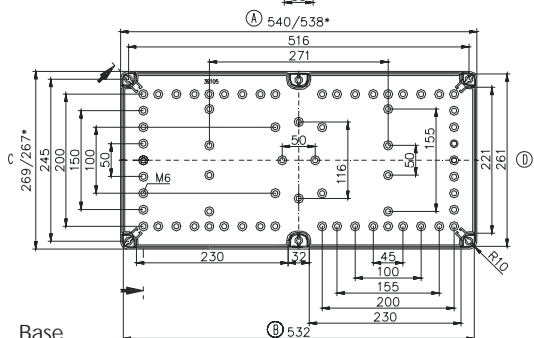
Maximum number of cable glands to **50262\***

M	Corner dim.	Side		PG	Corner dim.	Side	
		A/B	C/D			A/B	C/D
12	17,25	120	60	7	17,25	120	60
16	25,30	54	28	9	21,85	70	35
20	27,60	42	21	11	25,30	56	28
25	37,95	24	12	13,5	27,60	42	21
32	48,30	16	8	16	31,05	36	18
40	60,95	8	4	21	37,95	22	11
50	69,00	6	3	29	48,30	16	8
63	74,75	4	2	36	60,95	6	3
				42	69,00	6	3
				48	74,75	4	2

Lid



\* = Conical form tapering downwards  
Free dimensions-tolerance to DIN 16901 - 130



Base

Type: **17.06 10 . .**

External dimensions: **269 x 440 x 130 mm**

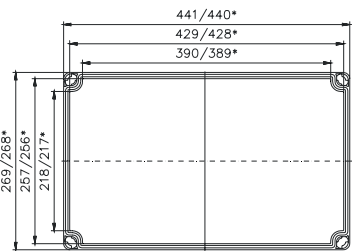
Weight: **2480 g**

DIN rail length in mm	max. fitting length in mm	Mounting plate (thickness in mm)	External mounting brackets	Hinged lid	No. of flanges			
TS 35								
385	350	3	•	•	4			

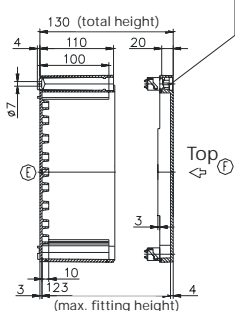
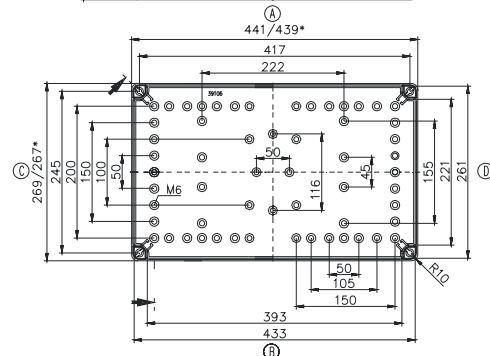
Maximum number of cable glands to **50262\***

M	Corner dim.	Side		PG	Corner dim.	Side	
		A/B	C/D			A/B	C/D
12	17,25	60	60	7	17,25	60	60
16	25,30	28	28	9	21,85	35	35
20	27,60	21	21	11	25,30	28	28
25	37,95	12	12	13,5	27,60	21	21
32	48,30	8	8	16	31,05	18	18
40	60,95	4	4	21	37,95	11	11
50	69,00	3	3	29	48,30	8	8
63	74,75	2	2	36	60,95	3	3
				42	69,00	3	3
				48	74,75	2	2

Lid



\* = Conical form tapering downwards  
Free dimensions-tolerance to DIN 16901 - 130



Base