

## Polyester Ex cabinets



Gost  
Russia



Gost  
Kazakhstan



Further international  
Ex-Approvals on request

### Technical Data

#### Explosion protection:

II 2 G / 2 D

EEx e II T6 (increased safety)

EEx ia IIC T6 (intrinsic safety)

EEx e(ia) IIC T6 (mixed fittings)

Temperature class T5 on request

#### Certificates:

Empty enclosure: PTB 01 ATEX 1061U

Terminal enclosure: PTB 00 ATEX 1002

#### Material:

Glassfibre-reinforced duroplastic Polyester,  
graphite added

#### Colour:

Similar to RAL 9011, black

#### Ingress protection:

IP 66, EN 60529

#### Impact resistance:

>7 Joule, EN 50014

#### Flammability:

Self-extinguishing, UL 94/V0

#### Surface resistance:

<10<sup>9</sup> Ohm, EN 50014 / IEC 60079-0

#### Water absorption:

Max. 0.7 %, ASTM D570

#### Toxicity:

Halogenfree

#### Temperature range or application acc. EN:

-20° to +40°C

(corresponds T6 = 85°C surface temperature)

-20° to +55°C

(corresponds T5 = 100°C surface temperature)

-55°C with special marking on request

### Polyester Ex enclosure with hinged lid

- Efficient protection and easy handling of Ex component fittings
- Available as
  - full assembled enclosure with terminal blocks, cable glands and accessories, or as
  - empty enclosure, component certified
- Optional with window

### Included in delivery

Empty enclosure:  
Cabinet with silicone seal

Terminal enclosure:  
Cabinet - depending on version - with DIN rails, internal earthing connections, terminals, manufacturing, cable glands. Locks are not included in the scope of delivery, they have to be ordered separately

# Polyester Ex cabinets

## Programme range

Type	Dimensions in mm		
Polyester cabinets "Mini-Polyglas"	W x L x H		
<b>06.20 20 00</b> <b>16.20 20 00</b> <b>26.20 20 00</b>	200 x 200 x 170		
<b>06.20 30 00</b> <b>16.20 30 00</b> <b>26.20 30 00</b>	200 x 300 x 170		
Polyester cabinets "Polyglas"			
<b>06.30 40 00</b> <b>16.30 40 00</b> <b>26.30 40 00</b>	300 x 400 x 200		
<b>06.40 60 00</b> <b>16.40 60 00</b> <b>26.40 60 00</b>	400 x 600 x 250		

## Accessories

Type	DIN rail TS 35	Mounting plate	External mounting brackets
Polyester cabinets "Mini-Polyglas"			
<b>06/16/26.20 20 00</b>	•	•	•
<b>06/16/26.20 30 00</b>	•	•	•
Polyester cabinets "Polyglas"			
<b>06/16/26.30 40 00</b>	•	•	•
<b>06/16/26.40 60 00</b>	•	•	•

## Lock system (loose)

	Order No.
Polyester cabinets "Mini-Polyglas"	
Triangular screw 8 mm (2 pcs.)	<b>21.63 00 03</b>
Square screw 8 mm (2 pcs.)	<b>21.63 00 04</b>
Square screw 6 mm (2 pcs.)	<b>21.63 00 24</b>
Philips screw (2 pcs.)	<b>21.63 00 05</b>
Polyester cabinets "Polyglas"	
Triangular lock 8 mm (2 pcs.)	<b>21.61 00 03</b>
Square lock 8 mm (2 pcs.)	<b>21.61 00 04</b>
Square lock 7 mm (2 pcs.)	<b>21.61 00 14</b>
Daimler-Benz lock (2 pcs.)	<b>21.61 00 06</b>
Double ward lock 3 mm (2 pcs.)	<b>21.61 00 07</b>
Knob (2 pcs.)	<b>21.61 00 01</b>
Knob with lock (2 pcs.)	<b>21.61 00 02</b>

## Accessories (loose)

	Order No.
Polyester cabinets "Mini-Polyglas"	
External mounting brackets (4 pcs.)	<b>10.03 10 08</b>
Socket spanner, triangular 8 mm	<b>10.04 70 03</b>
Socket spanner, square 8 mm	<b>10.04 70 04</b>
Philips socket spanner	<b>10.04 70 05</b>
Polyester cabinets "Polyglas"	
Mounting plate for size 1 (galvanized sheet steel)	<b>10.01 12 03</b>
Mounting plate for size 2 (galvanized sheet steel)	<b>10.01 12 04</b>
External mounting brackets (4 pcs.)	<b>10.03 10 09</b>
Hole lids for fastening through base (4 pcs.)	<b>10.03 90 01</b>
Socket spanner, triangular 8 mm	<b>10.04 70 03</b>
Socket spanner, square 8 mm	<b>10.04 70 04</b>
Socket spanner, square 7 mm	<b>10.04 70 14</b>
Socket spanner Daimler-Benz	<b>10.04 70 06</b>
Socket spanner, double ward 3 mm	<b>10.04 70 07</b>



Type: **E Ex e 06.20 20 00**

**E Ex ia 16.20 20 00**

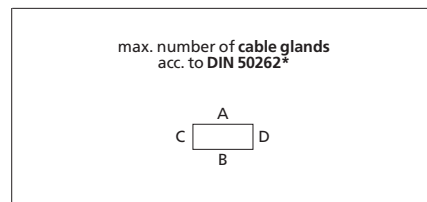
Ex empty enclosures **26.20 20 00**

Certification **ATEX**

External dimensions **200 x 200 x 170 mm**

Weight **1800 g**

DIN rail length in mm	max. fitting length in mm	PE bar max. number	PE busbar max. number	Allen lid screw	Sealable lid screws	External mounting brackets	External hinge pair	Continuity plate side A/B only	Mounting plate
TS 35									
151	131		•	•	•			•	•



Diameter of connection (mm²)	1,5	2,5	4	6	10	16	25	35	50	70	95
	max. number of terminals**	26	21	17	13	10	9	7			
max. number of DIN rails	1	1	1	1	1	1	1				
Number of internal cables in dependence to current/A	6										
	10	76									
	16	26	50	197							
	20	10	29	57							
	25		14	32	62						
	35			9	24	60					
	50				3	19	50				
	63					6	23	82			
	80						9	26			
	100							11			
	125										
	160										
	200										
	225										
	250										
315											
400											
500											

M	Cross-corner dim.	Side		PG	Cross-corner dim.	Side	
		A/B	C/D			A/B	C/D
12	17,25	39	53	7	17,25	39	53
16	25,30	18	25	9	21,85	21	30
20	27,60	13	20	11	25,30	16	23
25	37,95	6	10	13,5	27,60	13	20
32	48,30	5	6	16	31,05	12	16
40	60,95	3	4	21	37,95	6	9
50	69,00	2	2	29	48,30	4	6
63	74,75	1	2	36	60,95	2	4
				42	69,00	1	2
				48	74,75	1	2

Number of internal cables/2 = number of terminals  
 \* not for armoured cables  
 \*\* Base: Terminal block Phoenix Contact, further see page 81

Type: **E Ex e 06.20 30 00**

**E Ex ia 16.20 30 00**

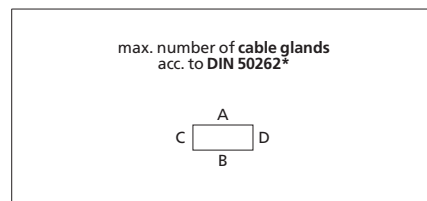
Ex empty enclosure **26.20 30 00**

Certification **ATEX**

External dimensions **200 x 300 x 170 mm**

Weight **2350 g**

DIN rail length in mm	max. fitting length in mm	PE bar max. number	PE busbar max. number	Allen lid screw	Sealable lid screws	External mounting brackets	External hinge pair	Continuity plate side A/B only	Mounting plate
TS 35									
251	231		•	•	•			•	•



Diameter of connection (mm²)	1,5	2,5	4	6	10	16	25	35	50	70	95
	max. number of terminals**	50	40	33	25	20	17	13	13	10	
max. number of DIN rails	1	1	1	1	1	1	1	1	1		
Number of internal cables in dependence to current/A	6										
	10	80									
	16	27	53	208							
	20	11	31	60							
	25		14	34	65						
	35			10	25	64					
	50				3	21	53				
	63					7	24	87			
	80						9	27	97		
	100							11	25		
	125								10	26	
	160									9	
	200										
	225										
	250										
315											
400											
500											

M	Cross-corner dim.	Side		PG	Cross-corner dim.	Side	
		A/B	C/D			A/B	C/D
12	17,25	77	53	7	17,25	77	53
16	25,30	38	25	9	21,85	45	30
20	27,60	28	20	11	25,30	35	23
25	37,95	15	10	13,5	27,60	28	20
32	48,30	9	6	16	31,05	24	16
40	60,95	6	4	21	37,95	15	9
50	69,00	4	2	29	48,30	8	6
63	74,75	3	2	36	60,95	6	4
				42	69,00	4	2
				48	74,75	3	2

Number of internal cables/2 = number of terminals  
 \* not for armoured cables  
 \*\* Base: Terminal block Phoenix Contact, further see page 81

Certification **ATEX**

External dimensions **300 x 400 x 200 mm**

Weight **4100 g**

DIN rail length in mm	max. fitting length in mm	PE bar max. number	PE busbar max. number	Allen lid screw	Sealable lid screws	External mounting brackets	External hinge pair	Continuity plate side A/B only	Mounting plate
TS 35									
365	345		•	•	•			•	•

Diameter of connection (mm²)	1,5	2,5	4	6	10	16	25	35	50	70	95	120	
max. number of terminals**	154	124	104	78	62	26	21	21	16	13	13	9	
max. number of DIN rails	2	2	2	2	2	1	1	1	1	1	1	1	
Number of internal cables in dependence to current/A	6												
	10	105											
	16	36	70	272									
	20	15	41	79									
	25		19	45	86								
	35			13	34	84							
	50				5	27	69						
	63					9	32	114					
	80						12	36	128				
	100							15	34				
	125								13	34			
	160									11	30		
	200										10	26	80
	225										4	15	31
	250											8	19
315												4	
400													
500													

Number or internal cables/2 = number of terminals

\* not for armoured cables

\*\* Base: Terminal block Phoenix Contact, further see page 81

max. number of cable glands acc. to DIN 50262*							
M	Cross-corner dim.	Side		PG	Cross-corner dim.	Side	
		A/B	C/D			A/B	C/D
12	17,25	106	144	7	17,25	106	140
16	25,30	48	65	9	21,85	63	85
20	27,60	40	54	11	25,30	45	63
25	37,95	21	30	13,5	27,60	40	54
32	48,30	12	17	16	31,05	30	42
40	60,95	8	12	21	37,95	21	29
50	69,00	5	7	29	48,30	12	16
63	74,75	4	5	36	60,95	8	11
				42	69,00	5	7
				48	74,75	4	6

Certification **ATEX**

External dimensions **400 x 600 x 250 mm**

Weight **7200 g**

DIN rail length in mm	max. fitting length in mm	PE bar max. number	PE busbar max. number	Allen lid screw	Sealable lid screws	External mounting brackets	External hinge pair	Continuity plate side A/B only	Mounting plate	
TS 35										
565	545		•	•	•			•	•	

Diameter of connection (mm²)	1,5	2,5	4	6	10	16	25	35	50	70	95	120	150	185	240
max. number of terminals**	372	300	252	126	102	86	34	34	26	21	21	17	17	14	14
max. number of DIN rails	3	3	3	2	2	2	1	1	1	1	1	1	1	1	1
Number of internal cables in dependence to current/A	6														
	10	138													
	16	47	91	356											
	20	19	53	103											
	25		25	58	112										
	35			17	44	109									
	50				6	35	90								
	63					12	42	149							
	80						16	47	167						
	100							20	44						
	125								2	18	44				
	160									15	39				
	200										14	34	105		
	225										5	19	41		
	250											10	25	52	
	315												5	15	31
400														7	21
500															3

Number or internal cables/2 = number of terminals

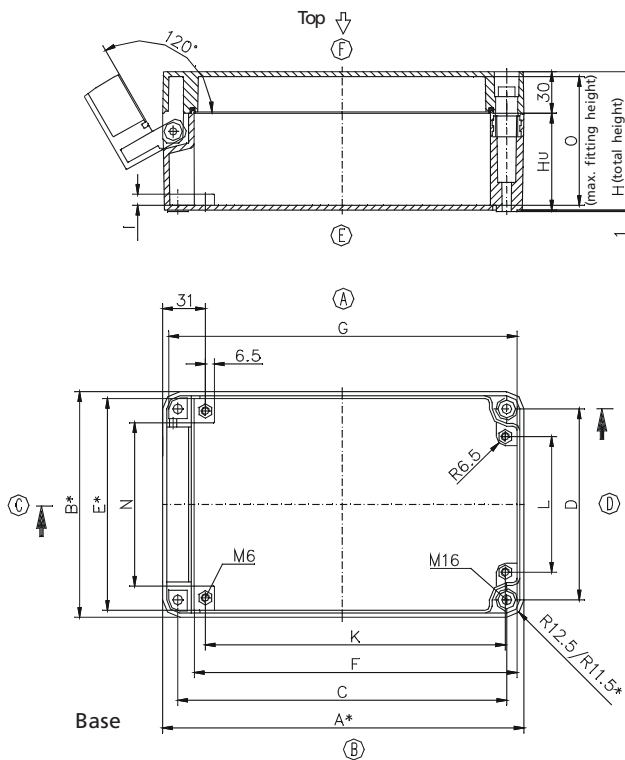
\* not for armoured cables

\*\* Base: Terminal block Phoenix Contact, further see page 81

max. number of cable glands acc. to DIN 50262*							
M	Cross-corner dim.	Side		PG	Cross-corner dim.	Side	
		A/B	C/D			A/B	C/D
12	17,25	215	256	7	17,25	198	256
16	25,30	102	158	9	21,85	136	208
20	27,60	81	123	11	25,30	102	158
25	37,95	43	65	13,5	27,60	81	123
32	48,30	26	40	16	31,05	63	96
40	60,95	18	27	21	37,95	40	63
50	69,00	11	18	29	48,30	24	36
63	74,75	10	14	36	60,95	17	26
				42	69,00	11	17
				48	74,75	10	14

## Dimensions

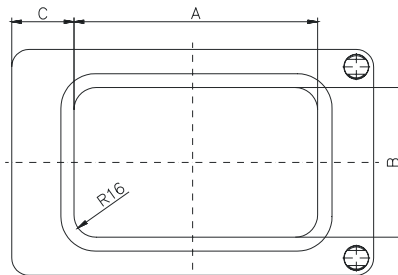
Type	A	B	C	D	E	F	G	I	K	L	M	N	H <sub>U</sub>	H <sub>tot</sub>
<b>06./16.20 20</b>	200/197*	200/197*	175	175	190/187*	173	188	8.5	135	170	149	149	138	168
<b>06./16.20 30</b>	300/297*	200/197*	275	175	190/187*	273	288	8.5	235	170	149	149	138	168



\* = Conical form tapering downwards  
Free dimensions-tolerance to DIN 16901 - 130

## Windows

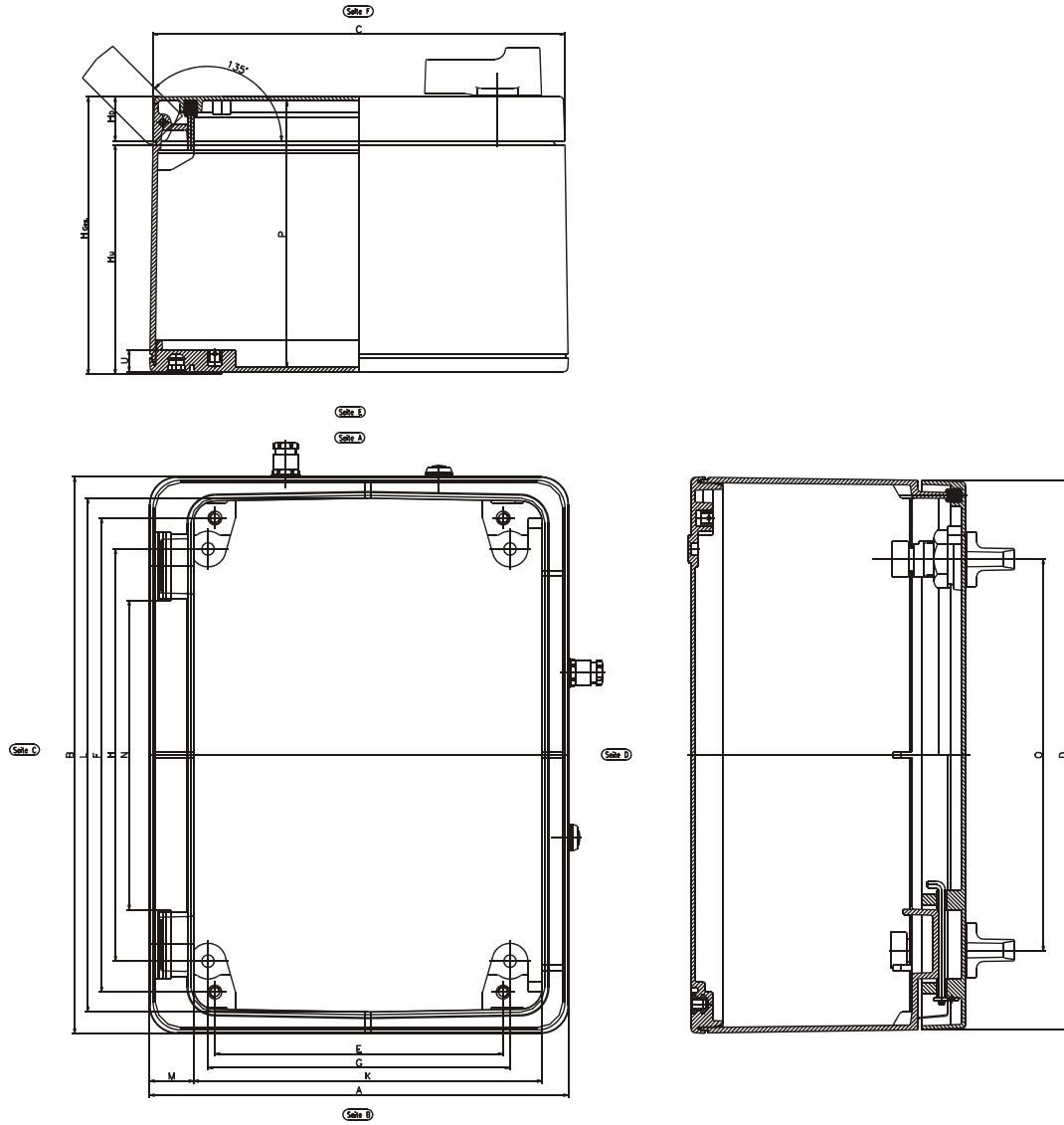
Type	A	B	C
<b>06./16.20 20 00</b>	120	120	45
<b>06./16.20 30 00</b>	210	120	45



# Polyester Ex cabinets

## Dimensions

Type	A	B	C	D	E	F	G	H	K	L	M	N	O	P	H <sub>U</sub>	H <sub>D</sub>	H <sub>Ges</sub>
<b>06./16.30 40 00</b>	305	405	300	400	210	345	220	300	254	374	32	225,2	285	194	167	32	202
<b>06./16.40 60 00</b>	405	605	400	600	310	545	320	500	352	573	34	425,2	478	243,5	217	32,5	252



## Windows

Type	A	B	C	D
<b>06./16.30 40 00</b>	272,4	152,4	63,8	53,8
<b>06./16.40 60 00</b>	452,4	247,4	73,8	53,8

