



UL 50



- Robust aluminium enclosure for mechanical engineering and automation technology
- Fastening possibility for DIN rails and mounting plates
- Field enclosure (2 sizes) with open external fastening

## Technical Data

### Material:

DIN EN 1706 EN AC-AISI 12 (Fe)

### Painting:

powder coating

### Colour:

RAL 7001, silver grey

special colour on request

### Ingress protection:

IP 66 acc. to EN 60529

higher IP class on request

### Impact resistance:

>7 Joule, EN 50014

### Temperature range:

PUR (polyurethane) seal (std.): -40°C to +90°C

CR (chloroprene) seal: -40°C to +100°C

VMQ(silicone) seal (optional): -60°C to +130°C

### Included in delivery

Aluminium enclosure consisting of lid, seal incl. captive +/- stainless steel screws, base with 2 or 4 earthing screws

# Aluminium Standard

## Programme range

### Standard enclosures

	W x L x H (mm)	DIN rails for terminals		Earthing rail, number of clamps	Mounting plate, thickness in mm <sup>1)</sup>	External brackets set <sup>2)</sup>	External aluminium hinge pair <sup>3), 4)</sup>	Internal hinge pair <sup>2), 4)</sup>	Quick lock <sup>5)</sup>	Turn bolt fastener <sup>4)</sup>
		TS 15	TS 35							
01.05 05 03	45 x 50 x 30									
01.06 06 03	64 x 58 x 34									
01.06 10 03	64 x 98 x 34									
01.06 15 03	64 x 150 x 34									
01.06 19 03	64 x 185 x 34									
01.08 08 06	80 x 75 x 57				1,5					
01.08 13 06	80 x 125 x 57				1,5					
01.08 18 06	80 x 175 x 57				1,5					
01.08 25 05	80 x 250 x 52									
01.10 10 08	100 x 100 x 80				1,5					
01.10 16 08	100 x 160 x 80				1,5					
01.10 20 08	100 x 200 x 80				1,5					
01.12 12 08	120 x 122 x 80			6	1,5					
01.12 12 09	120 x 122 x 90			6	1,5					
01.12 22 08	120 x 220 x 80			13	1,5					
01.12 22 09	120 x 220 x 90			13	1,5					
01.12 22 12	120 x 220 x 117			13	1,5					
01.12 36 08	120 x 360 x 80			23	1,5					
01.14 14 09	140 x 140 x 90			6	1,5					
01.14 20 09	140 x 200 x 90			11	1,5					
01.16 16 09	160 x 160 x 90			8	1,5					
01.16 26 09	160 x 260 x 90			16	1,5					
01.16 36 09	160 x 360 x 90			23	1,5					
01.16 56 09	160 x 560 x 90			36	2,0					
01.18 18 10	180 x 180 x 100			8	1,5					
01.18 28 10	180 x 280 x 100			17	1,5					
01.23 10 11	100 x 230 x 110			-	1,5					
01.23 20 11	230 x 200 x 110			10	1,5					
01.23 20 18	230 x 200 x 180			10	1,5					
01.23 28 11	230 x 280 x 110			16	1,5					
01.23 33 11	230 x 330 x 110			21	1,5					
01.23 33 18	230 x 330 x 180			21	1,5					
01.23 40 11	230 x 400 x 110			25	2					
01.23 40 23	230 x 400 x 225			25	2					
01.23 60 11	230 x 600 x 110			40	2					
01.31 40 11	310 x 400 x 110			25	2					
01.31 40 14	310 x 400 x 140			25	2					
01.31 40 18	310 x 400 x 180			25	2					
01.31 40 23	310 x 400 x 226			25	2					
01.31 60 11	310 x 600 x 110			40	2					
01.31 60 18	310 x 600 x 180			40	2					
01.60 60 20	600 x 600 x 200				2,5					

### Field enclosure with integrated external fastening

01.06 12 00	64 x 115 x 34,5									
01.06 19 00	64 x 186 x 34,5									

<sup>1)</sup> galvanized sheet steel   <sup>2)</sup> stainless steel   <sup>3)</sup> Diecast alu   <sup>4)</sup> Please quote installation side A-D when ordering   <sup>5)</sup> on request

### Other accessories

EMC screening (without type 01.60 60 20)

SWB/SBG/SBGL corrosion protection

Allen lid screws (without type 01.60 60 20)

Silicone lid seal up to +130°C

Sealable lid screws in steel (without type 01.60 60 20)





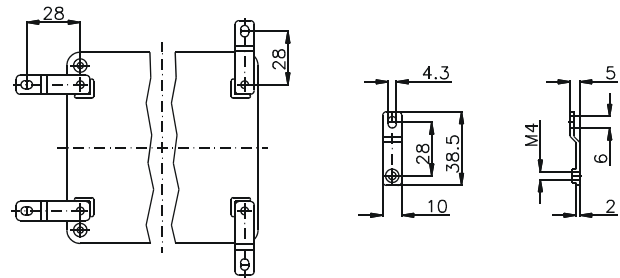
## Accessories



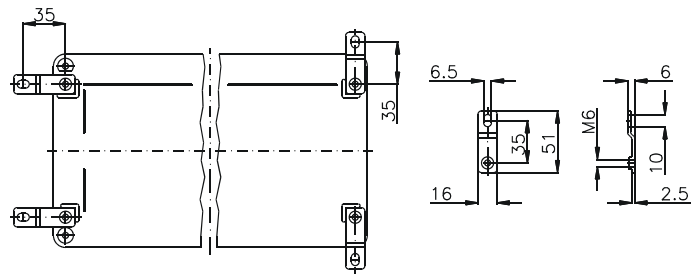
**External brackets**  
set = 4 pcs

Order No.	for enclosure
<b>10.03 11 01</b>	01.08 08 06 - 01.10 20 01
<b>10.03 11 02</b>	01.12 12 08 - 01.31 60 18

Type 10.03 11 01

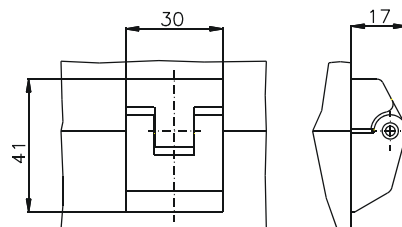


Type 10.03 11 02



**External hinge**  
opening angle 150°  
set = 2 pcs

Order No. **10.02 70 01**



**Internal hinge**  
opening angle 95°  
set = 2 pcs

Order No. **10.02 20 01**



Type: **01.06 10 03**

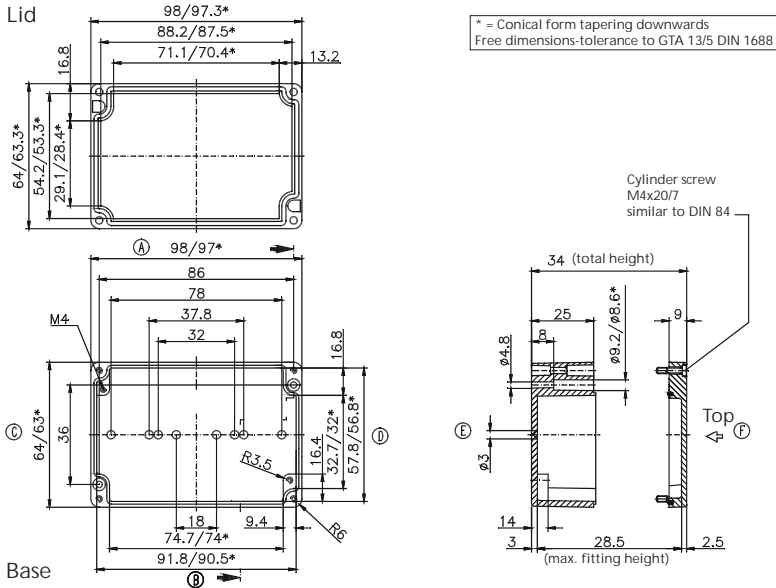
External dimensions: **64 x 98 x 34 mm**

Weight: **200 g**

DIN rail length in mm	max. fitting length in mm	Earthing rail clamp	Mounting plate (thickness in mm)	External mounting brackets	External hinge* set	EMC version	Internal hinge* set	SWB / SBGL Corr.protection	Allen lid screws	Silicone lid seal	Sealable lid screws in steel	Turn bolt fastener on request	Quick lock
TS 15						•		•	•	•	•		
87.5													

Maximum number of cable glands *to DIN 50262\**

M	Corner dim.	Side		PG	Corner dim.	Side	
		A	C			B	D
12	17.25	4	1	7	17.25	4	1
16	25.30			9	21.85	3	1
20	27.60			11	25.30		
25	37.95			13.5	27.60		
32	48.30			16	31.05		
40	60.95			21	37.95		
50	69.00			29	48.30		
63	74.75			36	60.95		
				42	69.00		
				48	74.75		



Type: **01.06 12 00**

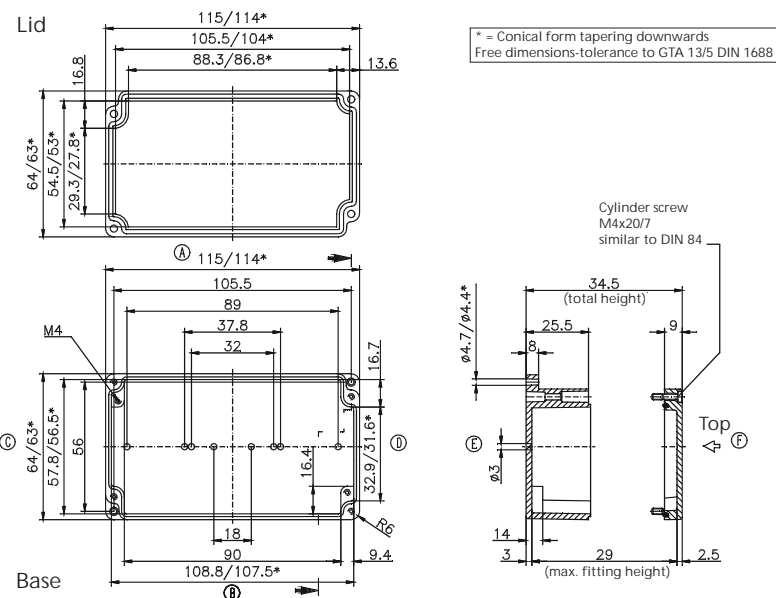
External dimensions: **64 x 115 x 34 mm**

Weight: **230 g**

DIN rail length in mm	max. fitting length in mm	Earthing rail clamp	Mounting plate (thickness in mm)	External mounting brackets	External hinge* set	EMC version	Internal hinge* set	SWB / SBGL Corr.protection	Allen lid screws	Silicone lid seal	Sealable lid screws in steel	Turn bolt fastener on request	Quick lock
						•		•	•	•	•		

Maximum number of cable glands *to DIN 50262\**

M	Corner dim.	Side		PG	Corner dim.	Side	
		A	C			B	D
12	17.25	5	1	7	17.25	5	1
16	25.30			9	21.85	4	1
20	27.60			11	25.30		
25	37.95			13.5	27.60		
32	48.30			16	31.05		
40	60.95			21	37.95		
50	69.00			29	48.30		
63	74.75			36	60.95		
				42	69.00		
				48	74.75		



\* Please quote mounting side





Type: **01.06 19 00**

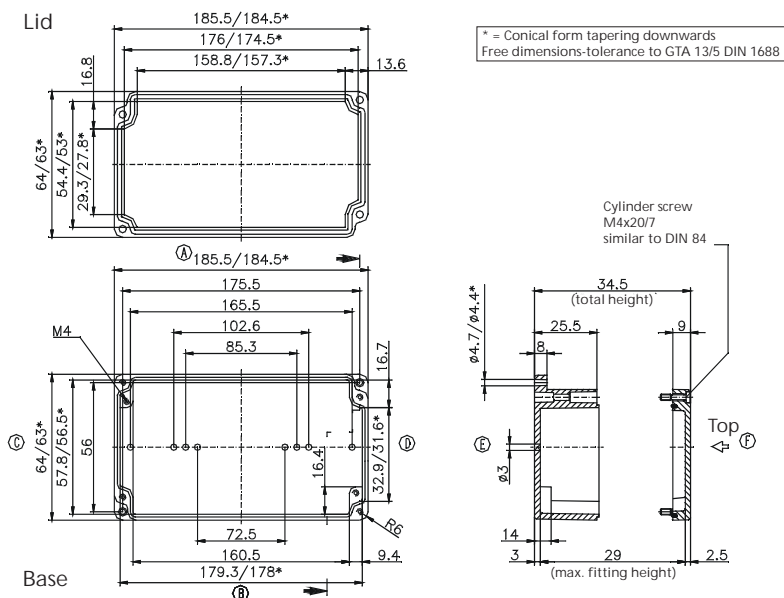
External dimensions: **64 x 185 x 34 mm**

Weight: **320 g**

DIN rail length in mm	max. fitting length in mm	Earthing rail clamp	Mounting plate (thickness in mm)	External mounting brackets	External hinge* set	EMC version	Internal hinge* set	SWB / SBG / SBGL Corr.protection	Allen lid screws	Silicone lid seal	Sealable lid screws in steel	Turn bolt fastener on request	Quick lock
TS 15													
174						•		•	•	•	•		

Maximum number of cable glands *to DIN 50262\**

M	Corner dim.	Side		PG	Corner dim.	Side	
		A/B	C/D			A/B	C/D
12	17.25	10	1	7	17.25	10	1
16	25.30			9	21.85	7	1
20	27.60			11	25.30		
25	37.95			13.5	27.60		
32	48.30			16	31.05		
40	60.95			21	37.95		
50	69.00			29	48.30		
63	74.75			36	60.95		
				42	69.00		
				48	74.75		



Type: **01.08 08 06**

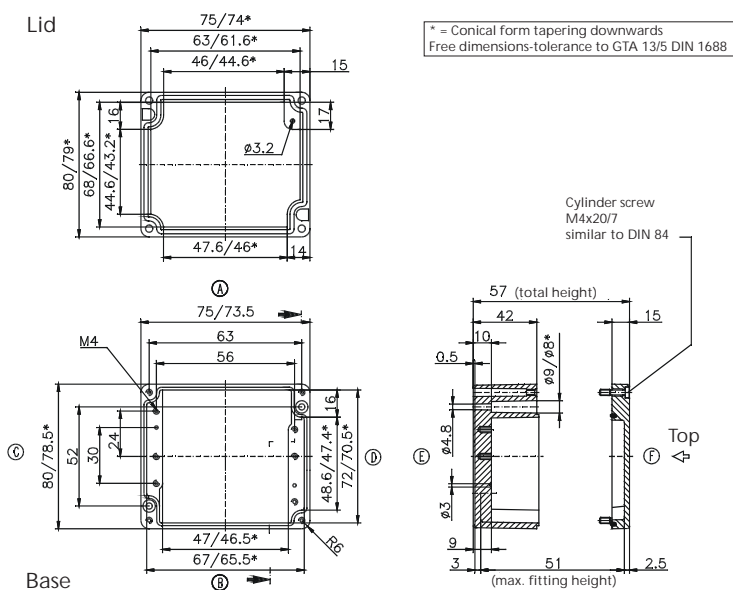
External dimensions: **80 x 75 x 57 mm**

Weight: **280 g**

DIN rail length in mm	max. fitting length in mm	Earthing rail clamp	Mounting plate (thickness in mm)	External mounting brackets	External hinge* set	EMC version	Internal hinge* set	SWB / SBG / SBGL Corr.protection	Allen lid screws	Silicone lid seal	Sealable lid screws in steel	Turn bolt fastener on request	Quick lock
TS 15													
63	46		1.5			•		•	•	•	•		•

Maximum number of cable glands *to DIN 50262\**

M	Corner dim.	Side		PG	Corner dim.	Side	
		A/B	C/D			A/B	C/D
12	17.25	6	5	7	17.25	6	5
16	25.30	2	2	9	21.85	4	2
20	27.60	2	2	11	25.30	2	2
25	37.95	1		13.5	27.60	2	2
32	48.30			16	31.05	1	1
40	60.95			21	37.95	1	
50	69.00			29	48.30		
63	74.75			36	60.95		
				42	69.00		
				48	74.75		



\* Please quote mounting side



Type: **01.08 25 05**

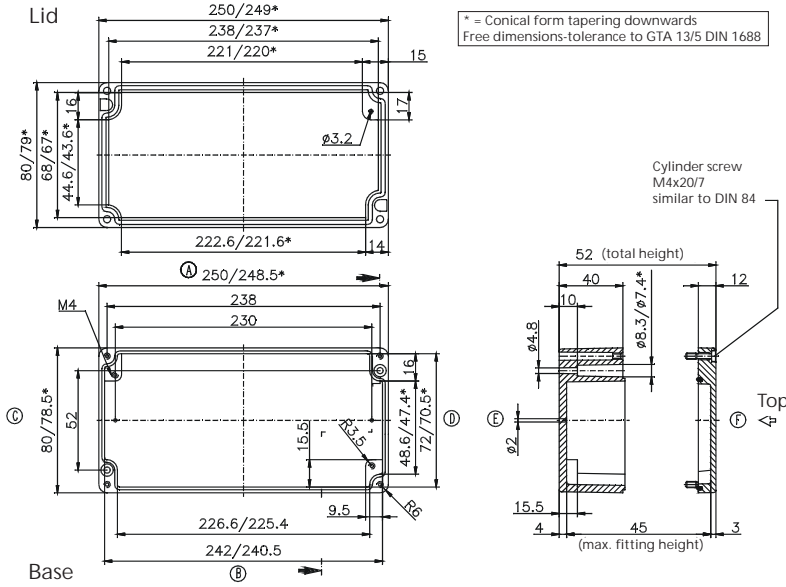
External dimensions: **80 x 250 x 52 mm**

Weight: **710 g**

DIN rail length in mm	max. fitting length in mm	Earthing rail clamp	Mounting plate (thickness in mm)	External mounting brackets	External hinge* set	EMC version	Internal hinge* set	SWB / SBGL Cor.protection	Allen lid screws	Silicone lid seal	Sealable lid screws in steel	Turn bolt fastener on request	Quick lock
TS 15	238	220											

Maximum number of cable glands *to DIN 50262\**

M	Corner dim.	Side		PG	Corner dim.	Side		
		A	C			B	D	
12	17.25	26	6	7	17.25	26	6	
16	25.30	10	2	9	21.85	17	3	
20	27.60	9	2	11	25.30	10	2	
25	37.95	6	1	13.5	27.60	9	2	
32	48.30				16	31.05	7	1
40	60.95				21	37.95	4	1
50	69.00				29	48.30		
63	74.75				36	60.95		
					42	69.00		
					48	74.75		



Type: **01.10 10 08**

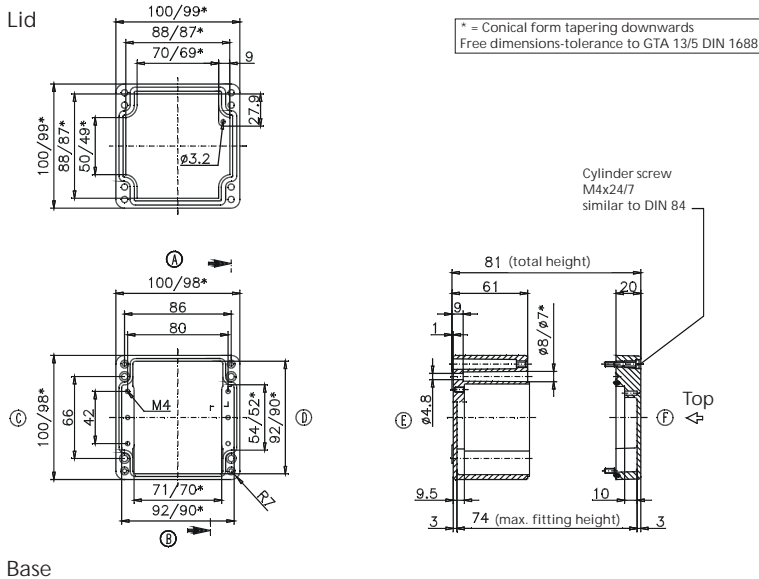
External dimensions: **100 x 100 x 80 mm**

Weight: **600 g**

DIN rail length in mm	max. fitting length in mm	Earthing rail clamp	Mounting plate (thickness in mm)	External mounting brackets	External hinge* set	EMC version	Internal hinge* set	SWB / SBGL Cor.protection	Allen lid screws	Silicone lid seal	Sealable lid screws in steel	Turn bolt fastener on request	Quick lock
TS 15/35	87,5	70	1,5										

Maximum number of cable glands *to DIN 50262\**

M	Corner dim.	Side		PG	Corner dim.	Side		
		A	C			B	D	
12	17.25	12	9	7	17.25	12	9	
16	25.30	6	4	9	21.85	8	5	
20	27.60	5	3	11	25.30	5	4	
25	37.95	2	1	13.5	27.60	5	3	
32	48.30	1	1	16	31.05	4	2	
40	60.95				21	37.95	2	1
50	69.00				29	48.30	1	1
63	74.75				36	60.95		
					42	69.00		
					48	74.75		



\* Please quote mounting side

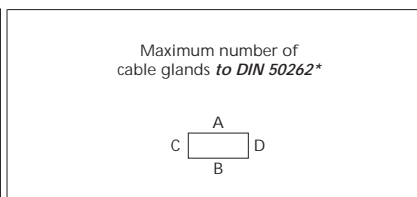


Type: **01.12 12 08**

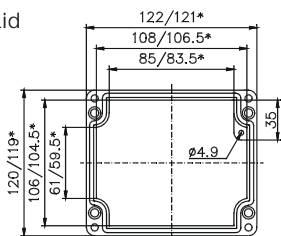
External dimensions: **120 x 122 x 80 mm**

Weight: **940 g**

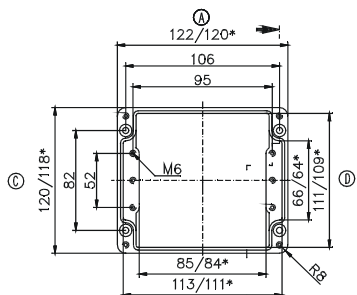
DIN rail length in mm	max. fitting length in mm	Earthing rail clamp	Mounting plate (thickness in mm)	External mounting brackets	External hinge* set	EMC version	Internal hinge* set	SWB / SBG / SBGL Corr.protection	Allen lid screws	Silicone lid seal	Sealable lid screws in steel	Turn bolt fastener on request	Quick lock
TS 35	85	5	1.5	•	•	•		•	•	•	•		•



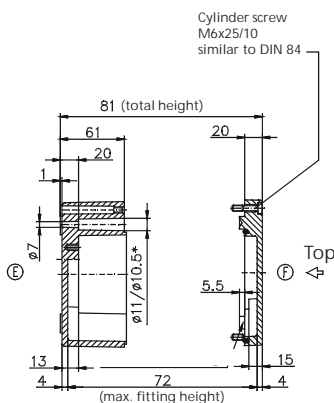
Lid



\* = Conical form tapering downwards  
Free dimensions-tolerance to GTA 13/5 DIN 1688



Base



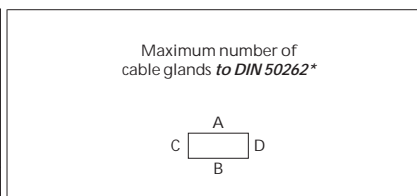
M	Corner dim.	Side		PG	Corner dim.	Side	
		A/B	C/D			A/B	C/D
12	17.25	16	11	7	17.25	16	11
16	25.30	8	5	9	21.85	11	6
20	27.60	6	4	11	25.30	6	4
25	37.95	3	2	13.5	27.60	6	3
32	48.30	2	1	16	31.05	5	2
40	60.95			21	37.95	2	2
50	69.00			29	48.30	2	1
63	74.75			36	60.95		
				42	69.00		
				48	74.75		

Type: **01.12 12 09**

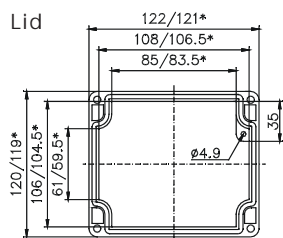
External dimensions: **120 x 122 x 90 mm**

Weight: **920 g**

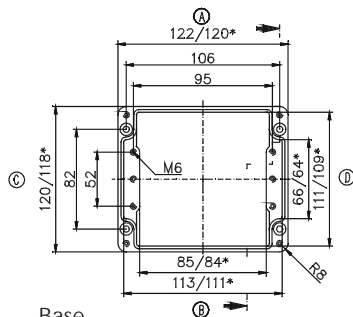
DIN rail length in mm	max. fitting length in mm	Earthing rail clamp	Mounting plate (thickness in mm)	External mounting brackets	External hinge* set	EMC version	Internal hinge* set	SWB / SBG / SBGL Cor.protection	Allen lid screws	Silicone lid seal	Sealable lid screws in steel	Turn bolt fastener on request	Quick lock
TS 35	85	5	1.5	•	•	•		•	•	•	•		•



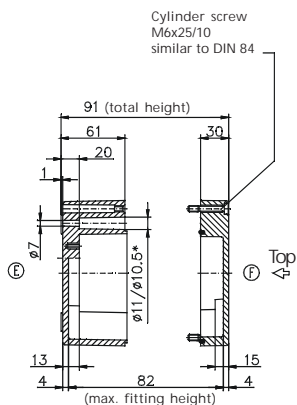
Lid



\* = Conical form tapering downwards  
Free dimensions-tolerance to GTA 13/5 DIN 1688



Base



M	Corner dim.	Side		PG	Corner dim.	Side	
		A/B	C/D			A/B	C/D
12	17.25	16	11	7	17.25	16	11
16	25.30	8	5	9	21.85	11	6
20	27.60	6	4	11	25.30	6	4
25	37.95	3	2	13.5	27.60	6	3
32	48.30	2	1	16	31.05	5	2
40	60.95			21	37.95	2	2
50	69.00			29	48.30	2	1
63	74.75			36	60.95		
				42	69.00		
				48	74.75		

\* Please quote mounting side

Type: **01.12 22 08**

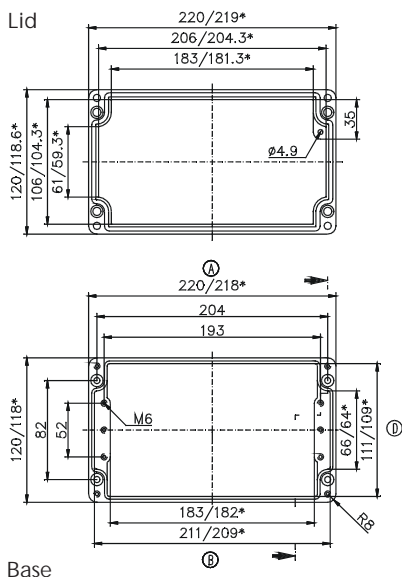
External dimensions: **120 x 220 x 80 mm**

Weight: **1390 g**

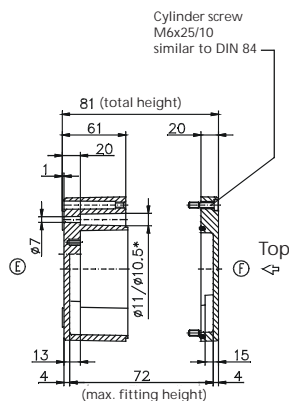
DIN rail length in mm	max. fitting length in mm	Earthing rail clamp	Mounting plate (thickness in mm)	External mounting brackets	External hinge* set	EMC version	Internal hinge* set	SWB / SBGL Corr.protection	Allen lid screws	Silicone lid seal	Sealable lid screws in steel	Turn bolt fastener on request	Quick lock
TS 35	183	13	1.5	•	•	•		•	•	•	•		•

Maximum number of cable glands *to DIN 50262\**

M	Corner dim.	Side		PG	Corner dim.	Side	
		A	C			B	D
12	17.25	34	11	7	17.25	34	11
16	25.30	15	6	9	21.85	24	6
20	27.60	14	4	11	25.30	15	4
25	37.95	6	2	13.5	27.60	14	4
32	48.30	4	1	16	31.05	11	2
40	60.95			21	37.95	6	2
50	69.00			29	48.30	4	1
63	74.75			36	60.95		
				42	69.00		
				48	74.75		



\* = Conical form tapering downwards  
Free dimensions-tolerance to GTA 13/5 DIN 1688



Type: **01.12 22 09**

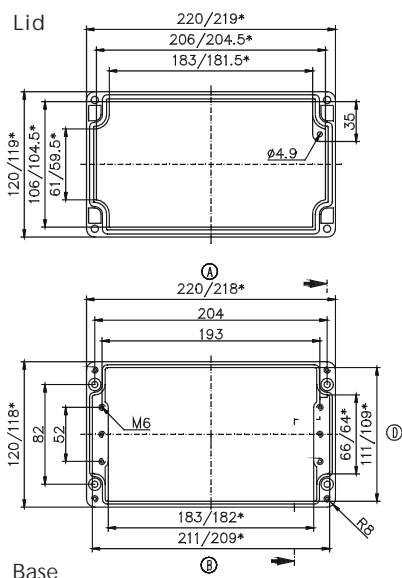
External dimensions: **120 x 220 x 90 mm**

Weight: **1410 g**

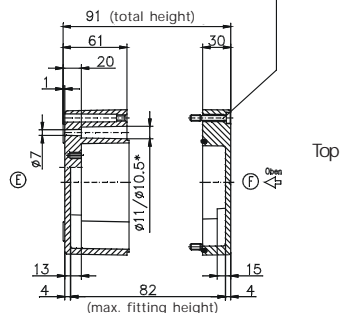
DIN rail length in mm	max. fitting length in mm	Earthing rail clamp	Mounting plate (thickness in mm)	External mounting brackets	External hinge* set	EMC version	Internal hinge* set	SWB / SBGL Cor.protection	Allen lid screws	Silicone lid seal	Sealable lid screws in steel	Turn bolt fastener on request	Quick lock
TS 35	183	13	1.5	•	•	•		•	•	•	•		•

Maximum number of cable glands *to DIN 50262\**

M	Corner dim.	Side		PG	Corner dim.	Side	
		A	C			B	D
12	17.25	34	11	7	17.25	34	11
16	25.30	15	6	9	21.85	24	6
20	27.60	14	4	11	25.30	15	4
25	37.95	6	2	13.5	27.60	14	4
32	48.30	4	1	16	31.05	11	2
40	60.95			21	37.95	6	2
50	69.00			29	48.30	4	1
63	74.75			36	60.95		
				42	69.00		
				48	74.75		



\* = Conical form tapering downwards  
Free dimensions-tolerance to GTA 13/5 DIN 1688



\* Please quote mounting side

Type: **01.12 22 12**

External dimensions: **120 x 220 x 117 mm**

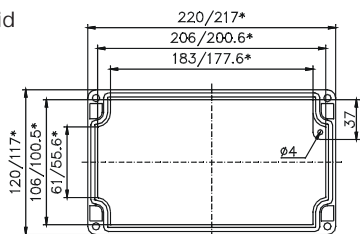
Weight: **1860 g**

DIN rail length in mm	max. fitting length in mm	Earthing rail clamp	Mounting plate (thickness in mm)	External mounting brackets	External hinge* set	EMC version	Internal hinge* set	SWB / SBG / SBGL Corr.protection	Allen lid screws	Silicone lid seal	Sealable lid screws in steel	Turn bolt fastener on request	Quick lock
TS 35	208	183	13	1.5	•	•	•	•	•	•	•	•	•

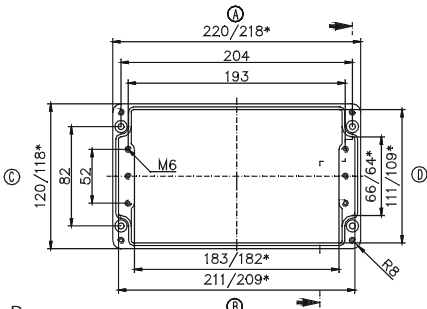
Maximum number of cable glands *to DIN 50262\**

M	Corner dim.	Side		PG	Corner dim.	Side	
		A/B	C/D			A/B	C/D
12	17.25	34	11	7	17.25	34	11
16	25.30	15	6	9	21.85	24	6
20	27.60	14	4	11	25.30	15	4
25	37.95	6	2	13.5	27.60	14	4
32	48.30	4	1	16	31.05	11	2
40	60.95			21	37.95	6	2
50	69.00			29	48.30	4	1
63	74.75			36	60.95		
				42	69.00		
				48	74.75		

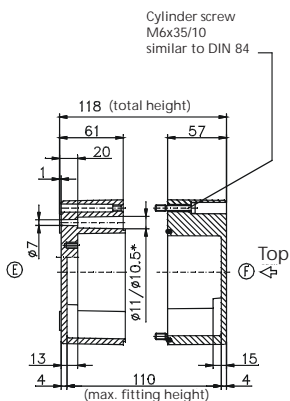
Lid



\* = Conical form tapering downwards  
Free dimensions-tolerance to GTA 13/5 DIN 1688



Base



Type: **01.12 36 08**

External dimensions: **120 x 360 x 80 mm**

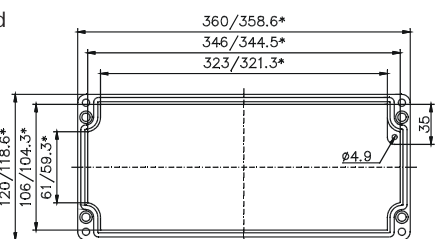
Weight: **1950 g**

DIN rail length in mm	max. fitting length in mm	Earthing rail clamp	Mounting plate (thickness in mm)	External mounting brackets	External hinge* set	EMC version	Internal hinge* set	SWB / SBG / SBGL Corr.protection	Allen lid screws	Silicone lid seal	Sealable lid screws in steel	Turn bolt fastener on request	Quick lock
TS 35	343	323	23	1.5	•	•	•	•	•	•	•	•	•

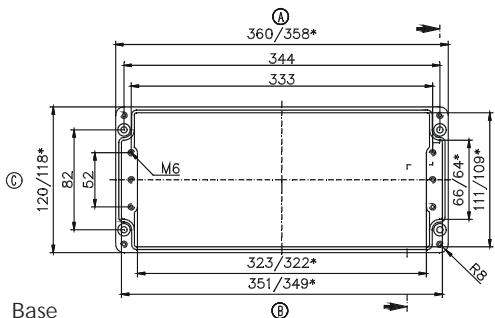
Maximum number of cable glands *to DIN 50262\**

M	Corner dim.	Side		PG	Corner dim.	Side	
		A/B	C/D			A/B	C/D
12	17.25	58	11	7	17.25	58	11
16	25.30	26	5	9	21.85	41	6
20	27.60	24	4	11	25.30	26	4
25	37.95	10	2	13.5	27.60	24	3
32	48.30	7	1	16	31.05	20	2
40	60.95			21	37.95	10	2
50	69.00			29	48.30	7	1
63	74.75			36	60.95		
				42	69.00		
				48	74.75		

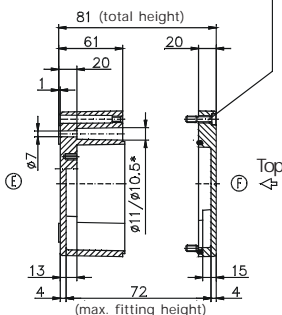
Lid



\* = Conical form tapering downwards  
Free dimensions-tolerance to GTA 13/5 DIN 1688



Base



\* Please quote mounting side

Type: **01.14 14 09**

External dimensions: **140 x 140 x 90 mm**

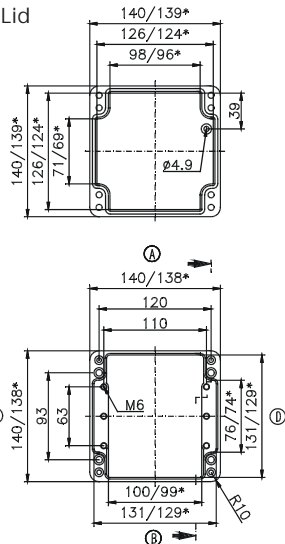
Weight: **1500 g**

DIN rail length in mm	max. fitting length in mm	Earthing rail clamp	Mounting plate (thickness in mm)	External mounting brackets	External hinge* set	EMC version	Internal hinge* set	SWB / SBG / SBGL Corr.protection	Allen lid screws	Silicone lid seal	Sealable lid screws in steel	Turn bolt fastener on request	Quick lock
TS 35	100	6	1.5	•	•	•		•	•	•	•		•

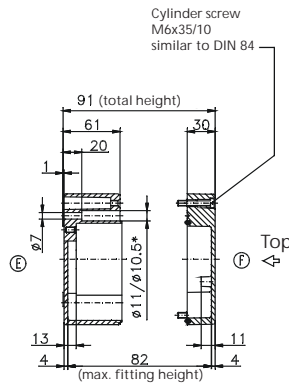
Maximum number of cable glands *to DIN 50262\**

M	Corner dim.	Side		PG	Corner dim.	Side	
		A/B	C/D			A/B	C/D
12	17.25	18	12	7	17.25	18	12
16	25.30	8	6	9	21.85	12	6
20	27.60	8	4	11	25.30	8	5
25	37.95	3	2	13.5	27.60	8	4
32	48.30	2	1	16	31.05	6	3
40	60.95			21	37.95	3	2
50	69.00			29	48.30	2	1
63	74.75			36	60.95		
				42	69.00		
				48	74.75		

Lid



\* = Conical form tapering downwards  
Free dimensions-tolerance to GTA 13/5 DIN 1688



Base

Type: **01.14 20 09**

External dimensions: **140 x 200 x 90 mm**

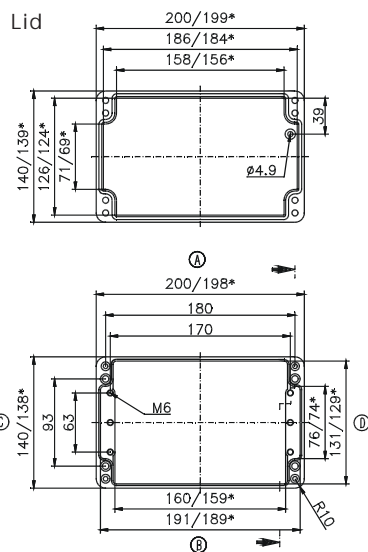
Weight: **1630 g**

DIN rail length in mm	max. fitting length in mm	Earthing rail clamp	Mounting plate (thickness in mm)	External mounting brackets	External hinge* set	EMC version	Internal hinge* set	SWB / SBG / SBGL Corr.protection	Allen lid screws	Silicone lid seal	Sealable lid screws in steel	Turn bolt fastener on request	Quick lock
TS 35	160	12	1.5	•	•	•		•	•	•	•		•

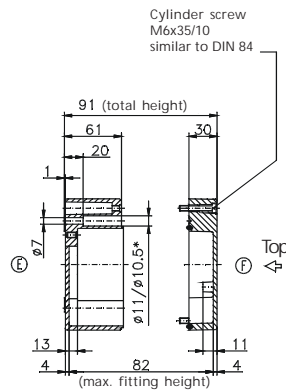
Maximum number of cable glands *to DIN 50262\**

M	Corner dim.	Side		PG	Corner dim.	Side	
		A/B	C/D			A/B	C/D
12	17.25	28	12	7	17.25	28	12
16	25.30	12	6	9	21.85	20	8
20	27.60	12	5	11	25.30	12	6
25	37.95	5	2	13.5	27.60	12	2
32	48.30	3	1	16	31.05	10	3
40	60.95			21	37.95	5	2
50	69.00			29	48.30	3	1
63	74.75			36	60.95		
				42	69.00		
				48	74.75		

Lid



\* = Conical form tapering downwards  
Free dimensions-tolerance to GTA 13/5 DIN 1688



Base

\* Please quote mounting side

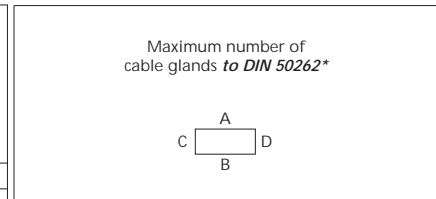


Type: **01.16 16 09**

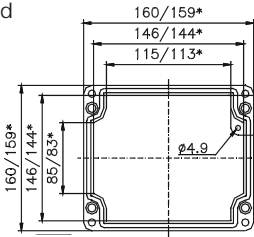
External dimensions: **160 x 160 x 90 mm**

Weight: **1480 g**

DIN rail length in mm	max. fitting length in mm	Earthing rail clamp	Mounting plate (thickness in mm)	External mounting brackets	External hinge* set	EMC version	Internal hinge* set	SWB / SBG / SBGL Corr.protection	Allen lid screws	Silicone lid seal	Sealable lid screws in steel	Turn bolt fastener on request	Quick lock
TS 35	120	8	1.5	•	•	•	•	•	•	•	•	•	•

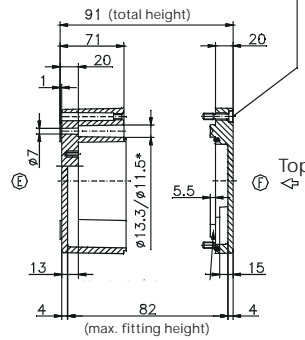


Lid

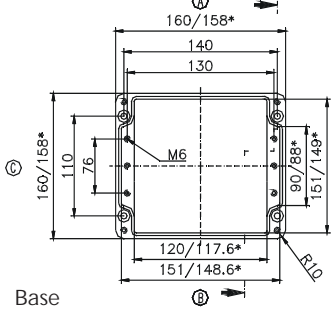


\* = Conical form tapering downwards  
Free dimensions-tolerance to GTA 13/5 DIN 1688

Cylinder screw  
M6x25/10  
similar to DIN 84



Base



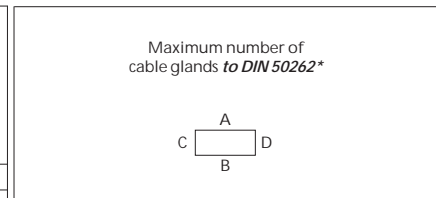
M	Corner dim.	Side		PG	Corner dim.	Side	
		A	C/D			A	C/D
12	17.25	26	16	7	17.25	26	16
16	25.30	12	8	9	21.85	15	11
20	27.60	9	6	11	25.30	12	6
25	37.95	5	3	13.5	27.60	9	6
32	48.30	3	2	16	31.05	8	5
40	60.95	2	1	21	37.95	5	3
50	69.00	2		29	48.30	2	2
63	74.75			36	60.95	2	1
				42	69.00	1	
				48	74.75		

Type: **01.16 26 09**

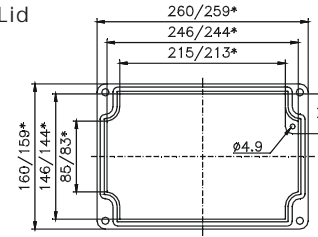
External dimensions: **160 x 260 x 90 mm**

Weight: **2010 g**

DIN rail length in mm	max. fitting length in mm	Earthing rail clamp	Mounting plate (thickness in mm)	External mounting brackets	External hinge* set	EMC version	Internal hinge* set	SWB / SBG / SBGL Corr.protection	Allen lid screws	Silicone lid seal	Sealable lid screws in steel	Turn bolt fastener on request	Quick lock
TS 35	220	16	1.5	•	•	•	•	•	•	•	•	•	•

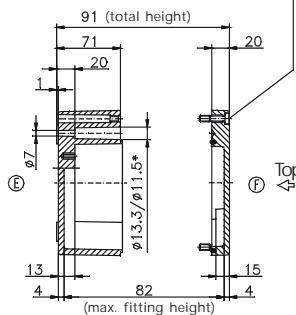


Lid

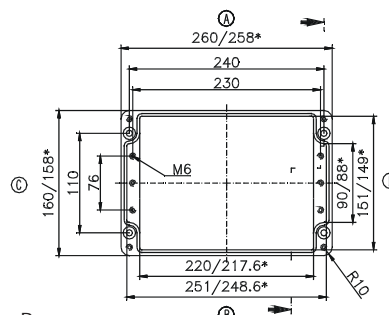


\* = Conical form tapering downwards  
Free dimensions-tolerance to GTA 13/5 DIN 1688

Cylinder screw  
M6x25/10  
similar to DIN 84



Base



M	Corner dim.	Side		PG	Corner dim.	Side	
		A	C/D			A	C/D
12	17.25	50	16	7	17.25	50	16
16	25.30	24	8	9	21.85	30	11
20	27.60	17	6	11	25.30	23	6
25	37.95	10	3	13.5	27.60	17	6
32	48.30	5	2	16	31.05	14	5
40	60.95	3	1	21	37.95	9	3
50	69.00	3		29	48.30	5	2
63	74.75			36	60.95	3	1
				42	69.00	3	
				48	74.75		

\* Please quote mounting side



Type: **01.18 18 10**

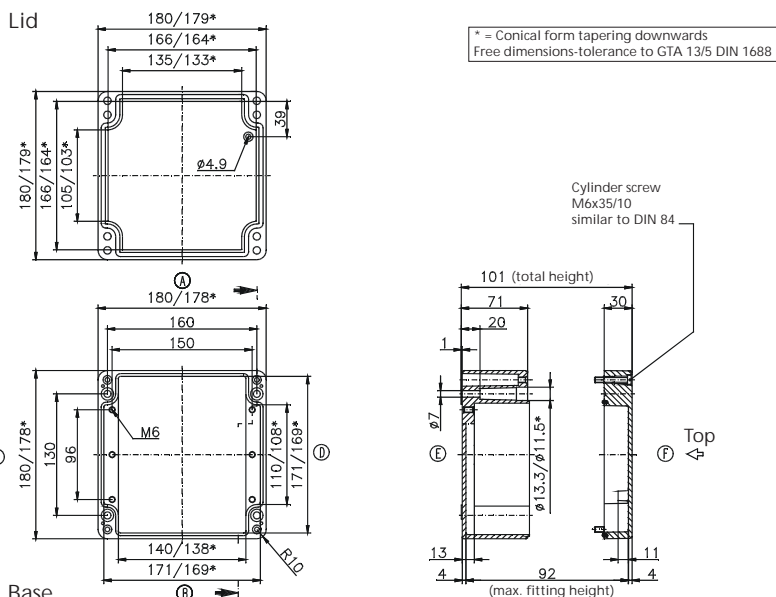
External dimensions: **180 x 180 x 100 mm**

Weight: **2250 g**

DIN rail length in mm	max. fitting length in mm	Earthing rail clamp	Mounting plate (thickness in mm)	External mounting brackets	External hinge* set	EMC version	Internal hinge* set	SWB / SBG / SBGL Corr.protection	Allen lid screws	Silicone lid seal	Sealable lid screws in steel	Turn bolt fastener on request	Quick lock
TS 35	140	8	1.5	•	•	•	•	•	•	•	•	•	•

Maximum number of cable glands to DIN 50262\*

M	Corner dim.	Side		PG	Corner dim.	Side	
		A/B	C/D			A/B	C/D
12	17.25	30	20	7	17.25	28	20
16	25.30	15	9	9	21.85	18	14
20	27.60	11	8	11	25.30	15	8
25	37.95	6	3	13.5	27.60	11	8
32	48.30	3	2	16	31.05	8	6
40	60.95	2	2	21	37.95	6	3
50	69.00	2		29	48.30	3	2
63	74.75			36	60.95	2	2
				42	69.00		
				48	74.75		



Type: **01.18 28 10**

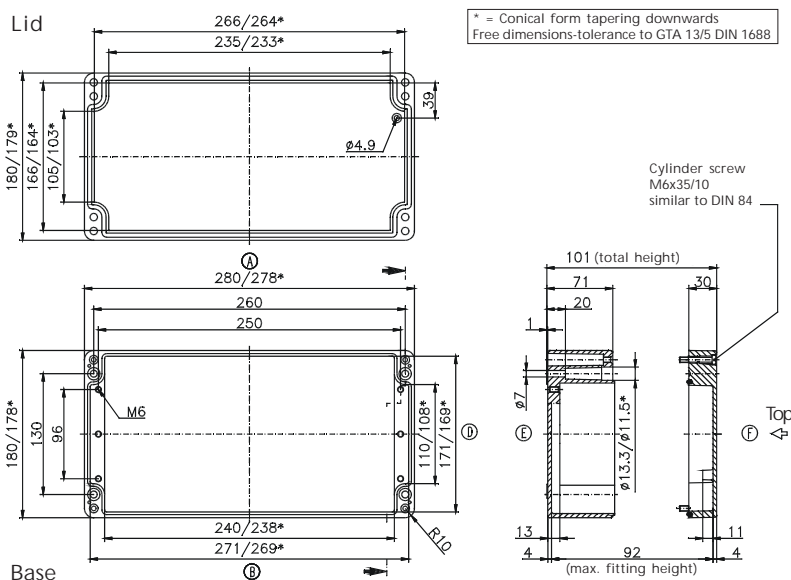
External dimensions: **180 x 280 x 100 mm**

Weight: **2900 g**

DIN rail length in mm	max. fitting length in mm	Earthing rail clamp	Mounting plate (thickness in mm)	External mounting brackets	External hinge* set	EMC version	Internal hinge* set	SWB / SBG / SBGL Corr.protection	Allen lid screws	Silicone lid seal	Sealable lid screws in steel	Turn bolt fastener on request	Quick lock
TS 35	240	16	1.5	•	•	•	•	•	•	•	•	•	•

Maximum number of cable glands to DIN 50262\*

M	Corner dim.	Side		PG	Corner dim.	Side	
		A/B	C/D			A/B	C/D
12	17.25	52	22	7	17.25	52	22
16	25.30	26	10	9	21.85	33	15
20	27.60	18	8	11	25.30	23	10
25	37.95	11	4	13.5	27.60	18	8
32	48.30	5	2	16	31.05	14	7
40	60.95	4	2	21	37.95	10	4
50	69.00	3		29	48.30	5	2
63	74.75			36	60.95	4	2
				42	69.00		
				48	74.75		



\* Please quote mounting side

Type: **01.23 10 11**

External dimensions: **100 x 230 x 110 mm**

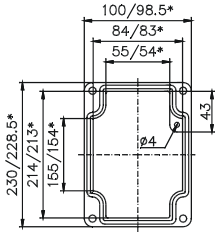
Weight: **1780 g**

DIN rail length in mm	max. fitting length in mm	Earthing rail clamp	Mounting plate (thickness in mm)	External mounting brackets	External hinge* set	EMC version	Internal hinge* set	SWB / SBG / SBGL Corr-protection	Allen lid screws	Silicone lid seal	Sealable lid screws in steel	Turn bolt fastener on request	Quick lock
TS35													
214	190		1.5	•	•	•	•	•	•	•	•	•	•

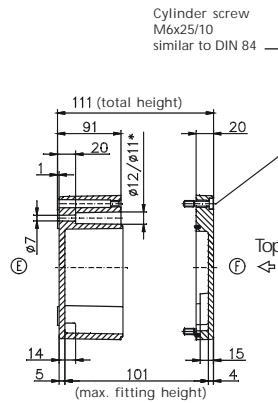
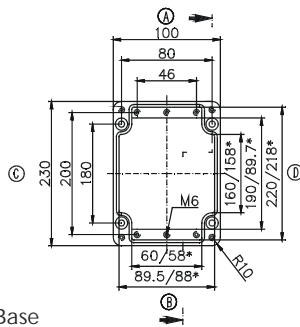
Maximum number of cable glands *to DIN 50262\**

M	Corner dim.	Side		PG	Corner dim.	Side		
		A	C			B	D	
12	17.25	15	45	7	17.25	15	45	
16	25.30	8	18	9	21.85	10	28	
20	27.60	6	17	11	25.30	6	18	
25	37.95	3	8	13.5	27.60	6	17	
32	48.30	2	5	16	31.05	5	12	
40	60.95	1	3	21	37.95	3	8	
50	69.00	1	2	29	48.30	1	4	
63	74.75		2	36	60.95	1	3	
					42	69.00	1	2
					48	74.75	1	2

Lid



\* = Conical form tapering downwards  
Free dimensions-tolerance to GTA 13/5 DIN 1688



Base

Type: **01.23 20 11**

External dimensions: **230 x 200 x 110 mm**

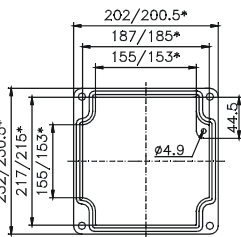
Weight: **2420 g**

DIN rail length in mm	max. fitting length in mm	Earthing rail clamp	Mounting plate (thickness in mm)	External mounting brackets	External hinge* set	EMC version	Internal hinge* set	SWB / SBG / SBGL Corr-protection	Allen lid screws	Silicone lid seal	Sealable lid screws in steel	Turn bolt fastener on request	Quick lock
TS 35													
186	160	12	1.5	•	•	•	•	•	•	•	•	•	•

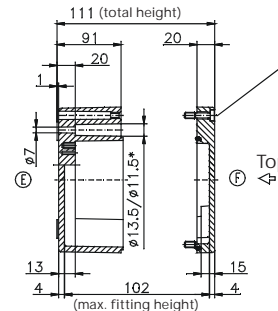
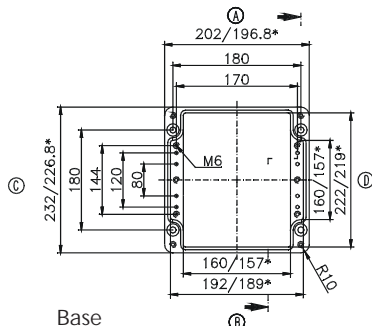
Maximum number of cable glands *to DIN 50262\**

M	Corner dim.	Side		PG	Corner dim.	Side		
		A	C			B	D	
12	17.25	45	45	7	17.25	45	45	
16	25.30	22	18	9	21.85	28	28	
20	27.60	18	17	11	25.30	20	18	
25	37.95	8	8	13.5	27.60	18	17	
32	48.30	6	5	16	31.05	15	12	
40	60.95	3	3	21	37.95	8	8	
50	69.00	2	2	29	48.30	5	4	
63	74.75	2	2	36	60.95	3	3	
					42	69.00	2	2
					48	74.75	2	2

Lid



\* = Conical form tapering downwards  
Free dimensions-tolerance to GTA 13/5 DIN 1688



Base

\* Please quote mounting side

Type: **01.23 20 18**

External dimensions: **230 x 200 x 180 mm**

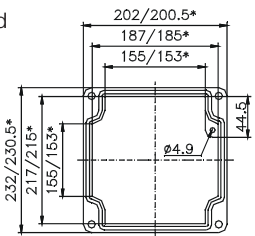
Weight: **3960 g**

DIN rail length in mm	max. fitting length in mm	Earthing rail clamp	Mounting plate (thickness in mm)	External mounting brackets	External hinge* set	EMC version	Internal hinge* set	SWB / SBG / SBGL Corr.protection	Allen lid screws	Silicone lid seal	Sealable lid screws in steel	Turn bolt fastener on request	Quick lock
TS 35													
186	160	12	1.5	•	•	•	•	•	•	•	•	•	•

Maximum number of cable glands *to DIN 50262\**

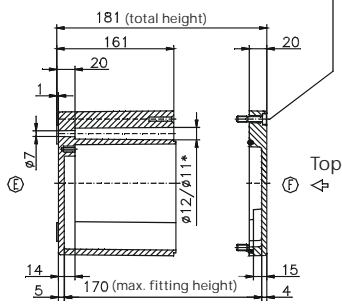
M	Corner dim.	Side		PG	Corner dim.	Side	
		A	C			B	D
12	17.25	90	81	7	17.25	90	81
16	25.30	42	36	9	21.85	56	49
20	27.60	33	33	11	25.30	42	36
25	37.95	18	16	13.5	27.60	33	33
32	48.30	10	9	16	31.05	25	25
40	60.95	6	6	21	37.95	16	16
50	69.00	5	5	29	48.30	10	9
63	74.75	4	4	36	60.95	6	5
				42	69.00	5	4
				48	74.75	4	4

Lid

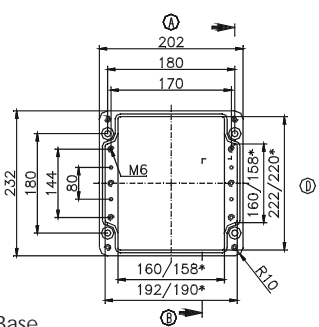


\* = Conical form tapering downwards  
Free dimensions-tolerance to GTA 13/5 DIN 1688

Cylinder screw M6x25/10 similar to DIN 84



Base



Type: **01.23 28 11**

External dimensions: **230 x 280 x 110 mm**

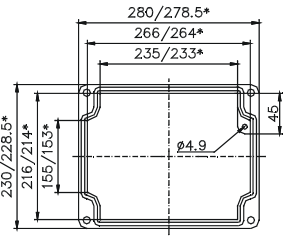
Weight: **2970 g**

DIN rail length in mm	max. fitting length in mm	Earthing rail clamp	Mounting plate (thickness in mm)	External mounting brackets	External hinge* set	EMC version	Internal hinge* set	SWB / SBG / SBGL Corr.protection	Allen lid screws	Silicone lid seal	Sealable lid screws in steel	Turn bolt fastener on request	Quick lock
TS 35													
264	240	16	1.5	•	•	•	•	•	•	•	•	•	•

Maximum number of cable glands *to DIN 50262\**

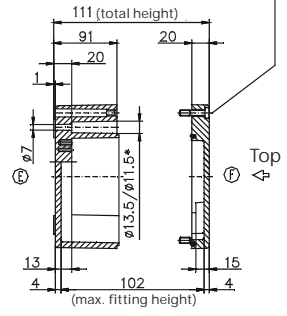
M	Corner dim.	Side		PG	Corner dim.	Side	
		A	C			B	D
12	17.25	70	45	7	17.25	68	45
16	25.30	32	18	9	21.85	44	28
20	27.60	24	17	11	25.30	32	18
25	37.95	12	8	13.5	27.60	24	17
32	48.30	9	5	16	31.05	21	12
40	60.95	4	3	21	37.95	12	8
50	69.00	3	2	29	48.30	9	4
63	74.75	3	2	36	60.95	4	3
				42	69.00	3	2
				48	74.75	3	2

Lid

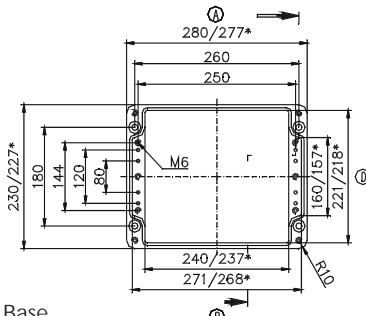


\* = Conical form tapering downwards  
Free dimensions-tolerance to GTA 13/5 DIN 1688

Cylinder screw M6x25/10 similar to DIN 84



Base



\* Please quote mounting side

Type: **01.23 33 11**

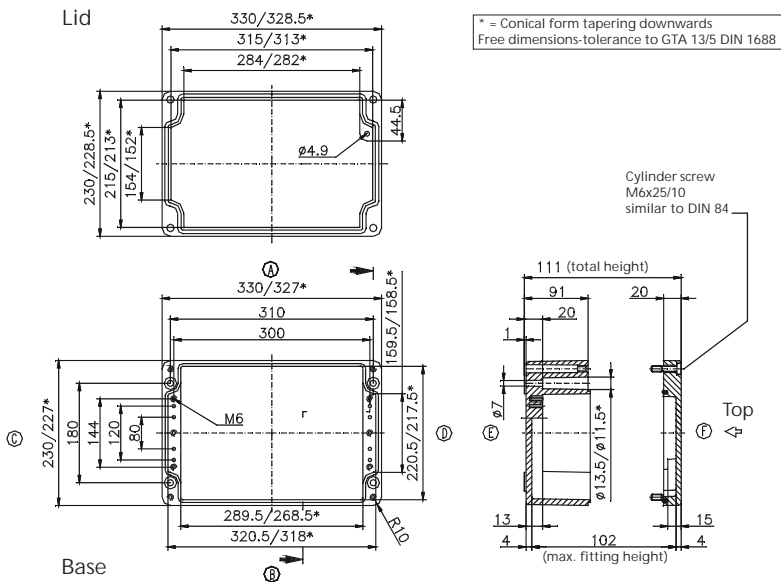
External dimensions: **230 x 330 x 110 mm**

Weight: **3370 g**

DIN rail length in mm	max. fitting length in mm	Earthing rail clamp	Mounting plate (thickness in mm)	External mounting brackets	External hinge* set	EMC version	Internal hinge* set	SWB / SBG / SBGL Corr.protection	Allen lid screws	Silicone lid seal	Sealable lid screws in steel	Turn bolt fastener on request	Quick lock
TS 35													
314	290	21	1.5	•	•	•	•	•	•	•	•	•	•

Maximum number of cable glands *to DIN 50262\**

M	Corner dim.	Side		PG	Corner dim.	Side		
		A/B	C/D			A/B	C/D	
12	17.25	84	45	7	17.25	81	45	
16	25.30	42	18	9	21.85	52	28	
20	27.60	30	17	11	25.30	38	18	
25	37.95	15	8	13.5	27.60	30	17	
32	48.30	11	5	16	31.05	27	12	
40	60.95	5	3	21	37.95	15	8	
50	69.00	4	2	29	48.30	11	4	
63	74.75	4	2	36	60.95	5	3	
					42	69.00	4	2
					48	74.75	4	2



Type: **01.23 33 18**

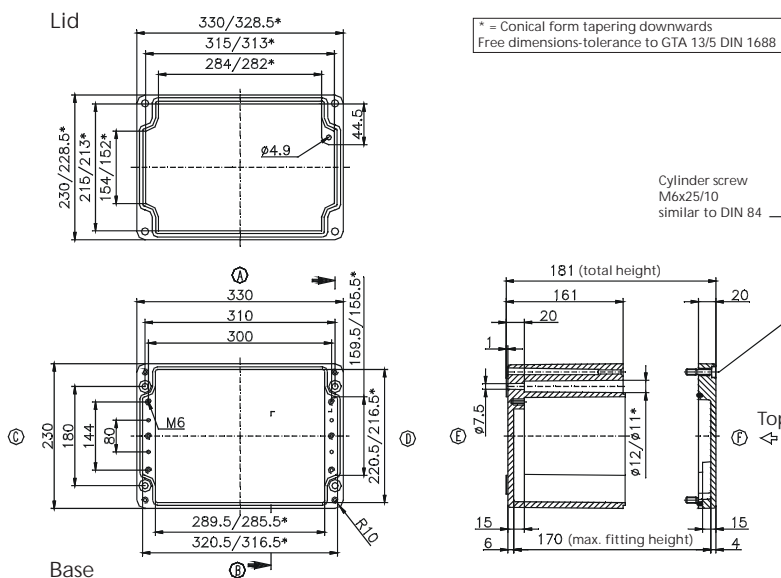
External dimensions: **230 x 330 x 180 mm**

Weight: **5240 g**

DIN rail length in mm	max. fitting length in mm	Earthing rail clamp	Mounting plate (thickness in mm)	External mounting brackets	External hinge* set	EMC version	Internal hinge* set	SWB / SBG / SBGL Corr.protection	Allen lid screws	Silicone lid seal	Sealable lid screws in steel	Turn bolt fastener on request	Quick lock
TS 35													
314	290	21	1.5	•	•	•	•	•	•	•	•	•	•

Maximum number of cable glands *to DIN 50262\**

M	Corner dim.	Side		PG	Corner dim.	Side		
		A/B	C/D			A/B	C/D	
12	17.25	165	81	7	17.25	144	81	
16	25.30	77	36	9	21.85	104	49	
20	27.60	60	33	11	25.30	77	36	
25	37.95	30	16	13.5	27.60	60	33	
32	48.30	18	9	16	31.05	45	25	
40	60.95	11	6	21	37.95	30	16	
50	69.00	8	5	29	48.30	18	9	
63	74.75	8	4	36	60.95	11	5	
					42	69.00	8	4
					48	74.75	8	4



\* Please quote mounting side

Type: **01.23 40 11**

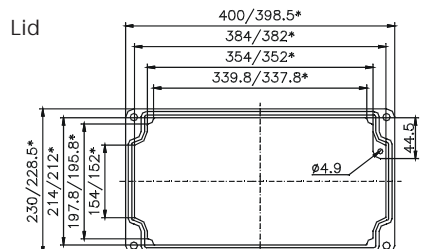
External dimensions: **230 x 400 x 110 mm**

Weight: **3820 g**

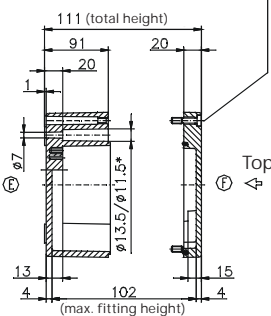
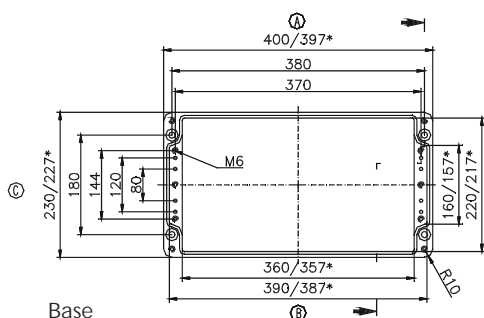
DIN rail length in mm	max. fitting length in mm	Earthing rail clamp	Mounting plate (thickness in mm)	External mounting brackets	External hinge* set	EMC version	Internal hinge* set	SWB / SBG / SBGL Corr.protection	Allen lid screws	Silicone lid seal	Sealable lid screws in steel	Turn bolt fastener on request	Quick lock
TS 35													
381	360	26	2	•	•	•	•	•	•	•	•	•	•

Maximum number of cable glands *to DIN 50262\**

M	Corner dim.	Side		PG	Corner dim.	Side	
		A/B	C/D			A/B	C/D
12	17.25	103	45	7	17.25	103	45
16	25.30	50	18	9	21.85	64	28
20	27.60	39	17	11	25.30	46	18
25	37.95	20	8	13.5	27.60	39	17
32	48.30	14	5	16	31.05	33	12
40	60.95	6	3	21	37.95	18	8
50	69.00	5	2	29	48.30	13	4
63	74.75	5	2	36	60.95	6	3
				42	69.00	5	2
				48	74.75	5	2



\* = Conical form tapering downwards  
Free dimensions-tolerance to GTA 13/5 DIN 1688



Type: **01.23 40 23**

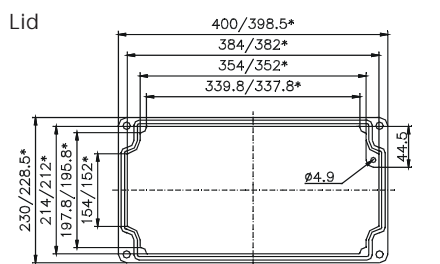
External dimensions: **230 x 400 x 225 mm**

Weight: **6820 g**

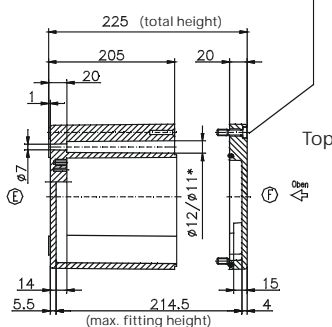
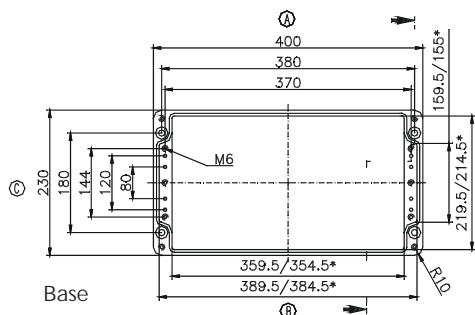
DIN rail length in mm	max. fitting length in mm	Earthing rail clamp	Mounting plate (thickness in mm)	External mounting brackets	External hinge* set	EMC version	Internal hinge* set	SWB / SBG / SBGL Corr.protection	Allen lid screws	Silicone lid seal	Sealable lid screws in steel	Turn bolt fastener on request	Quick lock
TS 35													
381	360	26	2	•	•	•	•	•	•	•	•	•	•

Maximum number of cable glands *to DIN 50262\**

M	Corner dim.	Side		PG	Corner dim.	Side	
		A/B	C/D			A/B	C/D
12	17.25	240	108	7	17.25	240	108
16	25.30	122	48	9	21.85	160	63
20	27.60	100	44	11	25.30	112	48
25	37.95	54	21	13.5	27.60	100	44
32	48.30	30	13	16	31.05	77	35
40	60.95	18	9	21	37.95	54	21
50	69.00	15	6	29	48.30	30	13
63	74.75	12	5	36	60.95	18	6
				42	69.00	15	6
				48	74.75	12	5



\* = Conical form tapering downwards  
Free dimensions-tolerance to GTA 13/5 DIN 1688



\* Please quote mounting side

Type: **01.23 60 11**

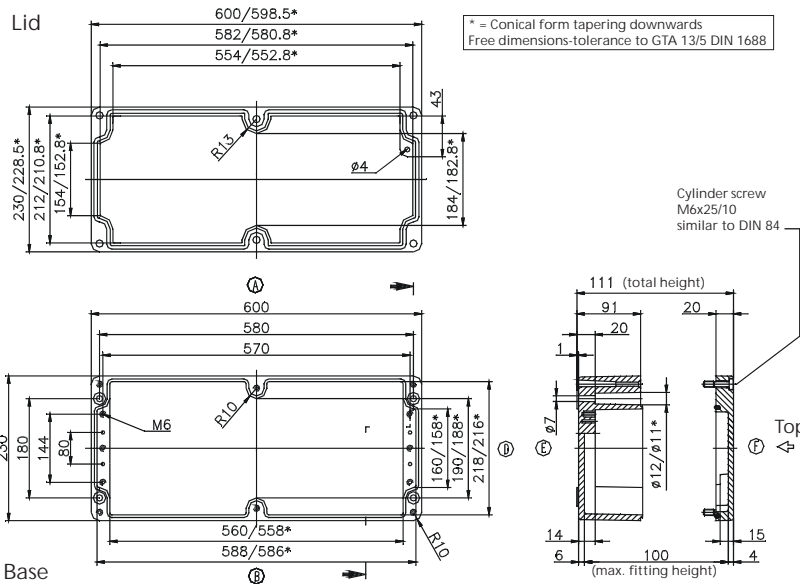
External dimensions: **230 x 600 x 110 mm**

Weight: **6930 g**

DIN rail length in mm	max. fitting length in mm	Earthing rail clamp	Mounting plate (thickness in mm)	External mounting brackets	External hinge* set	EMC version	Internal hinge* set	SWB / SBG / SBGL Corr.protection	Allen lid screws	Silicone lid seal	Sealable lid screws in steel	Turn bolt fastener on request	Quick lock
TS 35													
581	560	41	2	•	•	•	•	•	•	•	•	•	•

Maximum number of cable glands *to DIN 50262\**

M	Corner dim.	Side		PG	Corner dim.	Side	
		A	C			B	D
12	17.25	150	43	7	17.25	150	43
16	25.30	72	18	9	21.85	96	28
20	27.60	54	17	11	25.30	68	18
25	37.95	28	8	13.5	27.60	54	15
32	48.30	20	4	16	31.05	28	12
40	60.95	10	3	21	37.95	28	8
50	69.00	8	2	29	48.30	20	4
63	74.75	6	2	36	60.95	10	2
				42	69.00	8	2
				48	74.75	6	2



Type: **01.31 40 11**

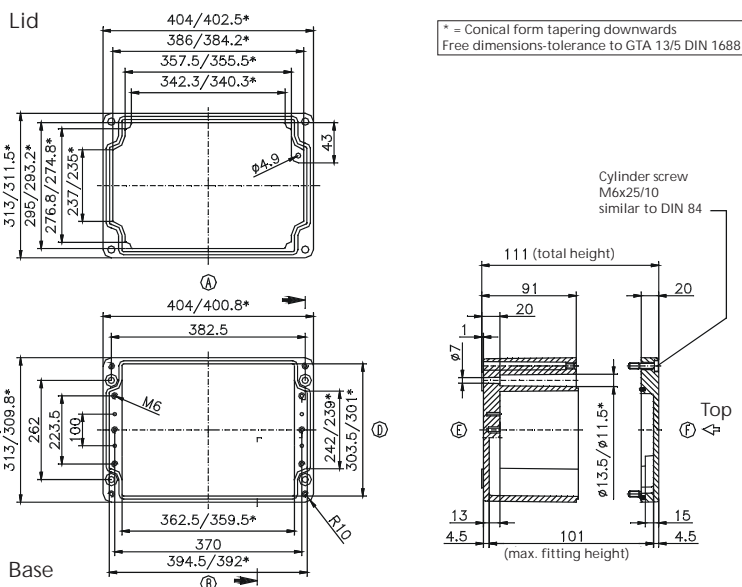
External dimensions: **310 x 400 x 110 mm**

Weight: **5280 g**

DIN rail length in mm	max. fitting length in mm	Earthing rail clamp	Mounting plate (thickness in mm)	External mounting brackets	External hinge* set	EMC version	Internal hinge* set	SWB / SBG / SBGL Corr.protection	Allen lid screws	Silicone lid seal	Sealable lid screws in steel	Turn bolt fastener on request	Quick lock
TS 35													
381	360	26	2	•	•	•	•	•	•	•	•	•	•

Maximum number of cable glands *to DIN 50262\**

M	Corner dim.	Side		PG	Corner dim.	Side	
		A	C			B	D
12	17.25	105	68	7	17.25	103	68
16	25.30	50	28	9	21.85	64	42
20	27.60	39	26	11	25.30	46	27
25	37.95	20	12	13.5	27.60	39	24
32	48.30	14	7	16	31.05	33	18
40	60.95	6	4	21	37.95	18	12
50	69.00	5	3	29	48.30	13	7
63	74.75	5	3	36	60.95	6	4
				42	69.00	5	3
				48	74.75	5	3



\* Please quote mounting side



Type: **01.31 40 14**

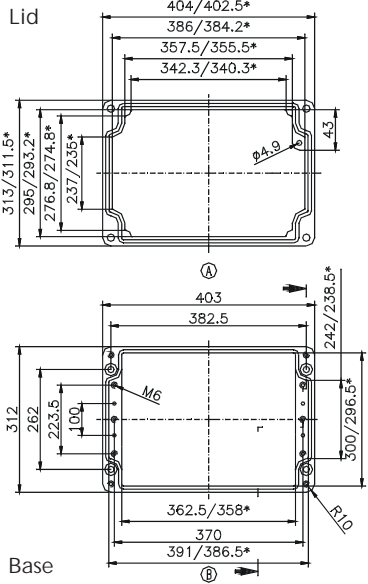
External dimensions: **310 x 400 x 140 mm**

Weight: **6700 g**

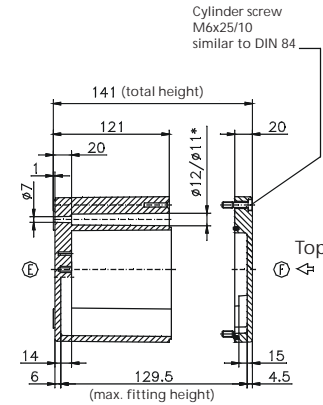
DIN rail length in mm	max. fitting length in mm	Earthing rail clamp	Mounting plate (thickness in mm)	External mounting brackets	External hinge* set	EMC version	Internal hinge* set	SWB / SBG / SBGL Corr.protection	Allen lid screws	Silicone lid seal	Sealable lid screws in steel	Turn bolt fastener on request	Quick lock
TS 35													
381	360	26	2	•	•	•	•	•	•	•	•	•	•

Maximum number of cable glands *to DIN 50262\**

M	Corner dim.	Side		PG	Corner dim.	Side		
		A	C			B	D	
12	17.25	147	95	7	17.25	147	95	
16	25.30	70	43	9	21.85	96	55	
20	27.60	55	32	11	25.30	70	40	
25	37.95	28	18	13.5	27.60	55	32	
32	48.30	17	10	16	31.05	44	28	
40	60.95	12	7	21	37.95	27	18	
50	69.00	7	4	29	48.30	17	10	
63	74.75	6	3	36	60.95	12	7	
					42	69,00	7	4
					48	74,75	6	3



\* = Conical form tapering downwards  
Free dimensions-tolerance to GTA 13/5 DIN 1688



Type: **01.31 40 18**

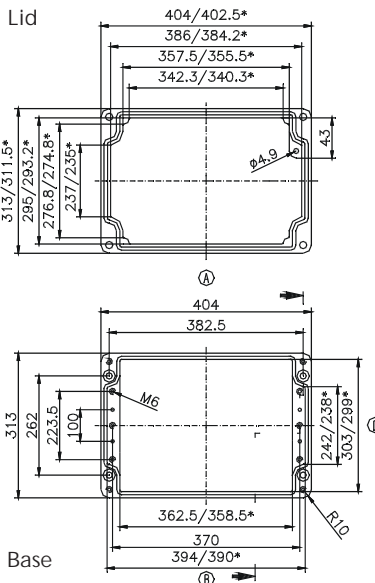
External dimensions: **310 x 400 x 180 mm**

Weight: **8460 g**

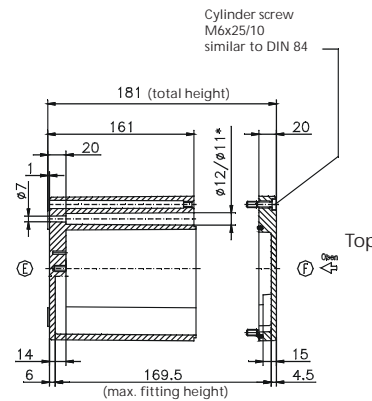
DIN rail length in mm	max. fitting length in mm	Earthing rail clamp	Mounting plate (thickness in mm)	External mounting brackets	External hinge* set	EMC version	Internal hinge* set	SWB / SBG / SBGL Corr.protection	Allen lid screws	Silicone lid seal	Sealable lid screws in steel	Turn bolt fastener on request	Quick lock
TS 35													
381	360	26	2	•	•	•	•	•	•	•	•	•	•

Maximum number of cable glands *to DIN 50262\**

M	Corner dim.	Side		PG	Corner dim.	Side		
		A	C			B	D	
12	17.25	205	122	7	17.25	205	122	
16	25.30	98	54	9	21.85	128	77	
20	27.60	78	51	11	25.30	98	54	
25	37.95	40	24	13.5	27.60	75	48	
32	48.30	22	15	16	31.05	60	38	
40	60.95	15	9	21	37.95	38	24	
50	69.00	11	6	29	48.30	22	15	
63	74.75	8	6	36	60.95	14	8	
					42	69,00	10	6
					48	74,75	10	6



\* = Conical form tapering downwards  
Free dimensions-tolerance to GTA 13/5 DIN 1688



\* Please quote mounting side

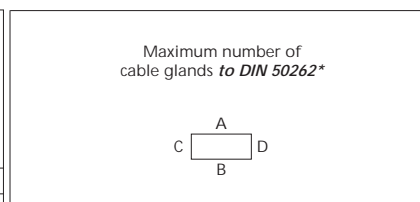


Type: **01.31 60 18**

External dimensions: **310 x 600 x 180 mm**

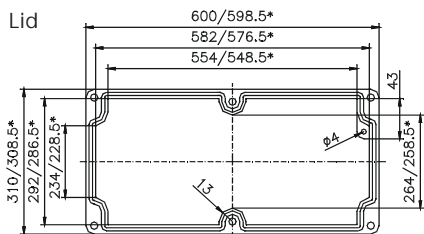
Weight: **11080 g**

DIN rail length in mm	max. fitting length in mm	Earthing rail clamp	Mounting plate (thickness in mm)	External mounting brackets	External hinge* set	EMC version	Internal hinge* set	SWB / SBG / SBGL Corr.protection	Allen lid screws	Silicone lid seal	Sealable lid screws in steel	Turn bolt fastener on request	Quick lock
TS 35													
581	560	41	2	•	•	•	•	•	•	•	•	•	•

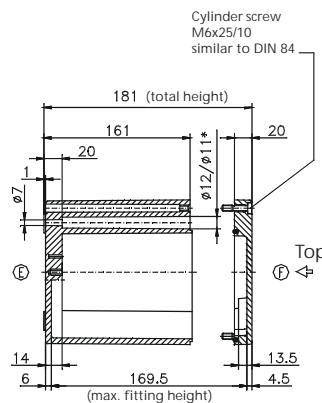
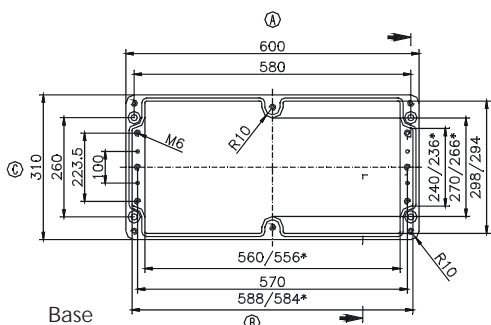


M	Cor-ner dim.	Side		PG	Cor-ner dim.	Side	
		A	C			A	C
12	17.25	150	68	7	17.25	150	68
16	25.30	76	28	9	21.85	96	42
20	27.60	60	24	11	25.30	72	27
25	37.95	30	12	13.5	27.60	60	24
32	48.30	20	7	16	31.05	48	18
40	60.95	10	4	21	37.95	28	12
50	69.00	8	3	29	48.30	20	6
63	74.75	6	3	36	60.95	10	4
				42	69.00	8	3
				48	74.75	6	3

Lid



\* = Conical form tapering downwards  
Free dimensions-tolerance to GTA 13/5 DIN 1688



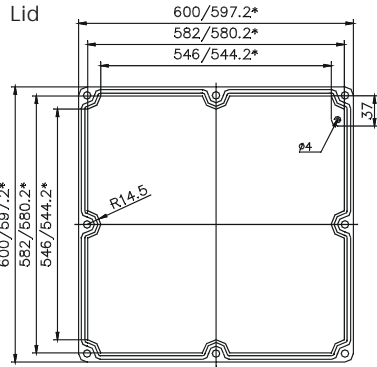
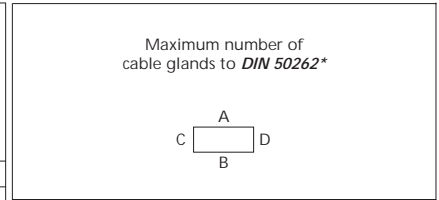
\* Please quote mounting side

Type: **01.60 60 20**

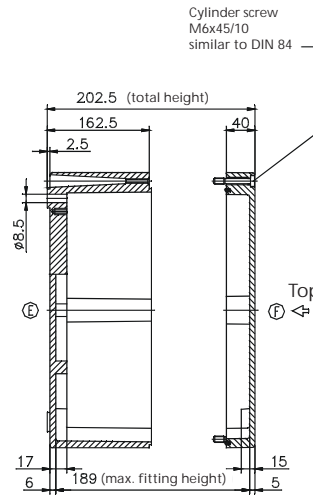
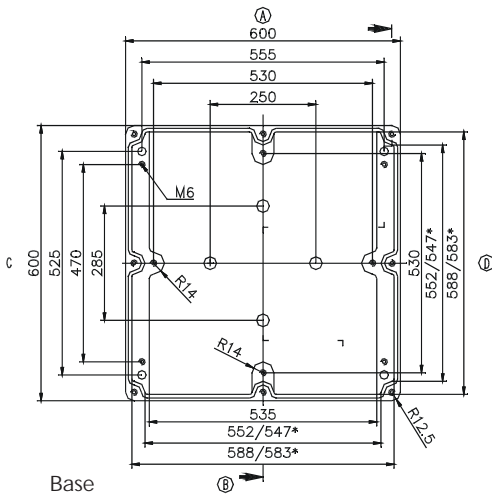
External dimensions: **600 x 600 x 200 mm**

Weight: **25940 g**

DIN rail length in mm	max. fitting length in mm	Earthing rail clamp	Mounting plate (thickness in mm)	External mounting brackets	External hinge* set	EMC version	Internal hinge* set	SWB / SBG / SBGL Corr. protection	Allen lid screws	Silicone lid seal	Sealable lid screws in steel	Turn bolt fastener on request	Quick lock
TS 35	552		2.5		•			•		•			



\* = Conical form tapering downwards  
Free dimensions-tolerance to GTA 13/5 DIN 1688



M	Corner dim.	Side		PG	Corner dim.	Side	
		A/B	C/D			A/B	C/D
12	17.25	270	270	7	17.25	270	270
16	25.30	140	140	9	21.85	184	184
20	27.60	108	108	11	25.30	134	134
25	37.95	56	56	13.5	27.60	108	108
32	48.30	32	32	16	31.05	84	84
40	60.95	22	22	21	37.95	56	56
50	69.00	16	16	29	48.30	32	32
63	74.75	12	12	36	60.95	18	18
				42	69.00	12	12
				48	74.75	12	12

\* Please quote mounting side